



Graphic display

Innovative display and control for UV disinfection systems

The most advanced control for UV systems

7-inch graphic display

The 7-inch display provides a customer-friendly interface and menu navigation that offers innovative control and monitoring options for a smooth user experience.

In addition to the large 7-inch TFT color display for clear presentation of all relevant system information, a tactile 5-button control pad allows error-free, simple operation even under difficult conditions such as moisture and dirt.

Examples of the numerous features include: dimming of UV lamps and fluence (dose) control. The AQUAFIDES 7-inch graphic display is available for the Compact and OptiLon series.



Dimming of the UV lamps

AQUAFIDES UV systems with the 7-inch graphic display allow for regulating the power of the UV lamps. If the disinfection requirement is reduced, the output of the UV lamps can be adjusted accordingly. This enables maximum efficient operation of the UV system with lower overall power consumption. Integrated thermal management keeps the UV lamps in the optimum operating window and extends their service life.

UV dose (fluence) display and control

With the UV dose display, you always have the actual disinfection performance of your UV system in view, so you can ensure the standards and application-specific disinfection levels (i.e., 400 J/m²). The innovative dose control, in combination with the power control of the UV lamps (dimming), allows you to precisely adjust the lamp power to the required UV dose and make extremely economical operation possible.

Extensive control and monitoring options

Numerous inputs and outputs of the control panel ensure excellent connectivity of your AQUAFIDES UV system. In addition to the various device-specific operating parameters (i.e., UV sensor value of the device radiometer), many device-external signals such as flow rate or temperature can be processed.



“AQUAFIDES’ decades of experience developing UV disinfection systems can be seen in every detail of the 7-inch graphic display.”

Friedrich Stadler,
Head of R&D, AQUAFIDES



A clearly structured menu navigation to support operators with help texts and explanations directly on the display

User-friendly interface and a 7-inch TFT display for clarity and intuitive operation

Tactile control pad with haptic feedback to ensure flawless operation even in demanding environments (moisture and dirt)

Static and dynamic dimming of the UV lamps for maximum efficiency and economical, resource-saving operation of your system

Extensive control and monitoring functions including innovative UV dose control of UV disinfection systems

Intelligent wiper control: Various control modes for UV disinfection systems equipped with the HybridWiper®

Remote maintenance and connectivity via Modbus/TCP (IP)

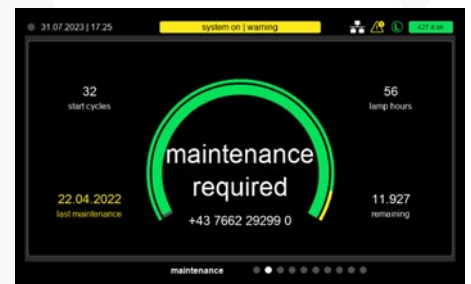
Information at a glance: All essential system parameters, such as sensor data, trend values, lamp hours, flow rate, and much more, on a single screen

Integrated maintenance management: Continuous recording of maintenance intervals, lamp hours, historical sensor data, and much more

Sophisticated authorization system: Activation of setting options depending on user qualification and area of responsibility



Accessibility of essential functions such as switching the system on or off with just one click on the control pad

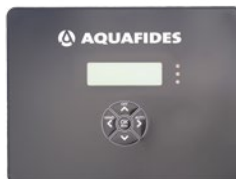


Complete transparency and tracking of maintenance-critical factors such as lamp hours, start cycles, and maintenance intervals

Function comparison

UV disinfection control panel

You can choose between two different control panels for our disinfection systems. Both have the same dimensions, and the hardware components are backward compatible.



4-line display



7-inch TFT display

Standard control	4-line display	7-inch TFT display
Compact series	●	○
OptiLon series	-	●
Basic functions and connectivity		
Sensor signal (Output 4-20mA)	●	●
Flow meter (Input 4-20mA)	●	●
Remote ON/OFF (Input IO)	●	●
Alarm sensor (Output IO)	●	●
Pre-alarm sensor (Output IO)	●	●
Interval flushing (Output IO)	●	●
Lamp fault (Output IO)	●	●
Sum error (Output IO)	●	●
Operating error (Output IO)	●	●
Temperature irradiation chamber	○	●
Relais module	○	○
Wiper Control (only OptiLon)	-	○
Modbus TCP/IP	-	○
PROFINET	-	○
Dimming and dose pacing		
Static dimming	-	●
Dynamic dimming	-	○
OptiBoost (only OptiLon)	-	○
Dose pacing	-	○
Monitoring and data logging		
Alert	●	●
Alert logging	-	●
Digital instructions	-	●
Operating hours	●	●
On-off counter	●	●
Service contact view	-	●
Data logging	○	●
Temperature	○ Reactor ● Ballast	○ Reactor ● Ballast ● Cabinet
Trend view	-	●
Power measurement	-	○
Input/output overview	-	●
Multisensor view	-	●
Ballast view	-	●

● Included ○ Optional - Not included

About AQUAFIDES

AQUAFIDES – an affiliate of Trojan Technologies – designs, manufactures, and supports UV water treatment systems that meet the stringent requirements for drinking water. Decades of water treatment experience coupled with a strong focus on innovation ensure our systems are reliable, easy to operate, and efficient. Driven by an unwavering commitment to customer satisfaction, our team provides expert advice on UV treatment, comprehensive service and maintenance, and prompt delivery of spare parts. Our high-quality, fit-for-purpose systems and customer-friendly service enable municipal customers to address contaminants and meet their water quality objectives reliably and effectively. Learn more at AQUAFIDES.com.



To learn more about the brands and affiliates of Trojan Technologies, visit www.trojantechnologies.com