

PRODUCT BULLETIN

ISSUE/DATE:	January 2026	BULLETIN NUMBER:	26-PB-IC-OPTIVENN NEW LAMP CABLE ASSEMBLY
TOPIC:	OPTIVENN NEW LAMP CABLE ASSEMBLY	PRODUCT LINE:	System OptiVenn™

OVERVIEW

The Aquafine OptiVenn system currently utilizes a shielded, three-conductor lamp cable with wire colors Red, Yellow, and White, rated for 600V and 105°C.

This bulletin serves to announce upcoming changes to the lamp cable specifications, including conductor count, wire color, current and voltage ratings. These updates will be reflected in Operations & Maintenance (O&M) Manuals.

TIMING

The new lamp cables will be introduced gradually during Q1 2026, as existing inventory of the current cables is depleted.

DETAILS

The new lamp cable assembly features a shielded two-conductor design with wires colored Brown and White, rated for 300V and 80°C.

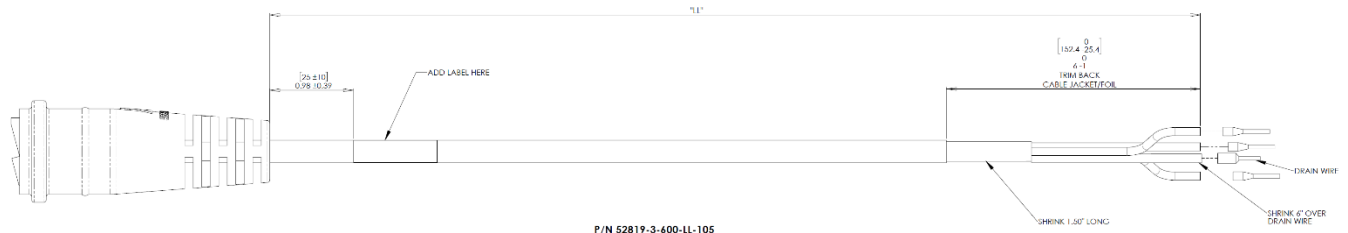


Figure 1 - Current lamp cable assembly 52819-3-600-LL-105

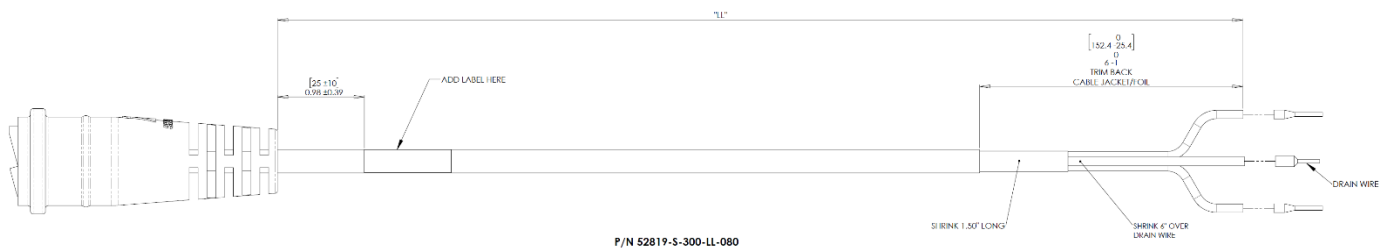


Figure 2 - New lamp cable assembly 52819-S-300-LL-080

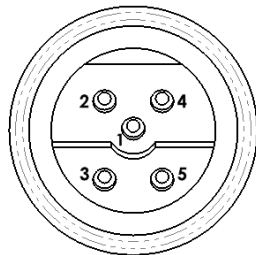


TABLE 1		
WIRE COLOR	CABLE TYPE	
	3 CONDUCTOR	2 CONDUCTOR
	PIN NO.	PIN NO.
RED	1	N/A
YELLOW	2	N/A
WHITE	3	3
BROWN	N/A	2
GRAY	N/A	N/A
CLEAR	DRAIN	DRAIN

Figure 3 - Pin layout and conductor color legend for old 3 Conductor and new 2 Conductor lamp cables

SAFETY

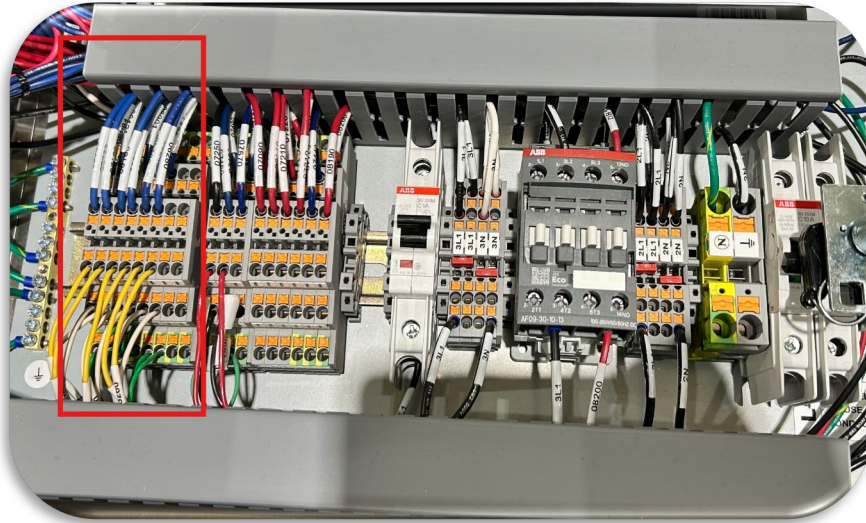
We remind you that only adequately trained and qualified individuals should operate, repair or maintain your Aquafine equipment.

When performing maintenance on any reactor, be sure to follow all applicable safety practices such as wearing personal protective equipment, locking out and tagging sources of energy and depressurizing vessels before performing any service, always consult the equipment O&M manual before beginning work, when UV chambers are pressurized, never cross in front of the lamp end plate as an added precaution. Failure to follow these instructions could result in serious bodily injury or death.

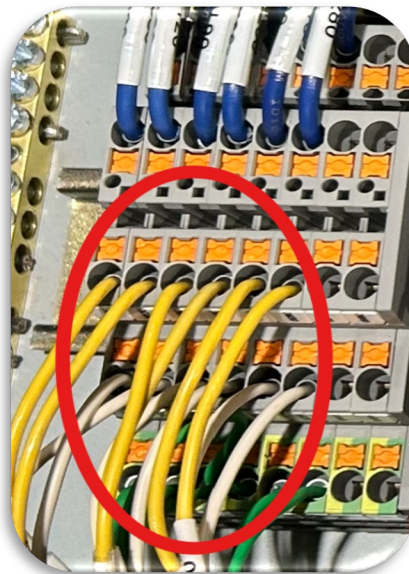
COMPATIBILITY AND REPLACEMENT INSTRUCTIONS

The new lamp cable is fully backward compatible and can be used as a replacement in existing systems. To install, follow these steps to remove the current three-conductor lamp cable and replace it with the new two-conductor version.

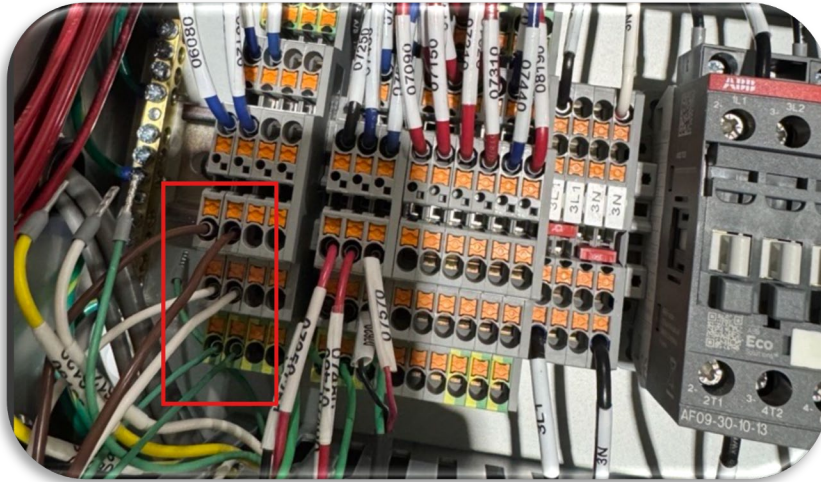
1. Identify the location of the lamp cable terminal blocks within the panel.



2. Disconnect the Yellow, White, and Drain wires of the existing lamp cable from the backplate terminal blocks.



3. Remove the opposite end of the lamp cable from the lamp connection.
4. Once the old cable has been completely removed, install the new lamp cable as illustrated below.



5. Connect the other end of the lamp cable to lamp pins.
6. Repeat steps from 1-4, if additional cables need to be replaced.

ASSISTANCE

If you require technical assistance or have any questions regarding this bulletin, please contact the Technical Assistance Center: tac@trojanuv.com or call 1-866-388-0488. Outside of North America please call 01-519-457-2318