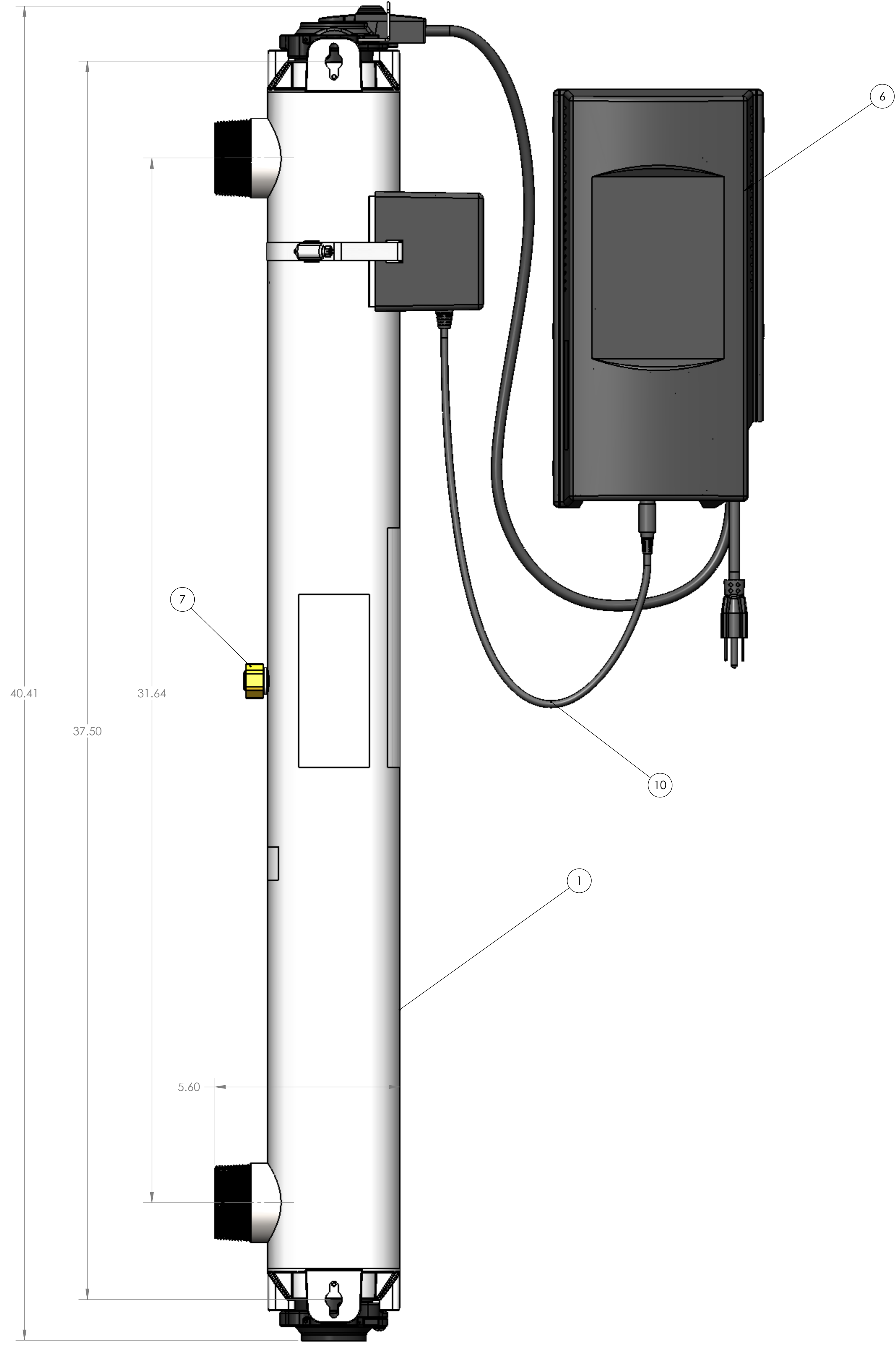
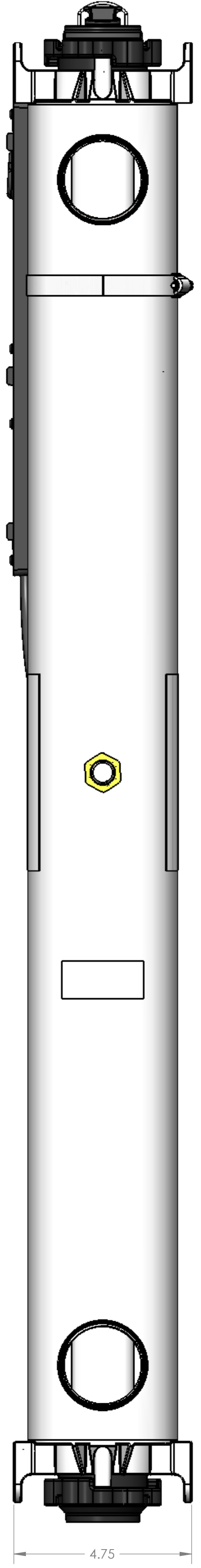


REV	SHT	ZONE	REVISION DESCRIPTION	LOG NO.	REV BY	CHK BY	APPD BY	DATE
B	2	C6	SENSOR 015458-001 REPLACED BY NEW SENSOR 270281-R	14-R052	AMB	CC	DJ	2014-09-15



PART NUMBER	DESCRIPTION	ITEM 6 PART NUMBER
660001-R	UVMAX K 120V 2" MNPT	660018-R
660002-R	UVMAX K+ 120V 2" MNPT	660019-R
660003-R	UVMAX PRO 50 120V 2" MNPT	660020-R
660004-R	UVMAX K 230V 2" MNPT	660018-R
660005-R	UVMAX K+ 230V 2" MNPT	660019-R
660006-R	UVMAX PRO 50 230V 2" MNPT	660020-R

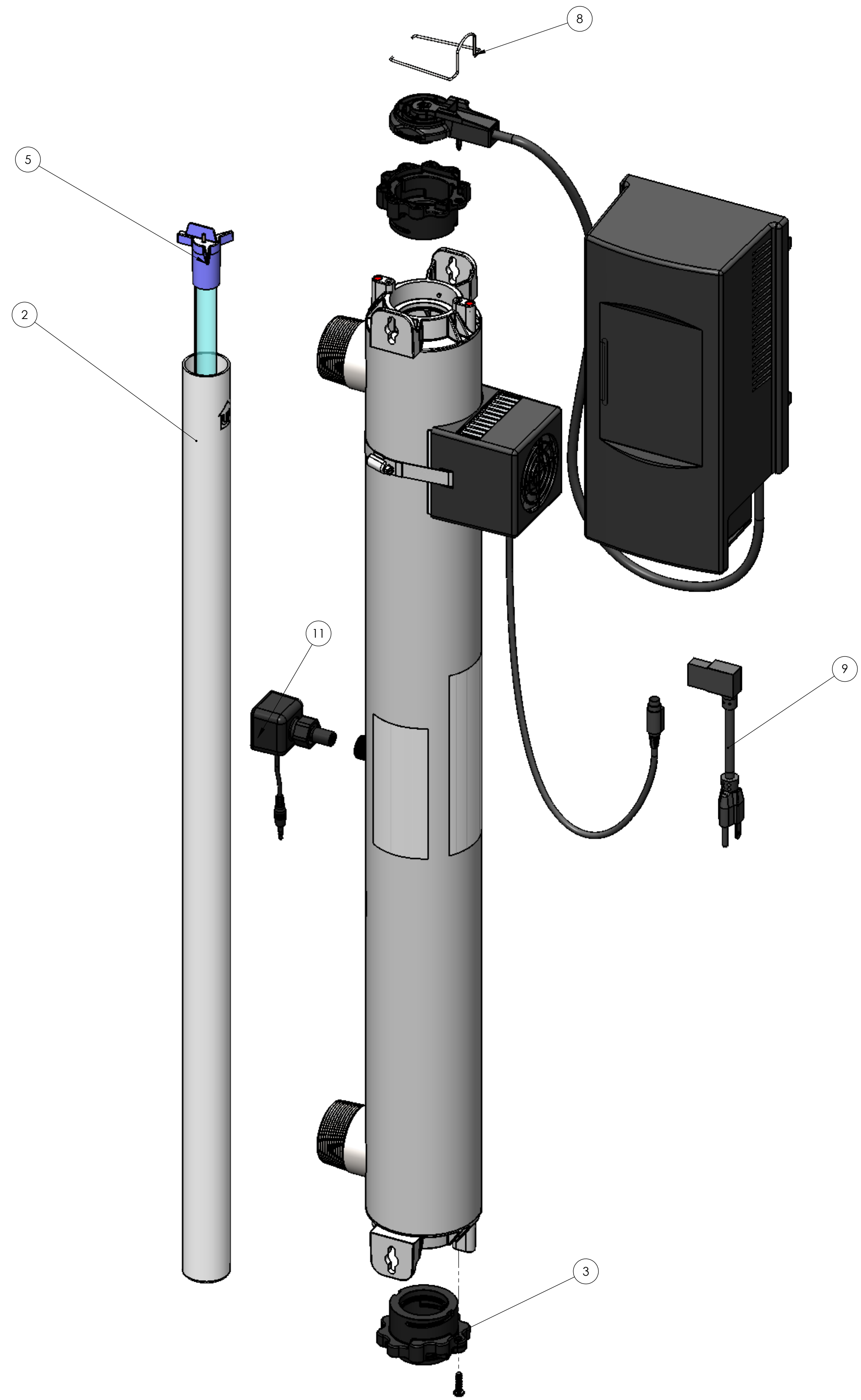
ITEM NO	ITEM DESCRIPTION	DRAWING NO.	660001-R	660002-R	660003-R	660004-R	660005-R	660006-R
11	SENSOR ASSY, PRO	270281RG	-	1	1	-	1	1
10	COOLTOUCH KIT, UVMAX GEN2	650568	1	1	1	1	1	1
9	CORD, POWER 120V 90DEG	602636	1	1	1	-	-	-
9	CORD, POWER 230V 90DEG	602637	-	-	-	1	1	1
8	WIREFORM, HARNESS UVMAX GEN2	602896	1	1	1	1	1	1
7	PLUG KIT, SENSOR PORT UVMAX	650566	1	-	-	1	-	-
6	POWER SUPPLY, UVMAX G2 RS	SEE CHART	1	1	1	1	1	1
5	LAMP, REPL UVMAX J/PRO30 PKGD	602850G	1	1	1	1	1	1
4	BOLT, SLEEVE UVMAX GEN 2	602916	1	1	1	1	1	1
3	SLEEVE BOLT ASSY, UVMAX G2 RS	603053	1	1	1	1	1	1
2	SLV, REPL UVMAX J/PRO 30 PKGD	602910G	1	1	1	1	1	1
1	CHAMBER WLDT, 2" NPT LC	660013-R	1	1	1	1	1	1

**UNLESS OTHERWISE SPECIFIED:**  
 DO NOT SCALE DRAWING  
 INTERPRET DIMENSIONS AND TOLERANCES PER ASME Y14.5M-1994  
 DIMENSIONS ARE IN INCHES  
 TOLERANCES APPLY AS SHOWN BELOW:  
 2 PL DEC + 0.01  
 3 PL DEC + 0.005  
 ANGLE ± 0.3°  
 REMOVE ALL BURRS. ALL CORNERS R.0.010" OR BREAK EDGE. CRITICAL CHARACTERISTIC

**CONFIDENTIALITY NOTICE**  
 COPYRIGHT 2009 BY TROJAN TECHNOLOGIES. ALL RIGHTS RESERVED. NO PART OF THIS DOCUMENT MAY BE REPRODUCED, STORED IN A RETRIEVAL SYSTEM, OR TRANSMITTED IN ANY FORM, WITHOUT THE WRITTEN PERMISSION OF TROJAN TECHNOLOGIES.  
 SolidWorks MAINTAINED DATA. CHANGES SHALL BE INCORPORATED ELECTRONICALLY.

**VIQUA**  
 A TROJAN TECHNOLOGIES COMPANY  
 425 CLAIR ROAD WEST, GUELPH, ONTARIO, CANADA, N1L-1R1  
 DESCRIPTION: UVMAX LIGHT COMMERCIAL SERIES

DWG NO. 660001RG  
 MASS: 21.77 lbs  
 SCALE 1:12  
 SHEET 1 OF 2  
 SIZE D



<p><b>UNLESS OTHERWISE SPECIFIED:</b> DO NOT SCALE DRAWING INTERPRET DIMENSIONS AND TOLERANCES PER ASME Y14.5M-1994 DIMENSIONS ARE IN INCHES TOLERANCES APPLY AS SHOWN BELOW: 2 PL DEC + 0.01 3 PL DEC + 0.005 ANGLE ± 0.3° REMOVE ALL BURRS. ALL CORNERS R.0010" OR BREAK EDGE. CRITICAL CHARACTERISTIC</p>	<p><b>CONFIDENTIALITY NOTICE</b> COPYRIGHT 2009 BY TROJAN TECHNOLOGIES. ALL RIGHTS RESERVED. NO PART OF THIS DOCUMENT MAY BE REPRODUCED, STORED IN A RETRIEVAL SYSTEM, OR TRANSMITTED IN ANY FORM, WITHOUT THE WRITTEN PERMISSION OF TROJAN TECHNOLOGIES. <b>SolidWorks</b> MAINTAINED DATA CHANGES SHALL BE INCORPORATED ELECTRONICALLY</p>	<p><b>VIQUA™</b> A TROJAN TECHNOLOGIES COMPANY 425 CLAIR ROAD WEST, GUELPH, ONTARIO, CANADA, N1L-1R1</p>	
		<p>DESCRIPTION: UVMAX LIGHT COMMERCIAL SERIES</p>	
<p>DRAWN BY: _____ CREATED ON: _____ RELEASE LOG # 09-R047</p>	<p>DWG NO. 660001RG MASS: 21.77 lbs SCALE 1:12 SHEET 2 OF 2</p>	<p>REV B</p>	<p>SIZE D</p>