

See Your Data. Trust Your Data.

Mobile Sensor Management (MSM) ensures confidence in your water quality analysis.



Device ID	Location	Last Reading	Value	Unit
00000000000000000000000000000000	PHOSPHATE SC 100	14:16 15 September 2019	0.07	mg/L
11400000000000000000000000000000	AN 100 sc	13:40 13 August 2019	2.18	mg/L
10000000000000000000000000000000	SCUMPER sc	13:45 12 August 2019	4.42	mg/L
11000000000000000000000000000000	Lineart LDO - LDO sc	13:48 13 August 2019	90	mg/L
11000000000000000000000000000000	110000 - RTMEMU plus sc	13:45 13 August 2019	ND	sc

Device ID	Location	Last Reading	Value	Unit
AB#1 DO - LDO sc		10:51 21 September 2020	74.22	°F
			10.68	mg/L
Filter Gallery - TU5300 sc		10:51 21 September 2020	0.633	TRB NTU
			0.00	Flow L/min
1748123 - sc4200c			2	Sensors
			1	Relay

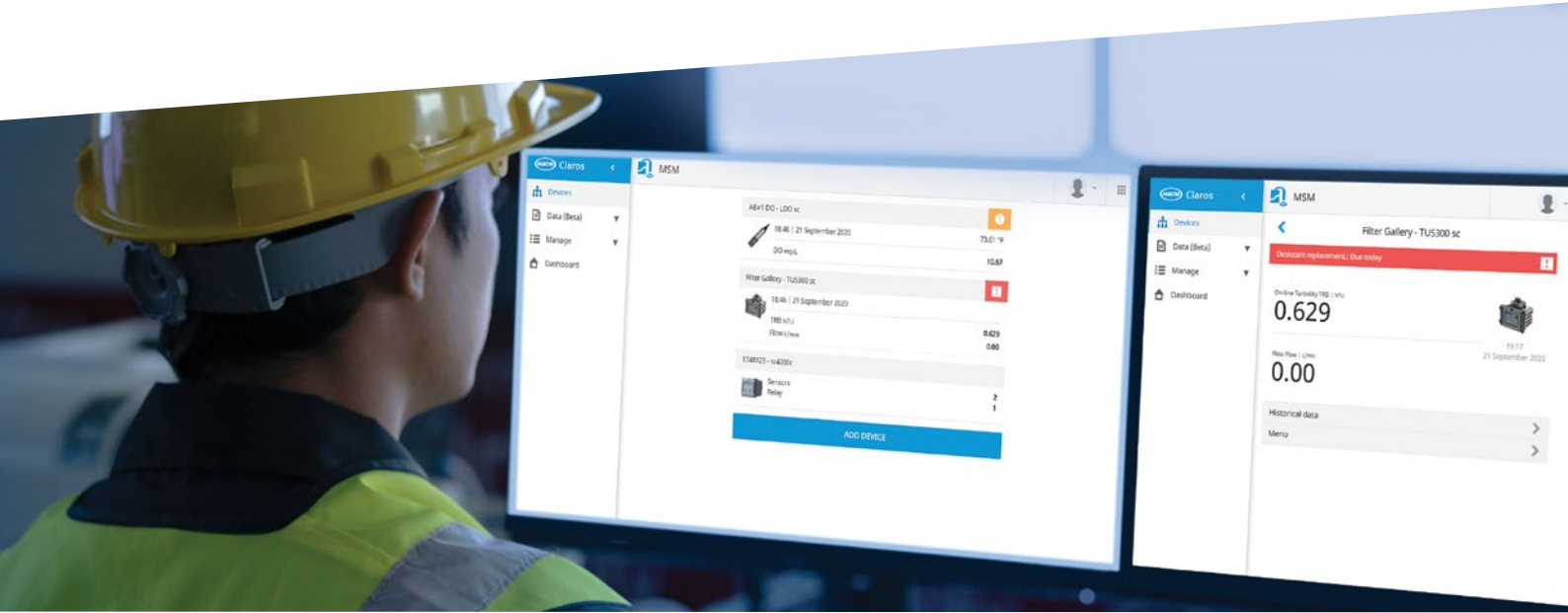


Be Right™



Mobile Sensor Management (MSM)

With remote access to your data – anytime, anywhere – and mobile software guiding your instrument maintenance, MSM removes blind spots and prevents inaccurate information.



Remote Data Visibility

- Access from any connected device

Real-time View of Instrument Health

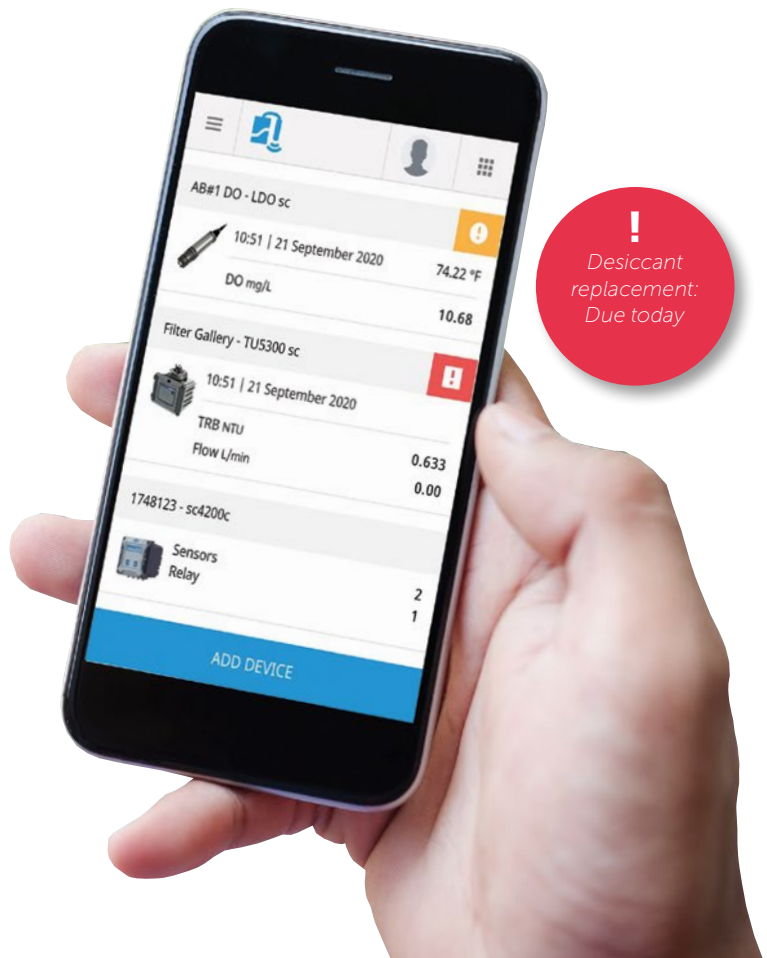
- Verify measurement accuracy
- Instrument malfunction alerts
- Proactive maintenance notifications
 - Reduce instrument downtime or missing data

Maintenance Instructions in the Palm of Your Hand

- Step-by-step instructions on any mobile device
 - No User Manuals needed
- Trigger maintenance activities remotely

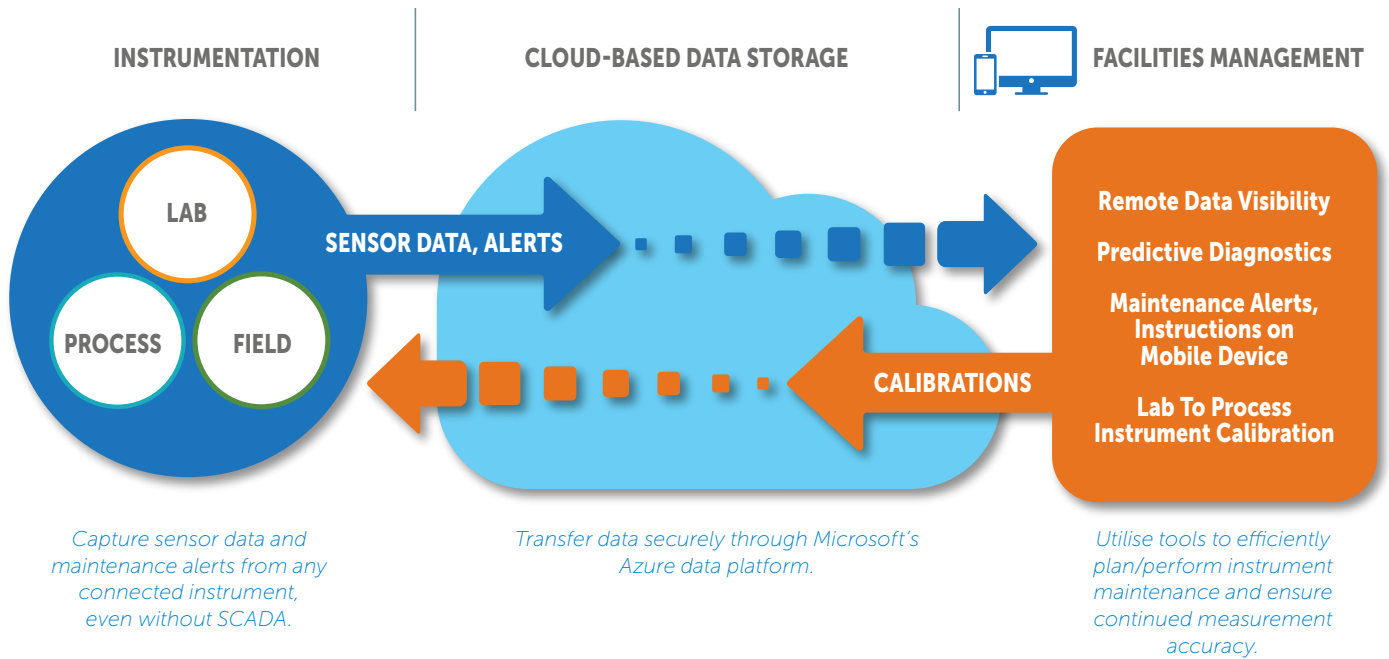
Safe and Secure Access

- Hosted through Microsoft Azure
- Multi-layered security
- Periodic scans & penetration tests
- Confidentiality with encryption

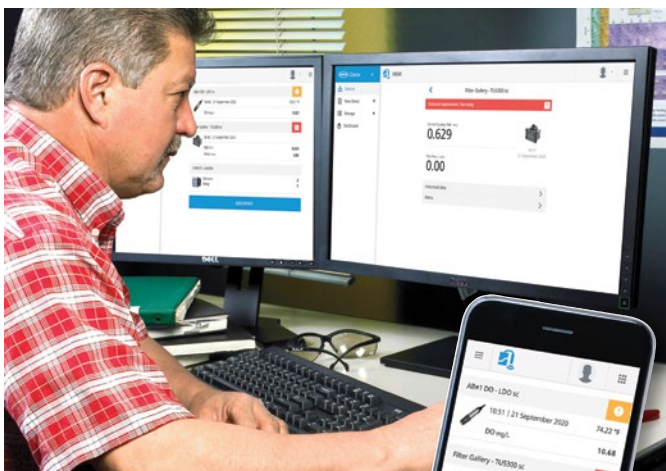


Overview

Mobile Sensor Management (MSM) is a web-based software solution that provides remote visibility to and maintenance guidance for your instrumentation. It allows you to focus on your highest priorities and ensure accurate data from well-maintained analysis equipment.

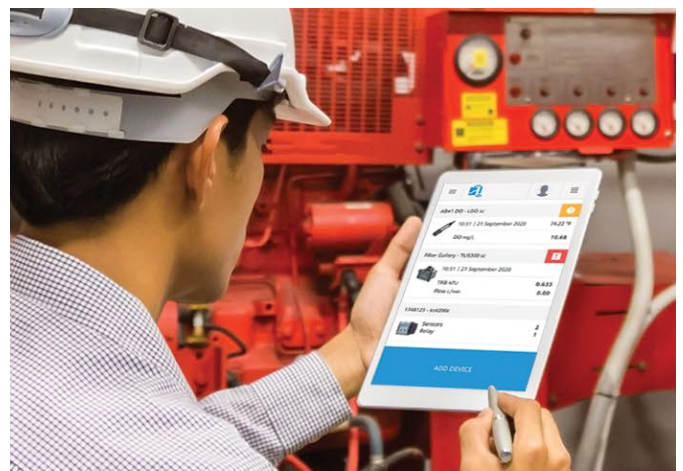


Key Functionalities



Remote Visibility

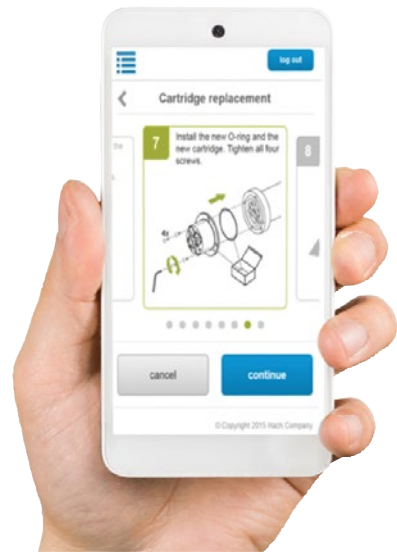
Provides remote access to instrument readings and alerts – anywhere, any time, and on any connected device.



Device Viewer

See the status of all your instrumentation in one easy-to-read list.

Key Functionalities



Alerts

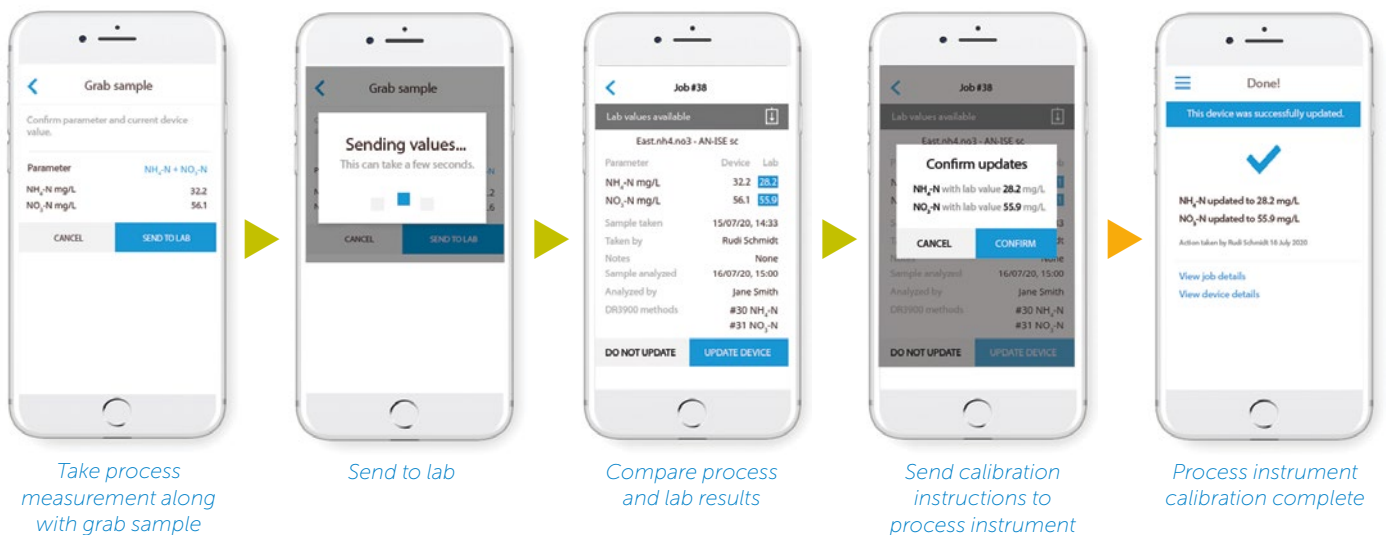
Receive alerts for critical needs and reminders to help proactively plan maintenance to ensure continual instrument update and data accuracy.

Maintenance Instructions

Ensure maintenance is performed correctly with step-by-step instructions on any mobile device.

Instrument Calibrations

Verify process instrument measurements versus lab reference values and calibrate remotely.



MSM-Compatible Controllers

Mobile Sensor Management is enabled by internet-connected controllers that deliver measurement and instrument data from your compatible Hach sensors and analysers to the Claros software platform. Several controller options are available to provide the appropriate configuration for your operations.



SC4500 Digital Controller

- 2 sensors
- 4G/3G(GSM/CDMA), Wi-Fi, LAN
- Profibus DP, Modbus TCP/IP, EtherNet/IP, Profinet, 4-20mA
- 5 mA outputs



SC1500 Controller

- 2, 4, or 6 sensors
- 4G/3G(GSM/CDMA), Wi-Fi, LAN
- Profibus DP, Modbus TCP/IP, 4-20mA
- 4, 8, or 12 mA outputs

Connect via Existing Instrumentation

The Claros Connector allows you to easily connect existing SC200 and SC1000 Universal Controllers to the Claros platform, thus giving you access to Mobile Sensor Management.*



Claros Connector with SC200 Controller (Claros Connector comes in SC4200c housing box)

- 2 sensors
- 4G/3G (GSM), Wi-Fi, LAN
- Edge device only; Communication, Outputs, and Display located on attached SC200 Controller



Claros Connector with SC1000 Controller (Claros Connector comes in SC4200c housing box)

- 2, 4, or 6 sensors
- 4G/3G (GSM), Wi-Fi, LAN
- Edge device only; Communication, Outputs, and Display located on attached SC1000 Controller

*Mobile Sensor Management (MSM) requires a subscription to utilise the software. Full MSM functionality via the Claros Connector will be available in mid-2021.

MSM-Compatible Analysis Instrumentation

Parameter	MSM-Compatible Instrument	Application Industries								Other Industries
		Municipal Drinking Water	Municipal Wastewater	Industrial Water	Food and Beverage	Power	Pulp and Paper			
Ammonia, Ammonium	Amtax sc Analyser ■●	✓	✓	✓	✓		✓			Oil & Gas (Upstream)
Ammonium	A-ISE sc Sensor ■●		✓				✓			
Ammonium, Nitrate	AN-ISE sc Sensor ■●		✓				✓			
Chlorine (Amperometric)	9184sc Analyser	✓	✓	✓				✓		
Chlorine (Colorimetric)	CL17sc Analyser ■●	✓		✓	✓		✓	✓		Field Use, Oil & Gas (Upstream), Pharmaceutical, Semiconductor
Chlorine (Colorimetric)	CL17 Ultra Low Range (ULR) ■●			✓						
Chlorine (Amperometric)	CL10sc Analyser	✓		✓	✓		✓	✓		Oil & Gas (Upstream)
Chlorine Dioxide	9187sc Analyser	✓		✓			✓	✓		Oil & Gas (Upstream)
Conductivity (Contacting)	3400sc Sensor	✓		✓			✓	✓		Oil & Gas (Upstream)
Conductivity (Inductive)	3700sc Sensor	✓		✓			✓			Chemical, Clean Water, Metal & Mining, Oil & Gas (Upstream), Steam Systems, Surface Water
Conductivity (Inductive)	3798sc Sensor	✓	✓	✓						Surface Water
Dissolved Oxygen	LDO 2 sc Sensor ■●	✓	✓	✓	✓		✓	✓		Oil & Gas (Upstream)
Nitrate (Ion Selective Electrode)	N-ISE sc Sensor ■●		✓				✓	✓		
Nitrate (Optical, UV Absorption Technology)	Nitratex clear sc Probe ■	✓		✓			✓	✓		Environmental
Nitrate (Optical, UV Absorption Technology)	Nitratex eco sc Probe ■	✓	✓	✓			✓			Environmental
Nitrate (Optical, UV Absorption Technology)	Nitratex plus sc Probe ■	✓	✓	✓			✓	✓		Environmental

■ Available with Predictive Diagnostic Software (Prognosis)

● Available with Mobile Maintenance Instructions



Be Right™

Continued on next page.

MSM-Compatible Analysis Instrumentation

Parameter	MSM-Compatible Instrument	Application Industries								Other Industries
		Municipal Drinking Water	Municipal Wastewater	Industrial Water	Food and Beverage	Power	Pulp and Paper	Oil & Gas (Upstream)		
Organic Constituents	UVAS sc Sensor	✓	✓	✓	✓	✓	✓	✓	✓	Oil & Gas (Upstream)
Ortho-Phosphate	Phosphax sc Analyser ■ ●	✓	✓		✓		✓		✓	
Ortho-Phosphate	Phosphax sc Low-Range Analyser ■	✓	✓	✓	✓		✓		✓	
Ozone (Amperometric)	9185sc Sensor	✓		✓				✓		
pH, ORP/Redox (High Purity)	8362sc Sensor			✓			✓		✓	
pH, ORP/Redox	pHD Sensor	✓		✓			✓		✓	
pH, ORP/Redox	1200-S sc Sensor		✓	✓			✓			
Sludge Level	Sonatax sc Sensor		✓	✓			✓		✓	
Suspended Solids (High Range)	Solitax hs-line sc Probe ■ ●		✓	✓			✓		✓	
Suspended Solids (Turbidity)	Solitax high-line sc Sensor ■ ●	✓	✓	✓			✓		✓	
Suspended Solids (Turbidity)	Solitax in-line sc Sensor ■ ●	✓	✓	✓			✓		✓	
Suspended Solids (Turbidity)	Solitax ts-line sc Sensor ■ ●	✓	✓	✓			✓		✓	
Suspended Solids (Turbidity)	TSS sc Sensor	✓	✓	✓			✓		✓	Environmental, Pure Water
Turbidity (High Range)	SS7sc (Surface Scatter 7sc) Turbidimeter			✓			✓		✓	
Turbidity	Solitax t-line sc Sensor ■ ●	✓	✓				✓		✓	
Turbidity	TU5300/5400 Turbidimeters ■	✓	✓				✓		✓	Pharmaceutical

■ Available with Predictive Diagnostic Software (Prognosis)

● Available with Mobile Maintenance Instructions

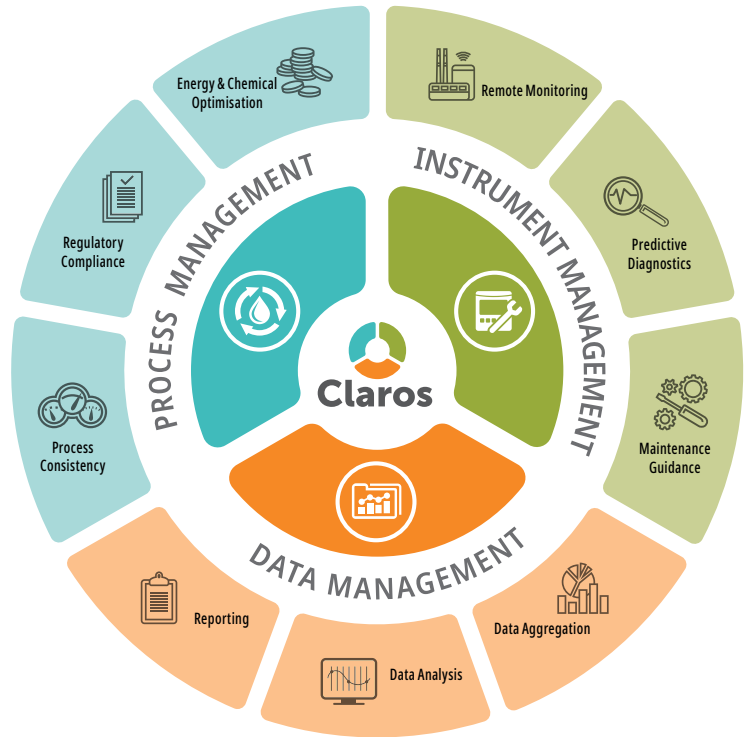


Be Right™



Mobile Sensor Management and RTC are part of Claros, the Water Intelligence System from Hach®. This suite of digital solutions helps water professionals with regulatory compliance, process optimisation, cost savings and remote operations. Whether it's instrument, data or process management, Claros solutions combine smart instrumentation with innovative software to eliminate uncertainty, reduce costs, and improve efficiency.

Learn more at:
hach.com/Claros



With Hach Service, you have a global partner who understands your needs and cares about delivering timely, high-quality service you can trust. Our service team brings unique expertise to help you maximise instrument uptime, ensure data integrity, maintain operational stability, and reduce compliance risk. Be confident with Hach Service.

Learn more at: hach.com/Service

To learn more about Mobile Sensor Management, contact your local Hach Representative or visit:

hach.com/Claros-Instrument-Management

DOC033.52.30668.Oct21



Be Right™