



Chlorine Analyzer Customer Guide

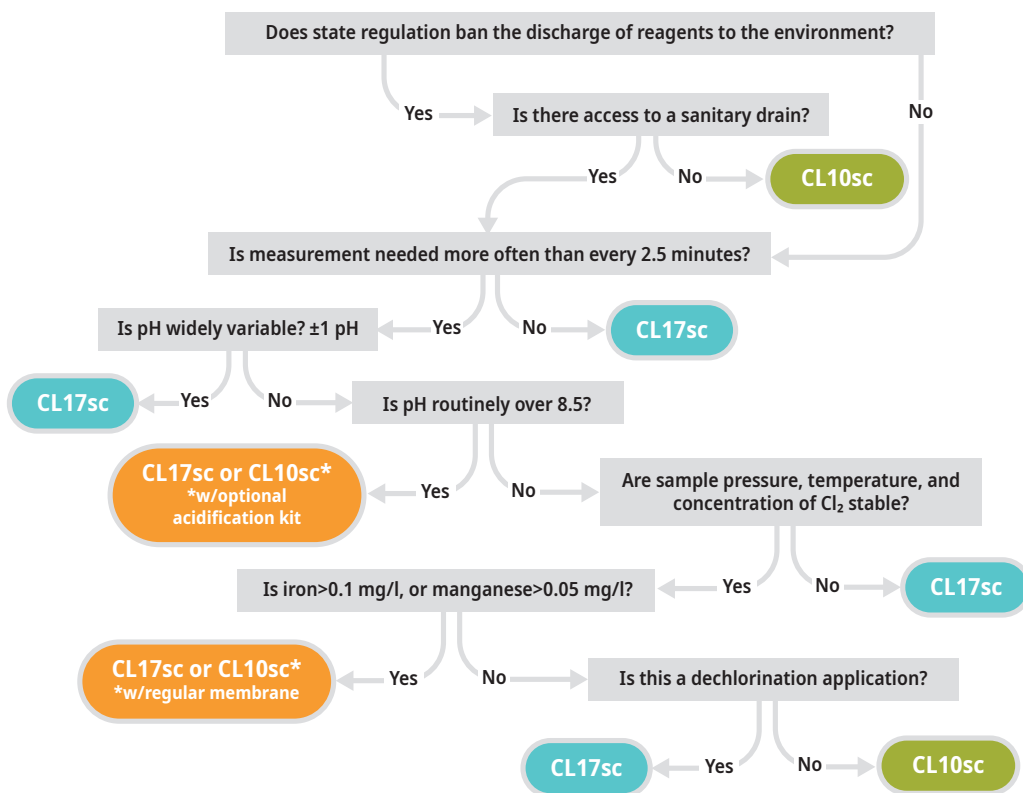
Chlorine Analyzer Selection Guide



CL17sc



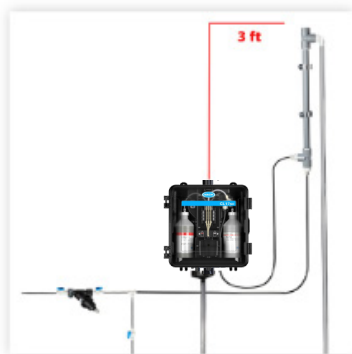
CL10sc



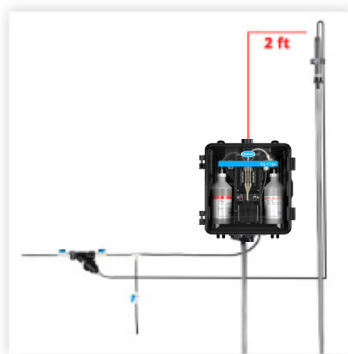
Be Aware	
Both CL17sc & CL10sc	Are specified for indoor installation
Both CL17sc & CL10sc	Require maintenance (Reagentless ≠ maintenance less)
Neither CL17sc & CL10sc	Are for hazardous locations

^1 ug/L Mn (VII) will react w/DPD to give ~ 3 ug/L (0.003 mg/L) Cl. Contact an ADM/SDM for application assistance.

Product Information and Part Numbers



CL17sc +
Modified Standpipe
8572300



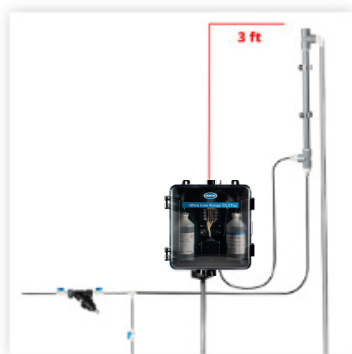
CL17sc +
Regular Standpipe
8572350



CL17sc +
Pressure Regulator
8572400



CL17sc + SC4500 +
Pressure Regulator Panel
SPMP-CL



ULR CL17sc +
Modified Standpipe
TBD



ULR CL17sc +
Regular Standpipe
9790200



ULR CL17sc +
Pressure Regulator
9790300



ULR CL17sc + SC4500 +
Pressure Regulator Panel
SPMP-ULRCL

Modified Standpipe kit: PN 8576001

Regular Standpipe kit: PN 8560500

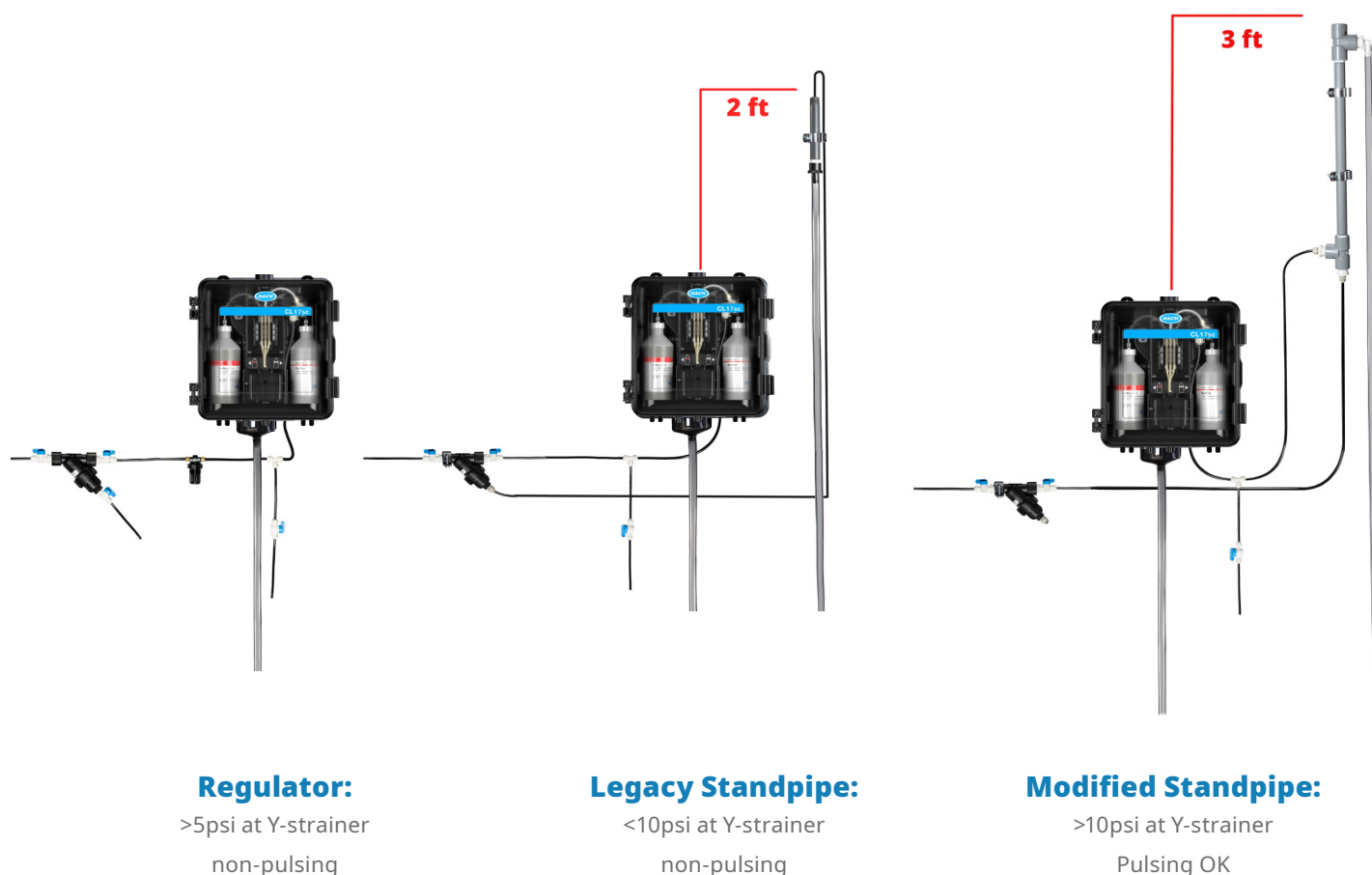
Pressure Regulator kit: PN 856570

*Free Modified standpipe upgrade if CL17sc sold before 3/31/2025

NOTE:

Flow rate of 120-200 mL/min through the analyzer (displayed on the controller) is recommended for best performance.

Sample Conditioning Kits: Summary



CL17sc will demonstrate best performance per customer expectations when:

- Analyzer is used in clean drinking water applications. If using analyzer in dirty water application, more sample filtration may be needed.
- Correct sample conditioning kit is chosen and installed per the user manual.
- Standpipe is mounted at sufficient head height above the analyzer per user manual.

Note:

If the Legacy Standpipe is used at >10psi and/or pulsing pressure, it may allow >5 psi sample pressure to the unit (water hammer conditions) creating a higher risk of leaks inside the analyzer.

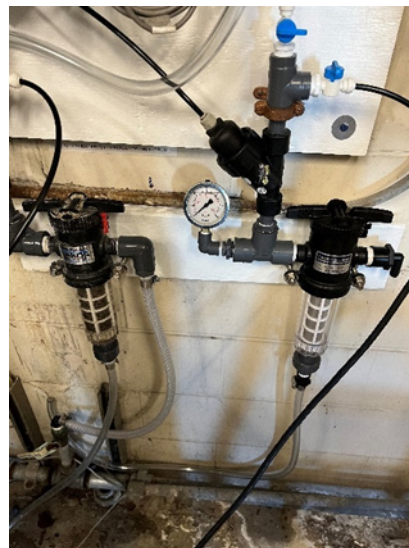
For dirty water applications make sure proper filtration is used. In some cases, flow meter may need to be bypassed (Consult ADM or SDM)

Not all samples are created equal!

Raw and Wastewater Filtration Options



HAYWARD 100µm CPVC SIMPLEX
BASKET STRAINER



Lakos 3/4" Model T2C-075 105µm
Twist Clean Filter



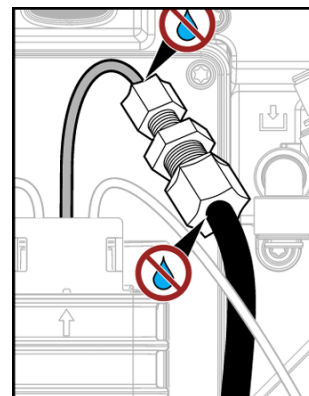
HACH FILTER, 100µm
Part #9623400
We sell this filter with
5500sc AMC!



Optional disc filter
element, Hach PN
9624500



ISPRING 100µm
Strainer WSB100P



**For wastewater applications
the flow meter may need to
be bypassed. Will require
1/4" to 1/8" union #013861*



World Headquarters: Loveland, Colorado USA | hach.com

United States 800-227-4224 fax: 970-669-2932 email: orders@hach.com
Outside United States 970-669-3050 fax: 970-461-3939 email: intl@hach.com

©Hach Company, 2025. All rights reserved.

In the interest of improving and updating its equipment, Hach Company reserves the right to alter specifications to equipment at any time.

DOC063.53.30873.Nov25