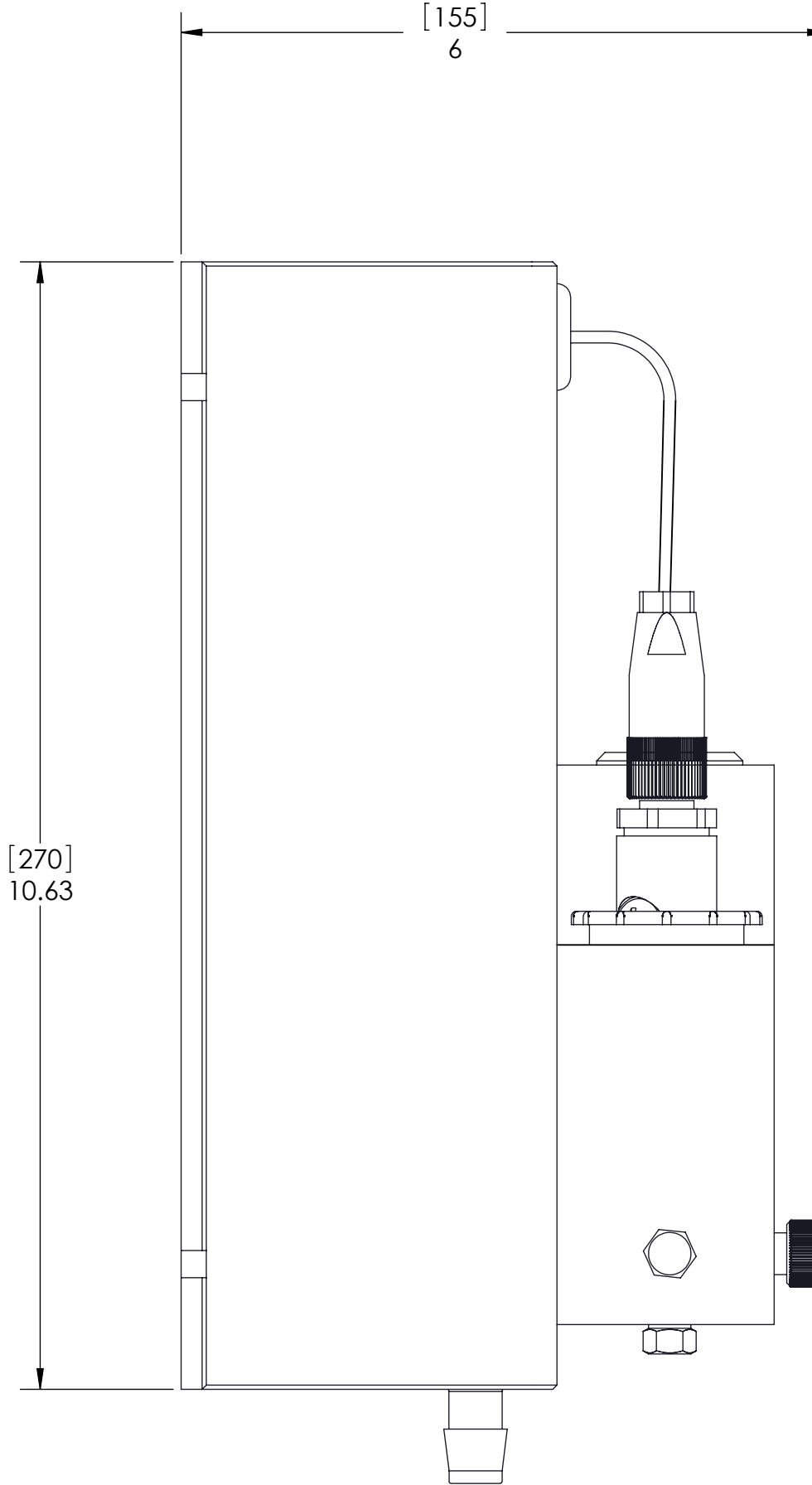
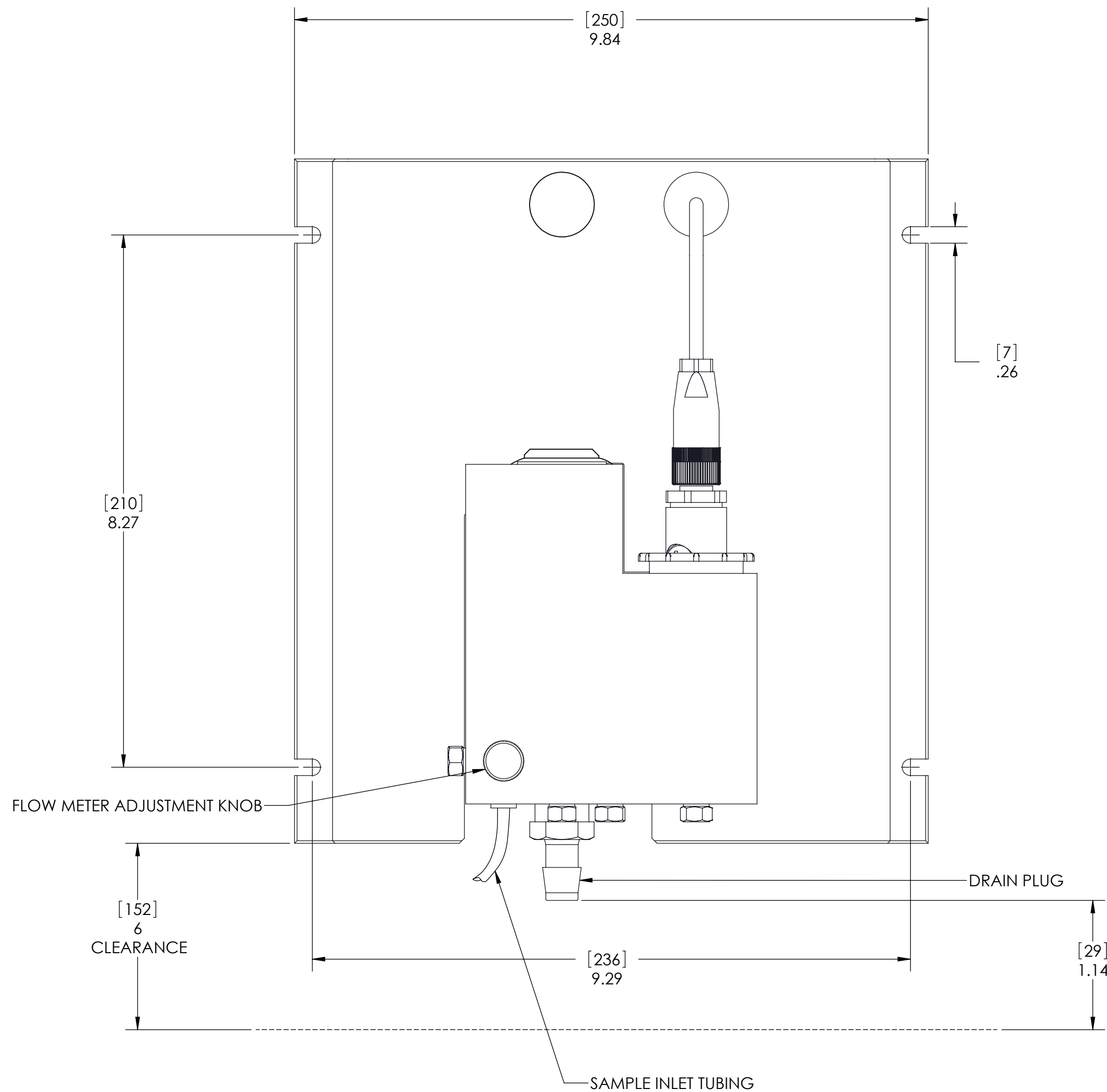


REVISION		
REV	DESCRIPTION	APPROVED
A	Production Release	Venkate Raman

NOTES:  
1. ALL DIMENSIONS ARE IN INCHES [MILLIMETERS].

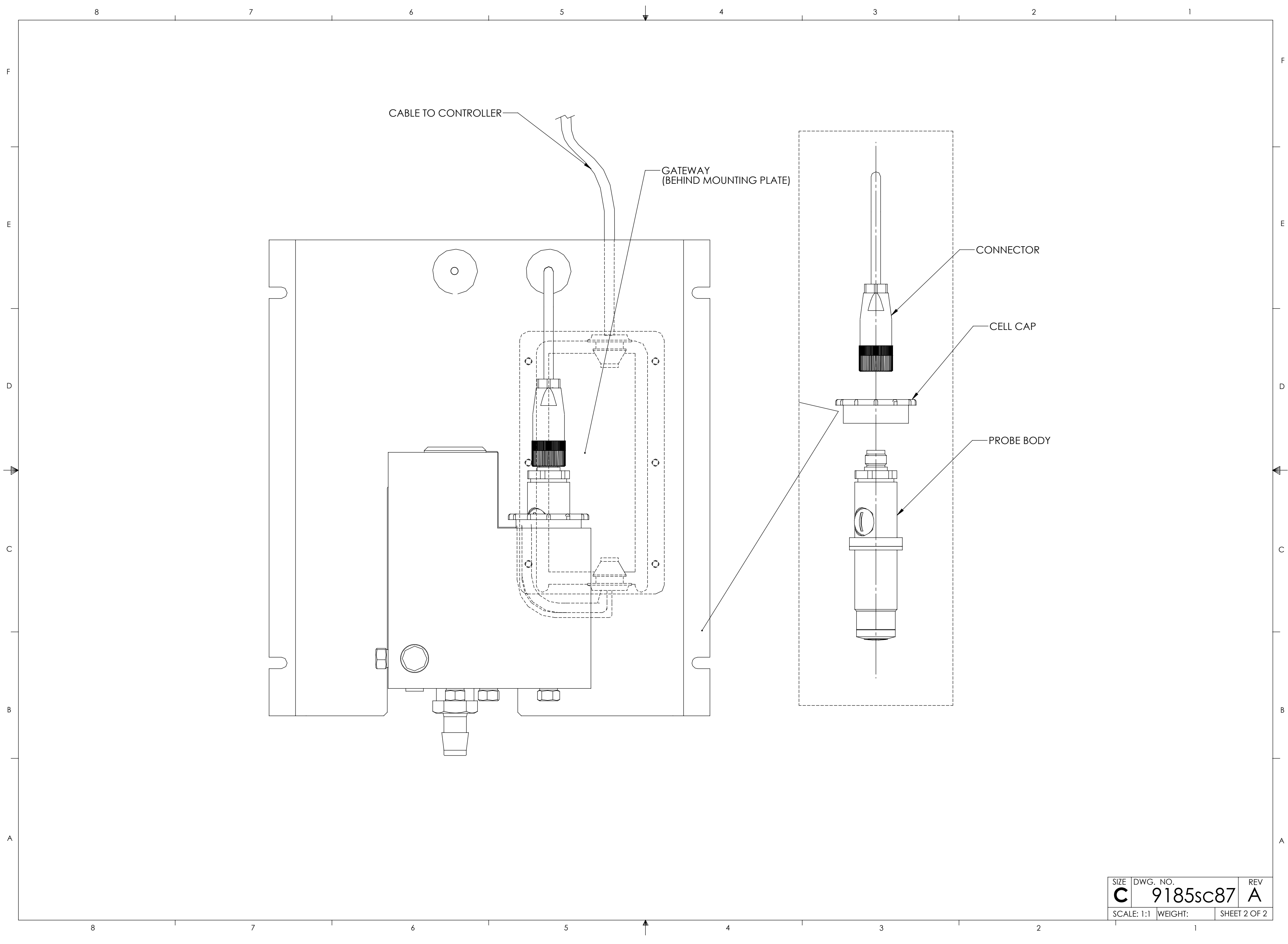


**GENERAL INFORMATION:**

- 9185sc ANALYZER IS DESIGNED FOR WALL MOUNTING, PANEL OR STAND.
- MEASUREMENT RANGE IS 0-2 PPM [0-2 mg/L] OZONE.
- DETECTION LIMIT IS 5 ppb (0.005 mg/L) OZONE.
- MINIMUM INLET PRESSURE TO INSTRUMENT TO BE 0.1 - 2 bar (1.4 - 28 psi)
- MINIMUM FLOW RATE TO BE 14 L/hr
- POWER CONSUMPTION IS 12V, 1.5 WATTS.
- WEIGHT OF ANALYZER IS 6.5 Kg (14.3 lb).

NOTICE-HACH COMPANY CLAIMS PROPRIETARY RIGHTS IN THE INFORMATION DISCLOSED ON THIS DRAWING. IT IS ISSUED IN CONFIDENCE FOR ENGINEERING INFORMATION ONLY AND MAY NOT, IN WHOLE OR IN PART, BE USED TO MANUFACTURE ANYTHING, WHETHER OR NOT SHOWN HEREON, REPRODUCED OR DISCLOSED TO ANYONE WITHOUT DIRECT PERMISSION FROM HACH COMPANY.

MATERIAL	UNLESS OTHERWISE SPECIFIED:	NAME	DATE	<b>HACH COMPANY</b> 5600 LINDBERGH DR. LOVELAND, CO. 80539
	DIMENSIONS ARE IN INCHES TOLERANCES: .X = ± .XX = ± .XXX = ± ANGLES = ±	DRAWN	TCS	
	INTERPRET GEOMETRIC TOLERANCING PER: ANSI Y14.5M 1994	ENGINEER	TCS	11/09/06
	DO NOT SCALE DRAWING	THIRD ANGLE PROJECTION		
				TITLE: <b>TRANSMITTAL, 9185sc OZONE ANALYZER</b>
		SIZE	DWG. NO.	REV
		<b>C</b>	<b>9185sc87</b>	<b>A</b>
		SCALE: 1:1	WEIGHT:	SHEET 1 OF 2



SIZE	DWG. NO.	REV
<b>C</b>	<b>9185sc87</b>	<b>A</b>
SCALE: 1:1	WEIGHT:	SHEET 2 OF 2