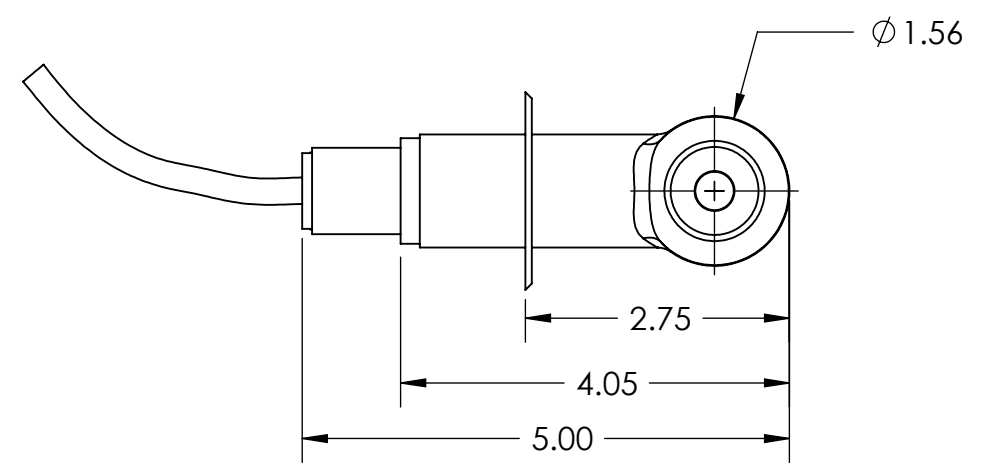
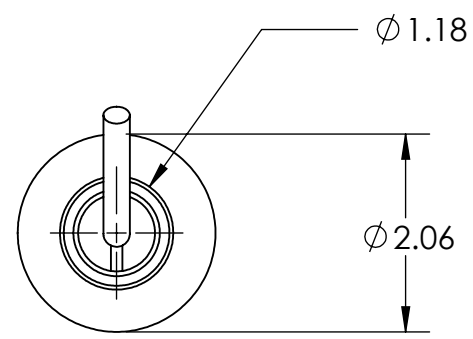
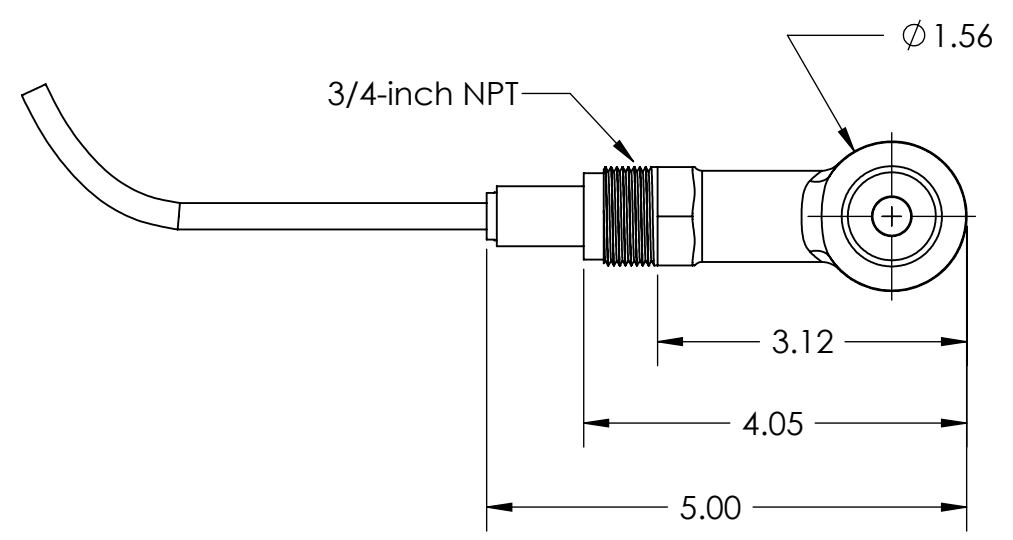
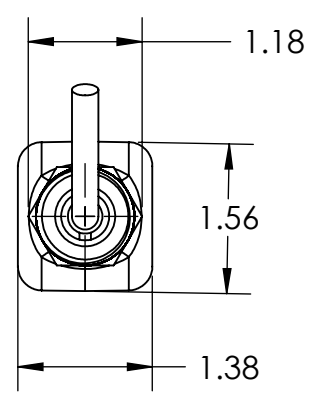


REVISION		
REV	DESCRIPTION	APPROVED
A	Production Release	John Scaffidi



SANITARY STYLE SENSOR



CONVERTIBLE STYLE SENSOR

Practical Measuring Range : 200 microSiemens/cm to 2,000,000 microSiemens/cm

Operating Temperature Range
 -10 to 200°C (14 to 392°F): Limited only sensor body material and mounting hardware: see below

Flow Rate
 3m (10 ft) per second, maximum

Temperature Compensator
 Pt 1000 RTD

Sensor Cable
 Polypropylene and PVDF Sensors:
 5 conductor (plus two isolated shields) cable with XLPE (Cross linked polyethylene) jacket; rated to 150°C (302°F); 6m (20ft.) long

Peek and PFA Teflon sensors:
 5 Conductor (plus two isolated shields) cable with Teflon coated jacket; rated to 200°C (392°F); 6m (20ft.) long

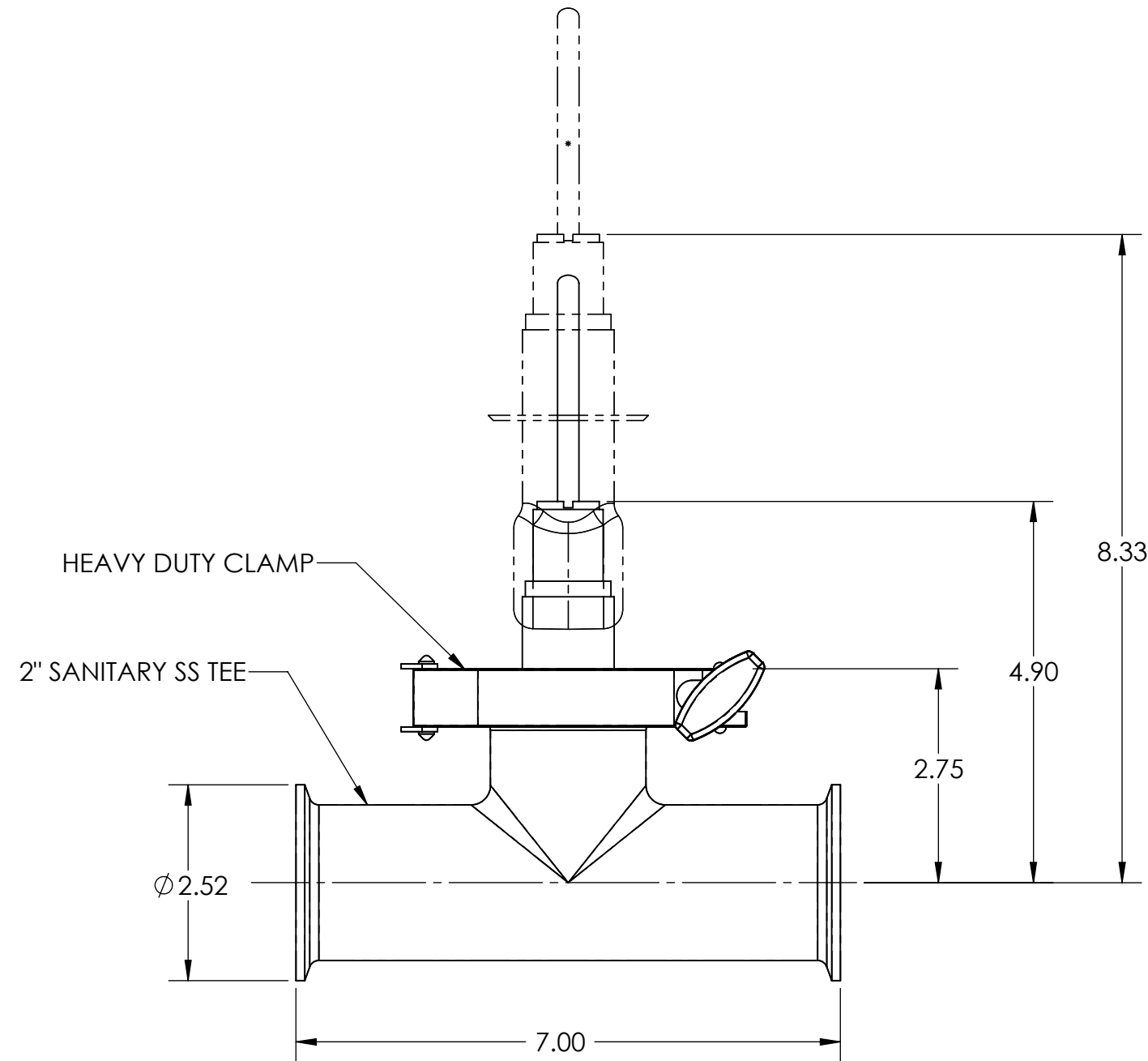
Product Type	Model No.	Type of Sensor	Hach sensor product number	Sensor Body Material	Body style	Mounting hardware	Hach product number
Inductive conductivity sensors	3700	Digital	D3705E2T	Polypropylene	Sanitary	Sanitary mount	MH018S8SZ (316SS)
			D3706E2T	PVDF			
			D3708E2T	PFA Teflon			
			D3725E2T	Polypropylene	Convertible	Union mount	MH518N3NZ (316SS)
			D3726E2T	PVDF			MH538N3NZ (CPVC)
			D3727E2T	PEEK			MH568N3NZ (PVDF)
		D3728E2T	PFA Teflon	Immersion mount	MH432G (CPVC Pipe)		
		D3728E2T	PFA Teflon		MH462G (PVDF Pipe)		
		Analog	3705E2T	Polypropylene	sanitary	Sanitary mount	MH018S8SZ (316SS)
			3706E2T	PVDF			
			3708E2T	PFA Teflon			
			3725E2T	Polypropylene	Convertible	Union mount	MH518N3NZ (316SS)
			3726E2T	PVDF			MH538N3NZ (CPVC)
			3727E2T	PEEK			MH568N3NZ (PVDF)
3728E2T	PFA Teflon		Immersion mount	MH432G (CPVC Pipe)			
3728E2T	PFA Teflon			MH462G (PVDF Pipe)			
		Insertion mount	MH138M9NZ (CPVC)				
			MH118M9NZ (316SS)				

NOTE:
 1. DIMENSIONS ARE IN INCHES

NOTICE--HACH COMPANY CLAIMS PROPRIETARY RIGHTS IN THE INFORMATION DISCLOSED ON THIS DRAWING. IT IS ISSUED IN CONFIDENCE FOR ENGINEERING INFORMATION ONLY AND MAY NOT, IN WHOLE OR IN PART, BE USED TO MANUFACTURE ANYTHING, WHETHER OR NOT SHOWN HEREON, REPRODUCED OR DISCLOSED TO ANYONE WITHOUT DIRECT PERMISSION FROM HACH COMPANY.

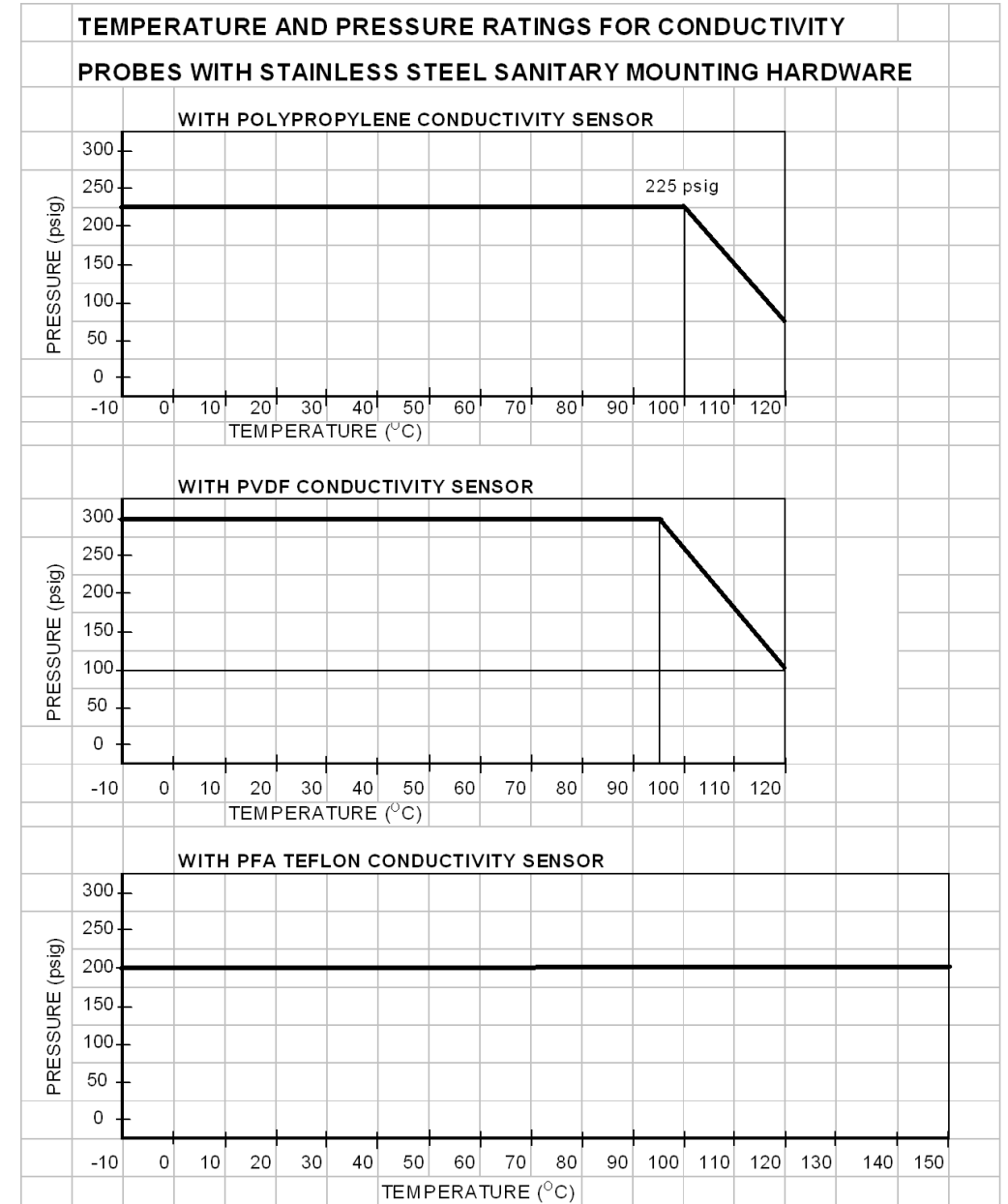
MATERIAL	UNLESS OTHERWISE SPECIFIED: DIMENSIONS ARE IN INCHES TOLERANCES: .X = ±.03 .XX = ±.01 .XXX = ±.005 ANGLES = ±.25°	NAME	DATE	HACH COMPANY 5600 LINDBERGH DR. LOVELAND, CO. 80539
		DRAWN	GANESH R 10/05/05	
INTERPRET GEOMETRIC TOLERANCING PER: ANSI Y14.5M 1994	DO NOT SCALE DRAWING	ENGINEER	KBS 10/05/05	TITLE: TRANSMITTAL, 3700 SERIES SENSORS
		THIRD ANGLE PROJECTION		
		SIZE	DWG. NO.	REV
		B	MH3700	A
		SCALE: 1:2	WEIGHT:	SHEET 1 OF 8

- NOTES:
1. MATERIAL:
TEE - 316 STAINLESS STEEL
CLAMP - 304 STAINLESS STEEL
 2. NO GASKETS PROVIDED WITH THIS KIT.
PROBE GASKET COMES WITH PROBE.
 3. CLAMP & TEE CONFORM TO PROVISIONS OF
3-A SANITARY STANDARDS.
 4. DIMENSIONS ARE IN INCHES



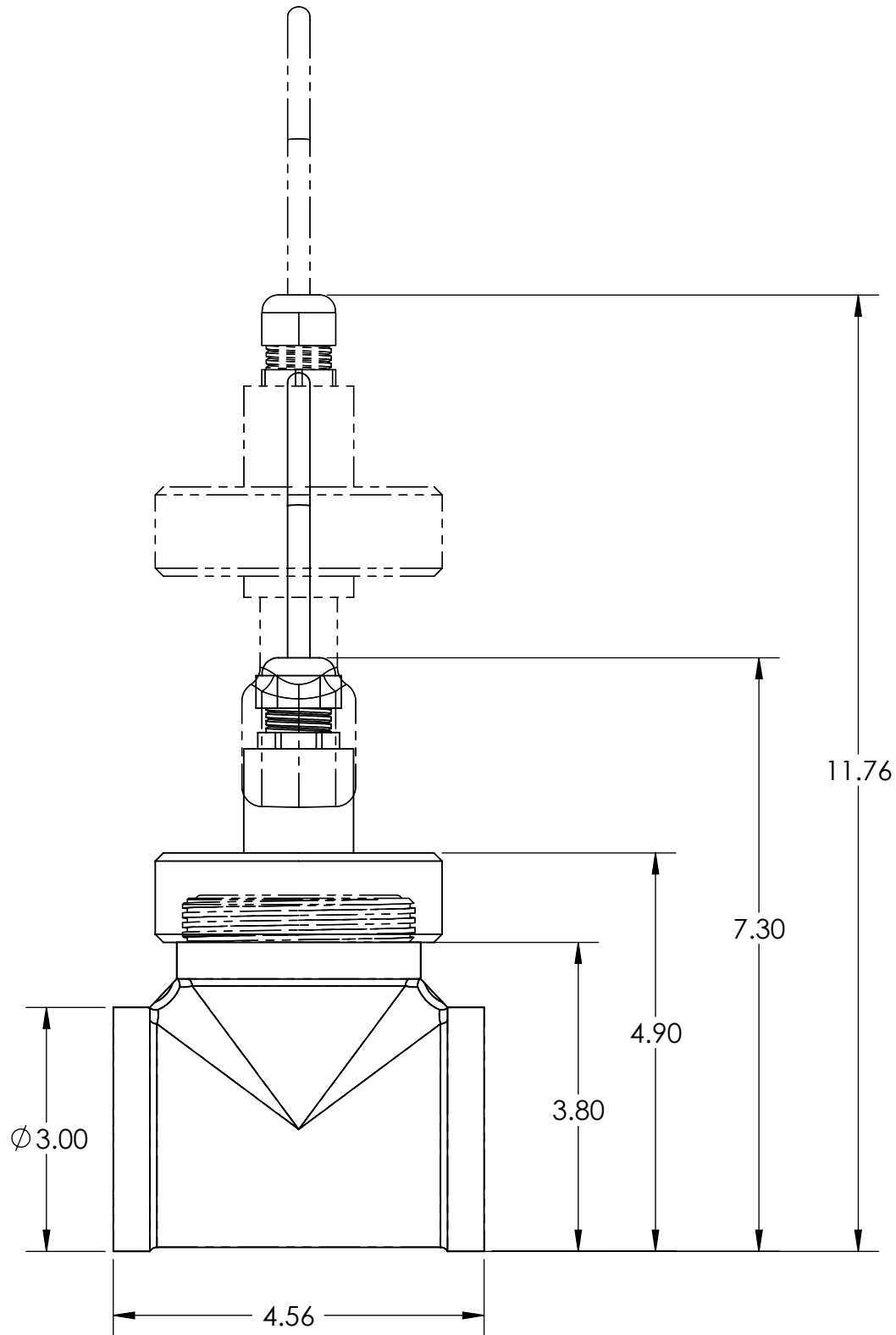
MH018S8SZ (SS316)
SANITARY MOUNT

CLEARANCE REQUIRED
FOR PROBE REMOVAL



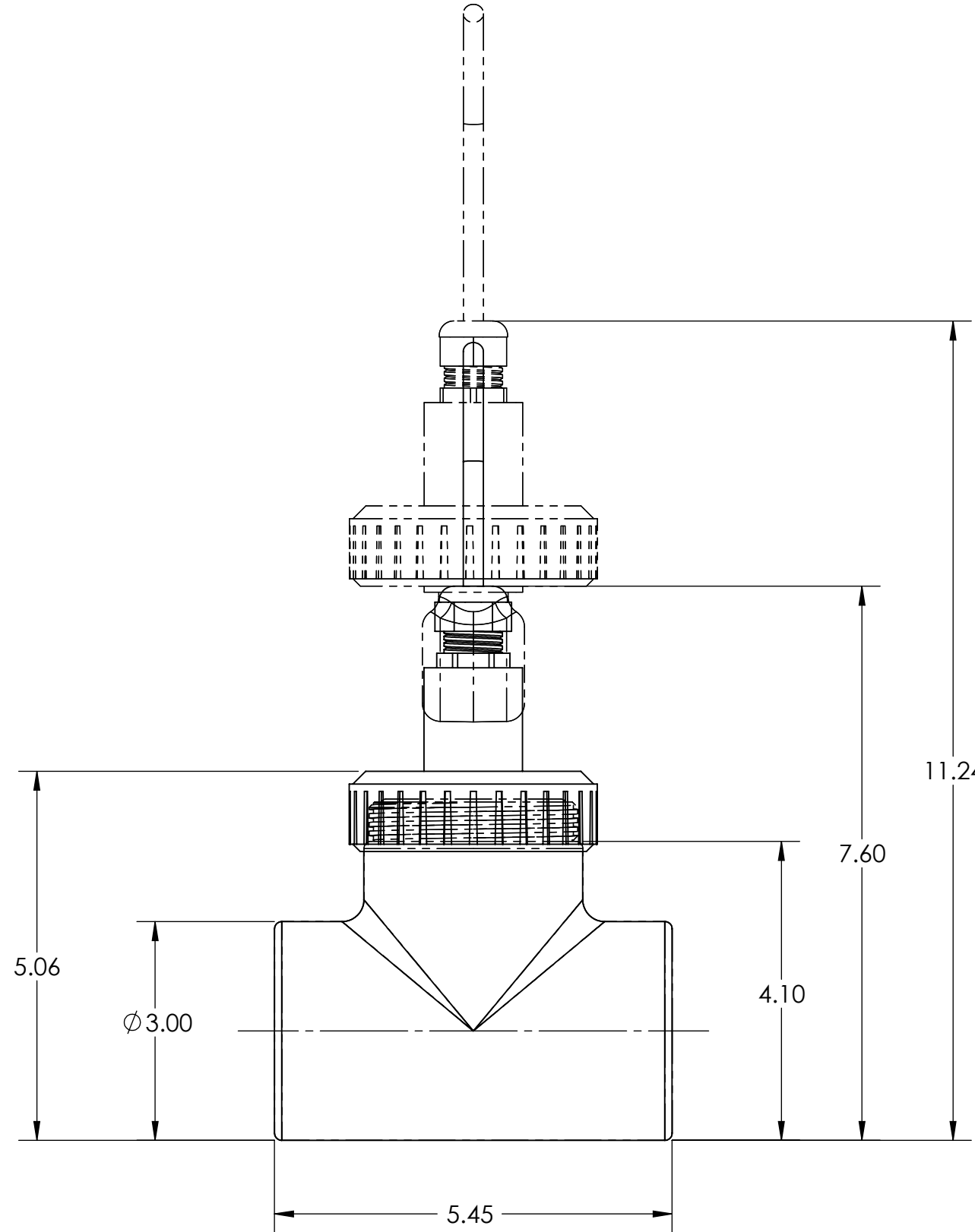
SIZE B	DWG. NO. MH3700	REV A
SCALE: 1:2	WEIGHT:	SHEET 2 OF 8

NOTE:
1. DIMENSIONS ARE IN INCHES



MH518N3NZ (316SS)
UNION MOUNT

CLEARANCE REQUIRED
FOR PROBE REMOVAL



MH538N3NZ (CPVC)
UNION MOUNT

CLEARANCE REQUIRED
FOR PROBE REMOVAL

SIZE B	DWG. NO. MH3700	REV A
SCALE: 1:2	WEIGHT:	SHEET 3 OF 8

NOTES:

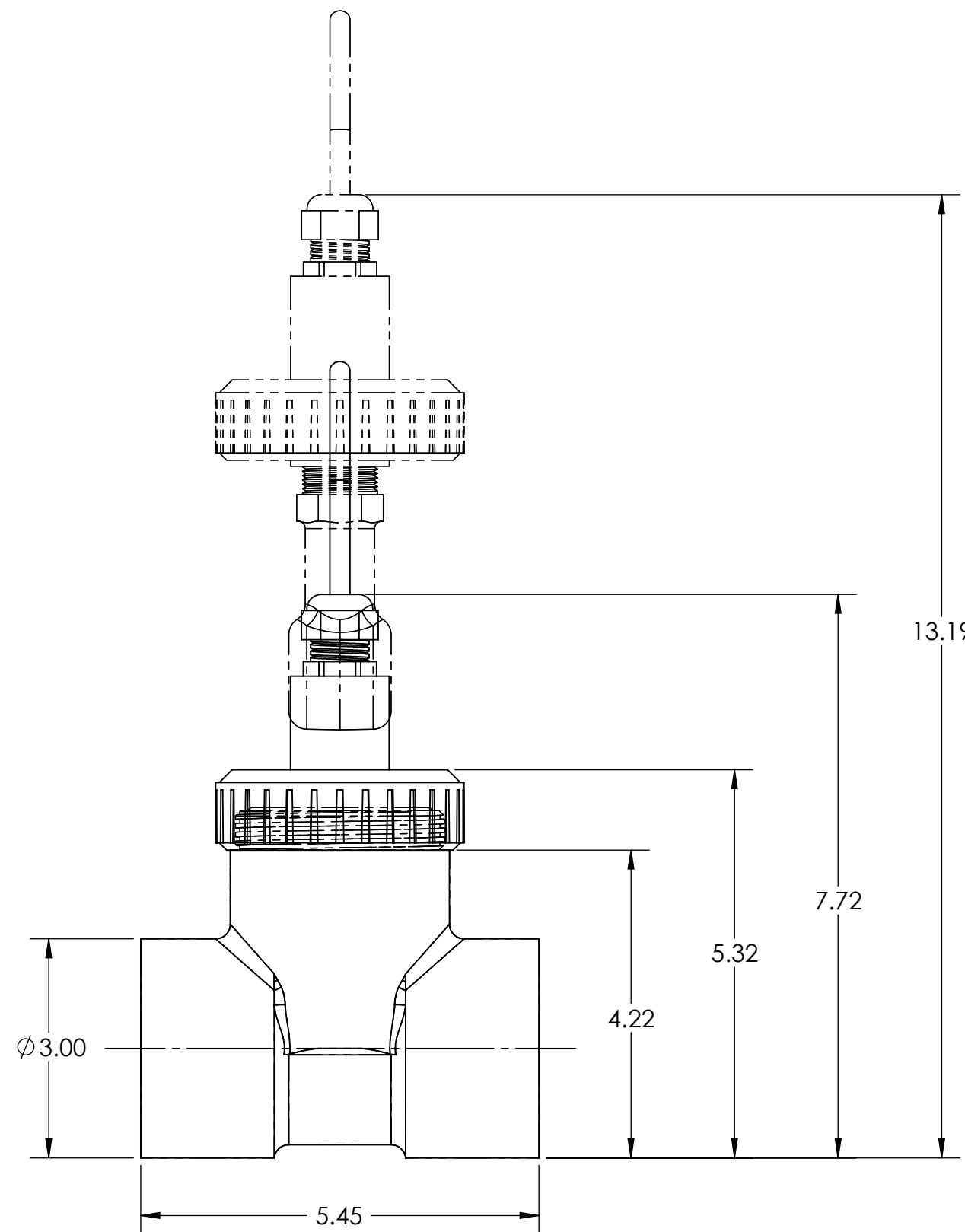
1. ALL MATERIAL OF MH518N3NZ IS STAINLESS STEEL 316.

2. MATERIAL
O - RING - VITON
STRAIN RELIEF - PVC

3. ALL MATERIAL OF MH538N3NZ IS CPVC EXCEPT O-RING & STRAIN RELIEF

4. ALL MATERIAL OF MH568N3NZ IS PVDF EXCEPT O-RING & STRAIN RELIEF

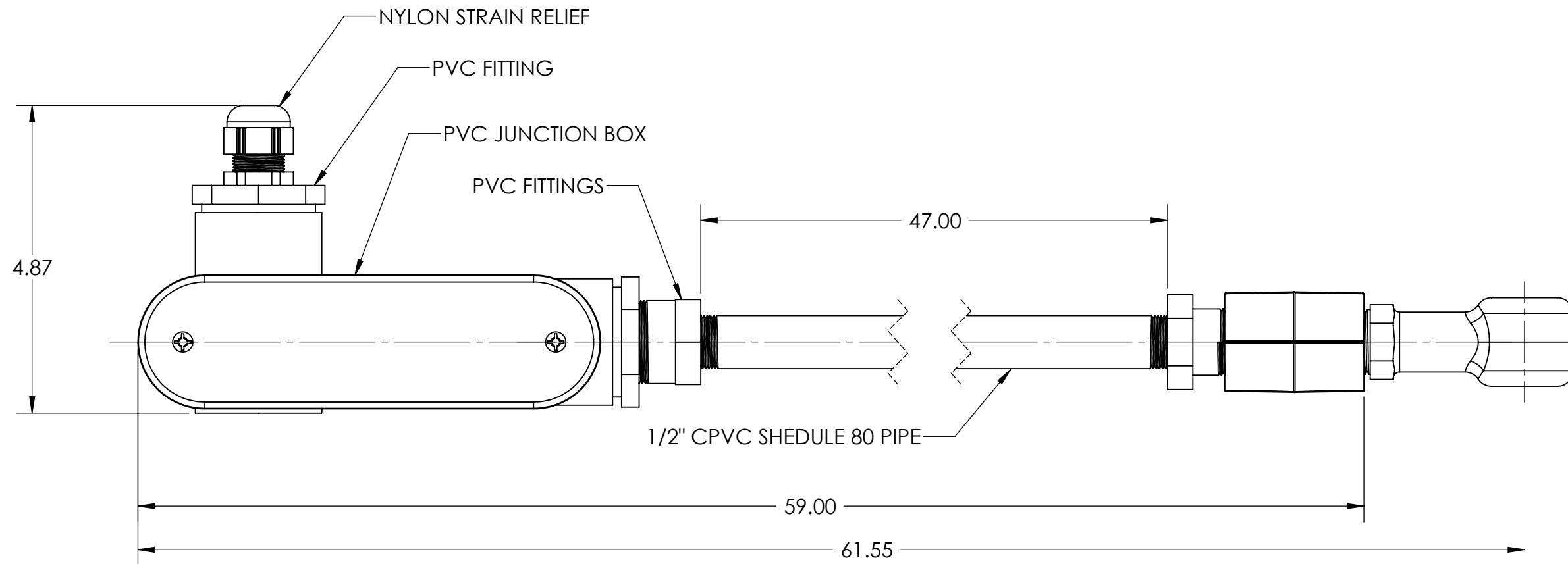
5. DIMENSIONS ARE IN INCHES



**MH568N3NZ (PVDF)
UNION MOUNT**

SIZE B	DWG. NO. MH3700	REV A
SCALE: 1:2	WEIGHT:	SHEET 4 OF 8

NOTE:
1. DIMENSIONS ARE IN INCHES.



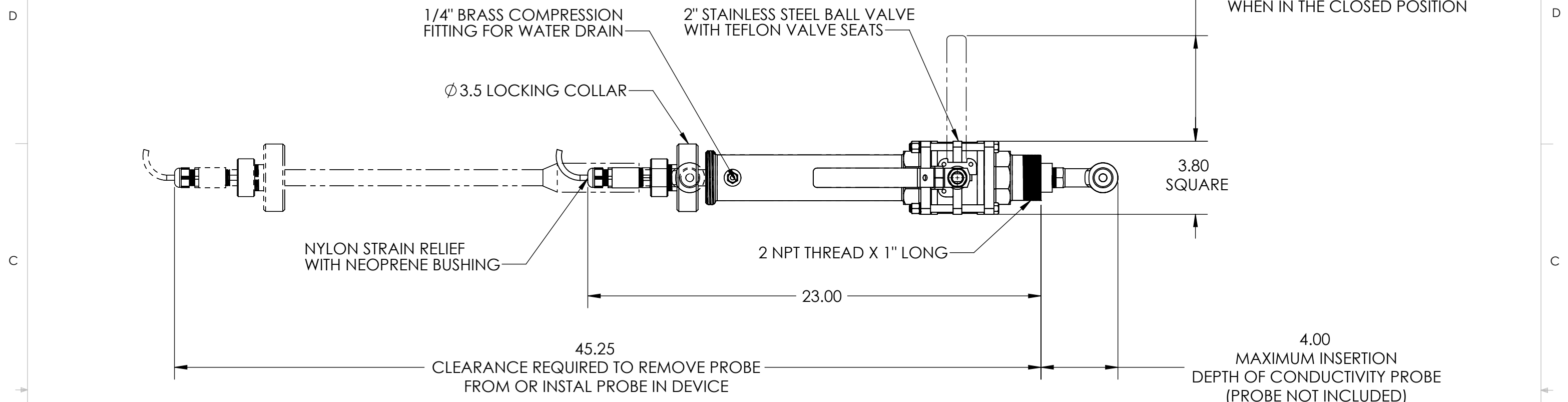
CLEARANCE REQUIRED
FOR PROBE REMOVAL

IMMERSION MOUNT

Immersion mount	MH432G (CPVC Pipe)
	MH462G (PVDF Pipe)

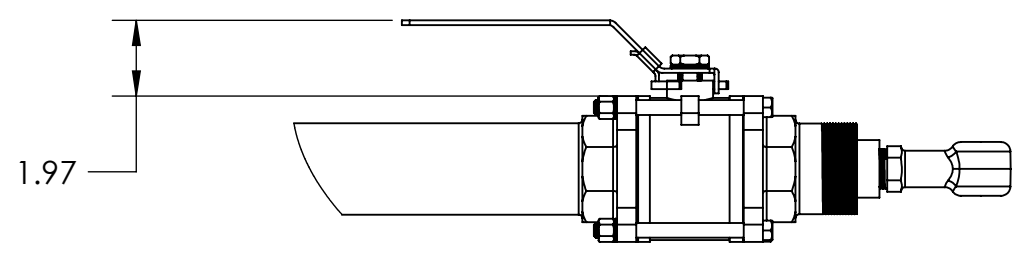
SIZE B	DWG. NO. MH3700	REV A
SCALE: 1:2	WEIGHT:	SHEET 5 OF 8

8 7 6 5 4 3 2 1



C

B



MH118M9NZ (316SS)
INSERION MOUNT

- NOTES:
1. DIMENSIONS ARE IN INCHES.
 2. ALL EXTERNAL PARTS ARE STAINLESS STEEL EXCEPT AS NOTED
 3. TEMPERATURE RANGE : -5°C TO 95°C (23°F TO 203°F)
 4. MAXIMUM PRESSURE : 5.5 BAR AT 95°C (80PSI AT 203°F)

A

SIZE B	DWG. NO. MH3700	REV A
SCALE: 1:5	WEIGHT:	SHEET 6 OF 8

8 7 6 5 4 3 2 1

8 7 6 5 4 3 2 1

D

D

C

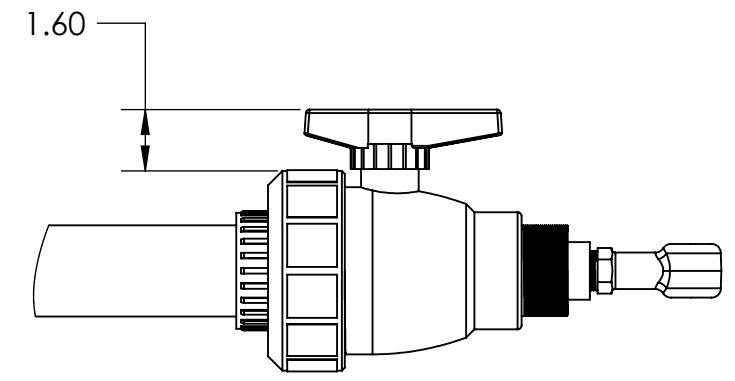
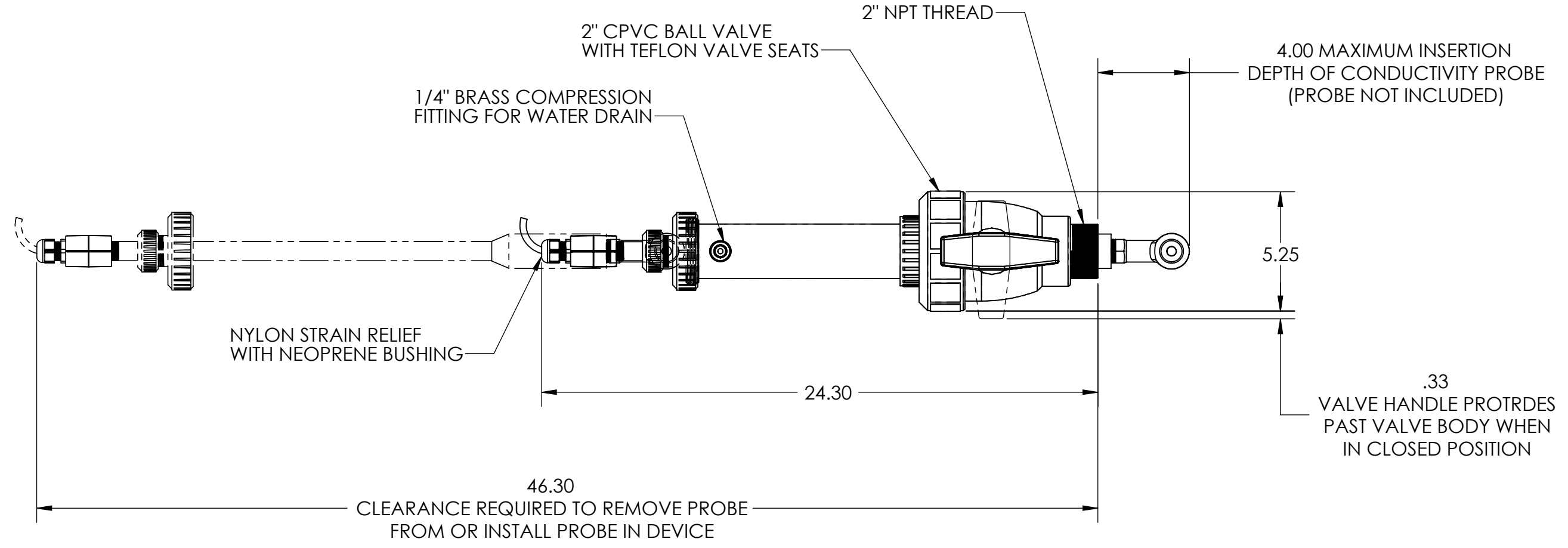
C

B

B

A

A



MH138M9NZ (CPVC) - INSERSION MOUNT

NOTES:

1. DIMENSIONS ARE IN INCHES.
2. ALL EXTERNAL PARTS ARE CPVC EXCEPT AS NOTED
3. TEMPERATURE RANGE , UNSUPPORTED
INSTALLED VERTICALLY : -5 °C TO 80 °C (23 °F TO 176 °F)
4. MAXIMUM PRESSURE : 5.5 BAR AT 90 °C (50PSI AT 194 °F)
5. INSTALLED WITH SUPPORT BRACKET: -5 °C TO 95 °C (23 °F TO 203 °F)

SIZE B	DWG. NO. MH3700	REV A
SCALE: 1:5	WEIGHT:	SHEET 7 OF 8

8 7 6 5 4 3 2 1

D

D

Engineering Specifications

1. The electrodeless conductivity sensor shall measure from 0-200 to 0-2000000 microSiemens/cm , and shall have a built-in Pt 1000 RTD element to compensate measured conductivity for changes in process temperature.
2. The sensor shall be constructed of only one wetted body material which shall be Polypropylene, PVDF, PEEK, or PFA teflon.
3. The sensor cable shall be water resistant and rated to 150°C (302°F) for Polypropylene and PVDF sensors or 200°C (392°F) for PEEK and PFA Teflon sensors.
4. The sensor shall have a 1/2-inch nominal diameter bore for operation in slurries.
5. The sensor shall be a:
 - a) Convertible style that can be directly fastened onto the end of a pipe for immersion mounting or, by using a special Hach union-mount adapter, mounted into any 2-inch NPT fitting (tee, weldolet, pipe saddle, etc.,). The convertible style sensor can also be insertion mounted into a 2-inch ball valve assembly.
 - b) Sanitary style with materials that conform to the provisions of 3-A Sanitary Standards to withstand CIP cleaning, and with an integral 2-inch sanitary-mount flange to mount into a standard 2-inch sanitary tee.
6. The sensor shall be Hach Company 3700 sc or 3700 Inductive Conductivity Sensor.

C

C

B

B

A

A

SIZE B	DWG. NO. MH3700	REV A
SCALE: 1:2	WEIGHT:	SHEET 8 OF 8