

CONNECTION IDENTIFICATION		
I.D.	DESCRIPTION	SIZE
1	SAMPLE INLET - FROM CIT-1	1/4 COMP. (SS)
2	SAMPLE OUTLET	1/4 COMP. (SS)
3	COOLING WATER INLET	3/8 FEMALE NPT (SS)
3B	COOLING WATER INLET (ALTERNATE)	3/8 FEMALE NPT (SS)
4	COOLING WATER OUTLET	3/8 FEMALE NPT (SS)
5	MOUNTING HOLES	7/16 DIA
6	STEAM VENT	1 1/2 TUBE (SS)
7	CONDENSATE DRAIN	3/8 TUBE

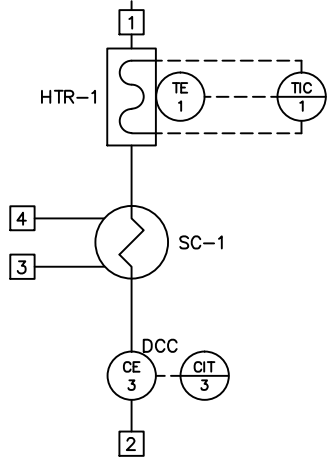
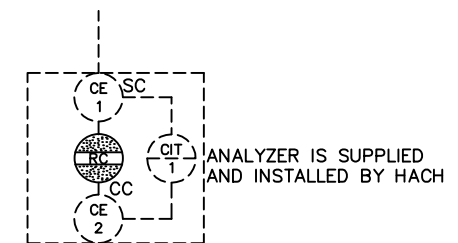
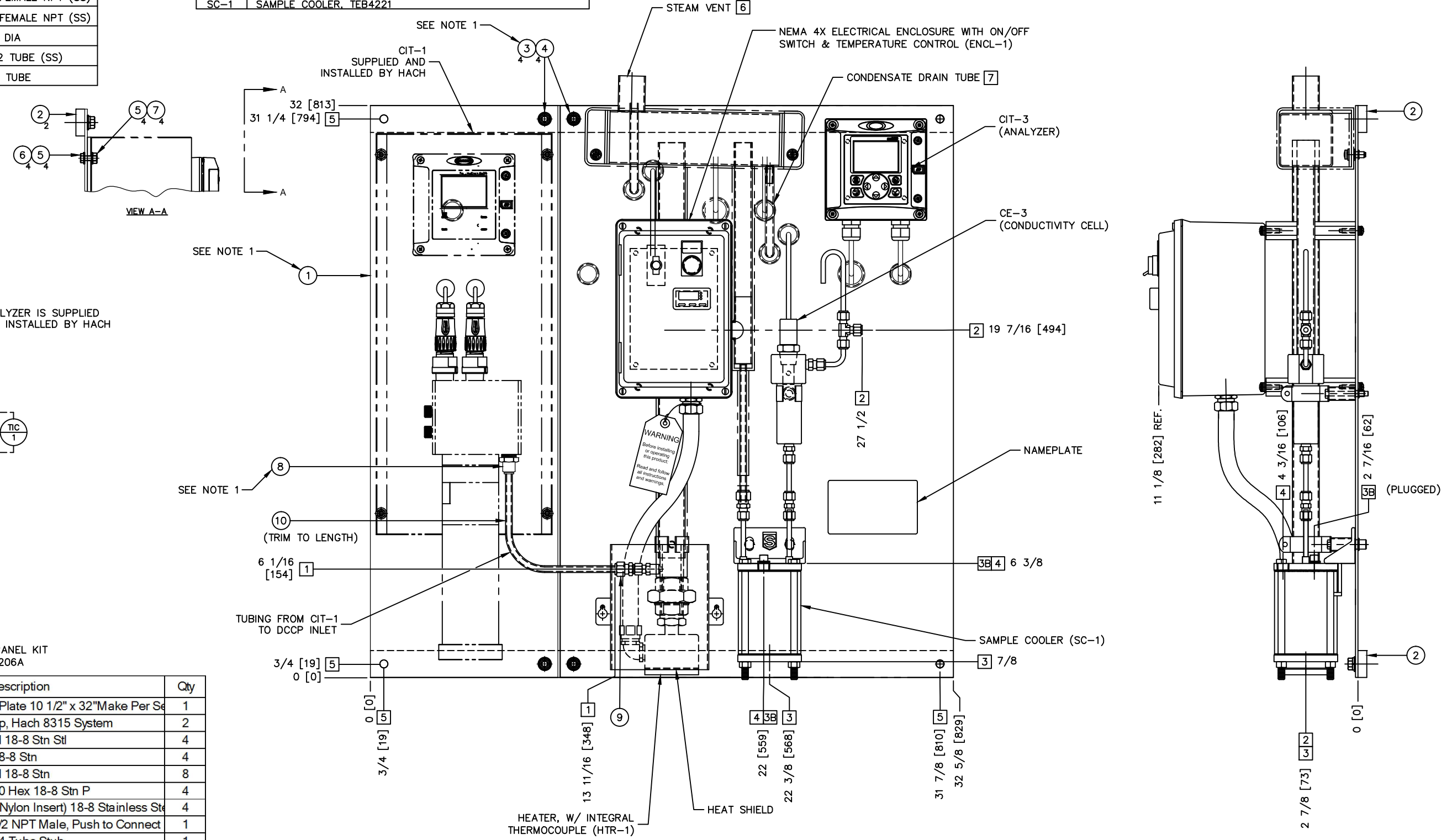
COMPONENT IDENTIFICATION	
I.D.	DESCRIPTION
CIT-1	SC/CC ANALYZER, SUPPLIED & INSTALLED BY HACH
CE-3	CONDUCTIVITY CELL, HACH 8315
CIT-3	DCC ANALYZER, HACH sc200
ENCL-1	NEMA ENCLOSURE
FICV	FLOW INDICATING CONTROL VALVE
HTR-1	HEATER
SC-1	SAMPLE COOLER, TEB4221

NOTE:
1. NUMBERS IN BUBBLES REFER TO ITEM NO.'S ON BILL OF MATERIAL 6-06206A, SEE LOWER LEFT HAND CORNER.

DIMENSIONS IN [] ARE IN MILLIMETERS

FLUID DESCRIPTION	
DESIGN/OPERATING PRESSURE	PSIG
DESIGN/OPERATING TEMPERATURE	F
DESIGN/OPERATING FLOW	cc/min

CONDITIONED SAMPLE INLET	
DESIGN/OPERATING PRESSURE	PSIG
DESIGN/OPERATING TEMPERATURE	F
DESIGN/OPERATING FLOW	cc/min



HACH 9523 ANALYSIS PANEL KIT
B.O.M., P/N: 6-06206A

Item	Part	Description	Qty
1	2-06822N	Analysis Panel Drilling Plate 10 1/2" x 32" Make Per Sec	1
2	2-07546V	Bracket, Panel Tie Strap, Hach 8315 System	2
3	4-00411A	<FS> Wash, Flt. .375 Std 18-8 Stn Stl	4
4	4-01011A	Blt, Hex .375-16x.500 18-8 Stn	4
5	4-00024A	<FS> Wash, Flt. .250 Std 18-8 Stn	8
6	4-00021H	<FS> Scrw., .250-20x.750 Hex 18-8 Stn P	4
7	4-00969F	Nut, .250-20 Hex Lock (Nylon Insert) 18-8 Stainless Stl	4
8	4-05732N	Ftg, 3/8 O.D. Tube, to 1/2 NPT Male, Push to Connect	1
9	4-02867B	Ftg, .3/8 O.D Tube to 1/4 Tube Stub	1
10	1-00842C	Tube, Polyethylene .375x.0625AW Industrial Specialties	1

SHEET 1 OF 1

REVISIONS
1 08/22/16 B.J.H.
ADDED CABLE HOLES IN DCCP BASE PLATE

THIS DRAWING IS BEING SUBMITTED:

FOR REVIEW AND APPROVAL - ORDER WILL BE PROCESSED UPON RECEIPT OF APPROVED AND SIGNED DRAWINGS

CERTIFIED FOR PRODUCTION - FOR INFORMATION ONLY

CERTIFIED "AS BUILT"

WARNING
FOR YOUR SAFETY
IT IS SOLELY THE RESPONSIBILITY OF THE END USER THROUGH THEIR OWN ANALYSIS AND TESTING TO SELECT PRODUCTS AND MATERIALS SUITABLE FOR THEIR SPECIFIC APPLICATION REQUIREMENTS. ENGINEERS ARE RESPONSIBLE FOR THE SAFE APPLICATION, PROPER INSTALLATION, AND MAINTENANCE OF THESE PRODUCTS. THE PRODUCTS DESCRIBED HEREIN ARE SUBJECT TO LIMITED WARRANTIES AND DISCLAIMERS SET FORTH IN THE APPLICABLE PROFORMA AND/OR PURCHASE AGREEMENT, AND SELLER HEREBY DISCLAIMS ALL OTHER WARRANTIES, INCLUDING ANY IMPLIED WARRANTIES OF MERCHANTABILITY OR FITNESS FOR A PARTICULAR PURPOSE.

NOTE:
THIS DOCUMENT IS CONFIDENTIAL AND CONTAINS INFORMATION WHICH IS PROPRIETARY TO SEC. IT IS PROVIDED IN CONFIDENCE AND UPON THE CONDITION THAT NEITHER IT NOR THE INFORMATION CONTAINED IN IT WILL BE COPIED, DISCLOSED, OR USED IN WHOLE OR IN PART WITHOUT THE PRIOR WRITTEN CONSENT OF SEC.

REMOVE ALL BURRS AND SHARP EDGES UNLESS OTHERWISE NOTED

DO NOT SCALE DWG.
ALL DIMENSIONS IN INCHES UNLESS OTHERWISE SPECIFIED
TOLERANCES FOR ALL DIMENSIONS UNLESS OTHERWISE SPECIFIED

	MACH. PARTS	STRUCT.
1/X	± 1/8	± 1/2
.X	± .01	± 0.3
.XX	± 0.005	± 0.06
.XXX	± 0.0005	± 0.030
ANG.	± 1/2°	± 1°

THIRD ANGLE PROJECTION

SENTRY
www.sentry-equip.com

DCCP-130x FOR HACH
DEGASSED CATION CONDUCTIVITY PANEL
GENERAL ARRANGEMENT

FILENAME	DATE DRAWN	DATE CHECKED	DATE APPROVED
06212C01	06/23/2016	B.J.H.	

DWG. NO. 10-06212C