



A Gardner Denver Product

1419 ILLINOIS AVE., SHEBOYGAN, WI 53082
(920) 457-4891 www.rtpumps.com

MODEL NUMBERS:
008CA13 008CDU13
018CA13 018CDU13

Read and understand the follow information and instructions included with this product before using. This information is for your safety and to prevent damage to this product.

CAUTION: To reduce risk of electrical shock..

1. Do not disassemble. Disassembly or attempted repairs if accomplished incorrectly can create electrical shock hazard. Refer servicing to qualified service agencies only.
2. If this plug is supplied with a three pronged plug, connect unit to a properly grounded outlet only.

WARNING: To reduce risk of electrocution ...

1. This product should never be left unattended when plugged in.
2. Always unplug this product immediately after using and store in dry place.
3. Do not use this product in or near area where it can fall or be pulled into water or other liquids.
4. Do not reach for this product if it has fallen into liquid. Unplug immediately.
5. Never operate this product outdoors in the rain or in a wet area.

DANGER: To reduce risk of explosion or fire...

1. Do not use this product in or near explosive atmospheres or where aerosol (spray) products are being used.
2. Do not pump anything other than atmospheric air.
3. Do not pump combustible liquids or vapors with this product or use in or near an area where flammable or explosive liquids or vapors may exist.
4. Do not use this product near flames.

Failure to observe the above safety precautions could result in severe bodily injury, including death in extreme cases.

SAVE THESE INSTRUCTIONS

Warning: Thomas compressors are precision-made, and carefully assembled and wired. Do not disassemble or attempt to repair these products. Repair should be performed by qualified service personnel only.

IMPORTANT NOTICE TO PURCHASER: WARRANTY AND EXCLUSIVE REMEDIES

Thomas finished OEM products, when properly installed and under normal conditions of use, are warranted by Thomas to be free from defects in material and workmanship at time of shipment. Warranty claims regarding OEM limited products must be asserted within 18 months (the "warranty period") from date of manufacture encoded on the product (unless otherwise agreed in writing or specified in a Thomas OEM Quotation). The customer's exclusive remedy against Thomas for a warranty claim or otherwise, shall be limited to repair or replacement of the subject OEM finished product if it is shown to have been defective in material and workmanship at time of shipment, and then only if the claim is asserted during the warranty period. Thomas maximum liability under this exclusive remedy shall never exceed the cost of the subject product and Thomas reserves the right, at its sole discretion, to refund the purchase price in lieu of repair or re placement. Except for such warranty and exclusive remedy as stated (and except for the express warranty of title) THOMAS DISCLAIMS ALL OTHER WARRANTIES WITH RESPECT TO ITS OEM FINISHED PRODUCTS, WHETHER IMPLIED, AND SPECIFICALLY DISCLAIMS THE IMPLIED WARRANTIES OF MERCHANTABILITY AND FITNESS FOR A PARTICULAR PURPOSE. IN NO EVENT

CAUTION: To prevent Injury...

1. Close supervision is necessary when this product is used near children or invalids. Never allow children to operate unit.
2. Never operate this product if it has a damaged cord or plug, if it is not working properly, if it has been dropped or damaged, or if it has fallen into water. Return the product to a service center for examination and repair.
3. Keep the cord away from heated surfaces.
4. Never block any air openings (inlet) of this product or place it on a soft surface where the openings may be blocked. Keep all air openings free of lint, dirt and other foreign objects.
5. Never use while sleeping or drowsy.
8. Never drop or insert fingers or any other object into openings.
7. Do not operate this product where oxygen is being administered.
8. This unit may be thermally protected and can automatically restart when the protector resets. Always disconnect power source before servicing.
9. Wear safety glasses or goggles when operating this product.
10. Use only in well ventilated areas.
11. Do not use any tools or attachments without first determining maximum air pressure for that tool or attachment.
12. Never point any air nozzle or air sprayer toward another person or any part of the body.
13. All electrical products generate heat. To avoid serious burns never touch unit during or immediately after operation.

SHALL THOMAS BE LIABLE TO CUSTOMER OR THIRD PARTIES IN WARRANTY, CONTRACT, NEGLIGENCE, STRICT LIABILITY, OR OTHERWISE, FOR ANY DAMAGES, WHETHER INCIDENTAL OR CONSEQUENTIAL, WHICH ARE ALLEGED TO HAVE BEEN CAUSED BY ONE OR MORE OF OUR PRODUCTS BEYOND THE COST TO THE CUSTOMER OF THE SUBJECT PRODUCT OR PRODUCTS. THE EXCLUSIVE REMEDY FOR ANY CLAIM HAVING BEEN LIMITED TO REPAIR OR REPLACEMENT AS AFORESAID.

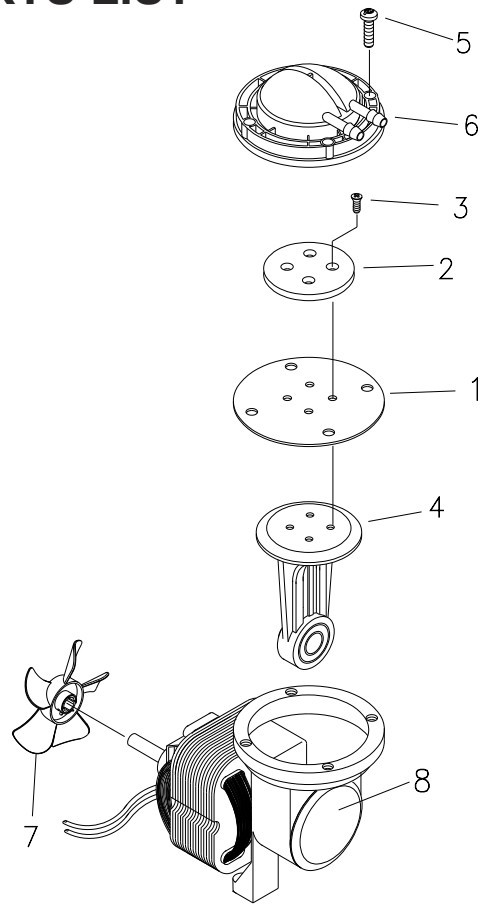
Because Thomas OEM warranties and remedies extend only to our direct customers, the customer is not authorized to extend warranties on our behalf to anyone. Unauthorized extensions of warranties by the customer shall remain customer's responsibility.

CUSTOMER IS RESPONSIBLE FOR DETERMINING THE SUITABILITY OF OUR PRODUCTS FOR CUSTOMER'S USE OR RESALE, OR FOR INCORPORATING THEM INTO OBJECTS OR FOR APPLICATIONS WHICH CUSTOMER DESIGNS, ASSEMBLES, CONSTRUCTS OR MANUFACTURES.

DRAWING AND PARTS LIST

008CA13			
Item No.	Part No.	Description	Qty
1	608815	Diaphragm	1
2	621562	Diaphragm Hold Down Plate	1
3	625082	Screw - Hold Down Plate	4
4	607724	Connecting Rod & Bearing Assembly	1
5	625646	Screw - Head	4
6	664398	Head Plate Assembly	1
7	638112	Fan - 5 Blade	1
8	633930	Snap-in Cover	1
Motor 115 Volts 60 Hz			

Model 008CDU13				
Item	Delete	Add	Description	Qty
7	638112	638929	Fan - 5 Blade - Gray	1
Motor 220-240 Volts 50 Hz				



Model 018CA13			
Item No.	Part No.	Description	Qty
1	608815	Diaphragm	1
2	621562	Diaphragm Hold Down Plate	1
3	625082	Screw - Hold Down Plate	4
4	607724	Connecting Rod & Bearing Assembly	1
5	625433	Screw - Head	4
6	664193	Head Plate Assembly	1
7	633928	Fan - 5 Blade	1
8	633930	Snap-in Cover	1
Motor 115 Volts 60 Hz			

Model 018CDU13				
Motor 220-240 Volts 50 Hz				

