



# Phosphax Monitoring Panel with SC1000 and Filtrax

**Applications**  
• Nutrient Monitoring



## Expertise + Simplicity

The Phosphax Panel combines the Phosphax, Filtrax, and SC1000 Controller into one convenient, pre-engineered solution. Ready to install straight out of the box, this versatile panel is engineered for both indoor and outdoor use. It ensures compliance with evolving nutrient regulations, making it a complete package for efficient and effective phosphorus management. Save time and enhance quality with this all-in-one panel configuration, fully supported by Hach® for a comprehensive solution.

### Quality from start to finish

Our panel configurations allows you to maximize the inherent quality of the instruments, providing peace of mind while leveraging Hach's 100 years of water quality innovations.

### Up and running in no time

Our preassembled, ready-to-use solutions streamline the process between purchasing and startup.

### Ease of installation

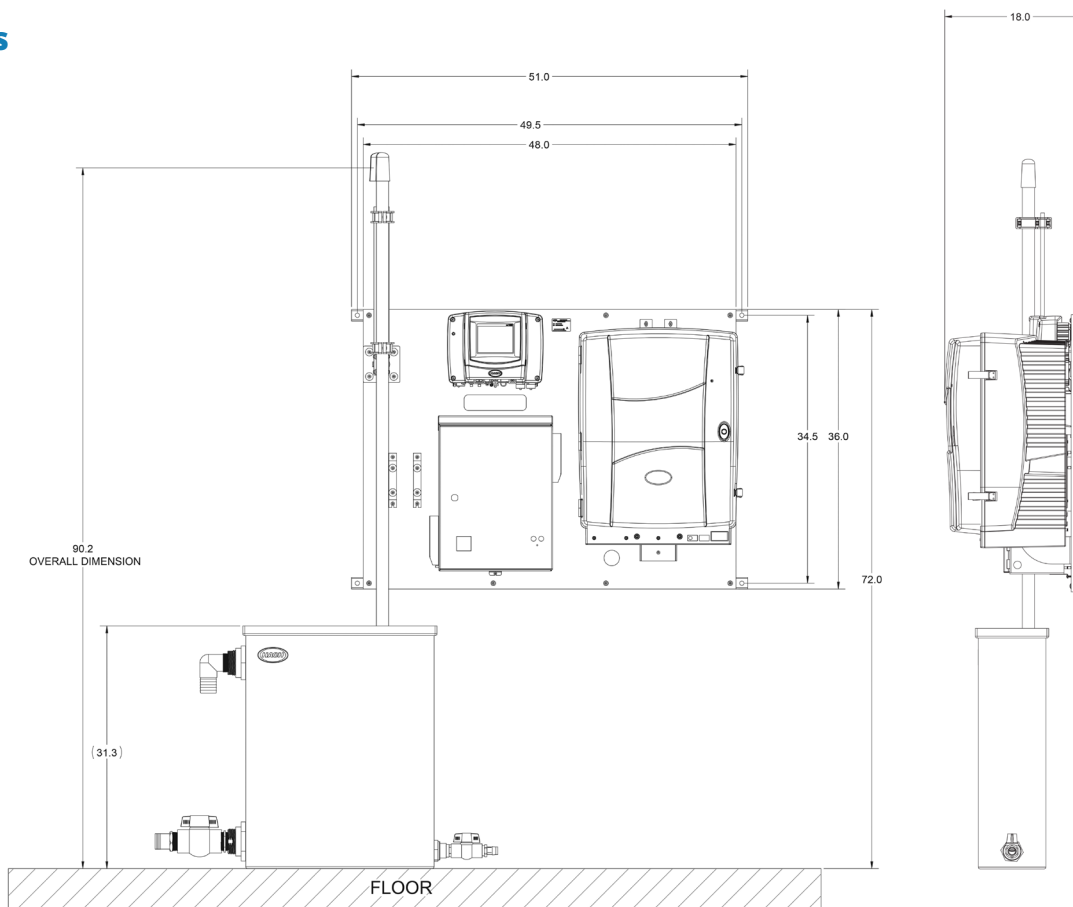
When you buy a water quality monitoring station from Hach, you'll receive an expertly designed, preassembled panel that makes installation straightforward and user friendly.

## Technical Data\*

<b>Dimensions</b>	Panel: 129.5 x 91.4 x 45.7 cm (51 x 36 x 18 inch) Tank: 61.6 x 79.5 x 22.2 cm (24.25 x 31.30 x 8.75 inch)
<b>Weight</b>	101 kg (222 lbs.) with installed reagents, Filtrax system and optional Solitax sensor; 68 kg (150 lbs.) without reagents, Filtrax system and optional Solitax sensor.
<b>Power</b>	SC1000 Controller: 100 - 240 (±10) VAC, 50/60 Hz; max. 1000 VA Filtrax: 115 (±10) VAC, 50/60 Hz, max. 2100 VA Phosphax sc: 115 - 230 VAC, 500 VA, 4.35 A
<b>Sample Flow Rate</b>	Through tank assembly: 40.0 L/min. (10.6 gal/min.) max.
<b>Sample Inlet Connection</b>	Sample Inlet connection: 1-inch ID hose barb
<b>Drain</b>	Sample wast drain connection: 2-inch ID hose barb

\*Subject to change without notice.

## Dimensions



## Order Information

**DPMP-POFTX** Dual Parameter Monitoring Panel with SC1000, Phosphax and Filtrax

### Installation

The panels come fully assembled on a corrosive-resistant HDPE panel with fiberglass mounting rails for easy installation onto a wall or rack. Simply connect the sample line (¼" OD tube, factory supplied) to the inlet port and run a waste line (¾" ID reinforced PVC hose) from the outlet port to a drain. The total sample flow requirement is 100 - 1000 mL/min. A 115 V, 60Hz power source is required. Total power consumption is 500 VA maximum.



World Headquarters: Loveland, Colorado USA | [hach.com](http://hach.com)

United States 800-227-4224 fax: 970-669-2932 email: [orders@hach.com](mailto:orders@hach.com)  
Outside United States 970-669-3050 fax: 970-461-3939 email: [int@hach.com](mailto:int@hach.com)

©Hach Company, 2024. All rights reserved.

In the interest of improving and updating its equipment, Hach Company reserves the right to alter specifications to equipment at any time.

DOC053.53.35356.Sep24