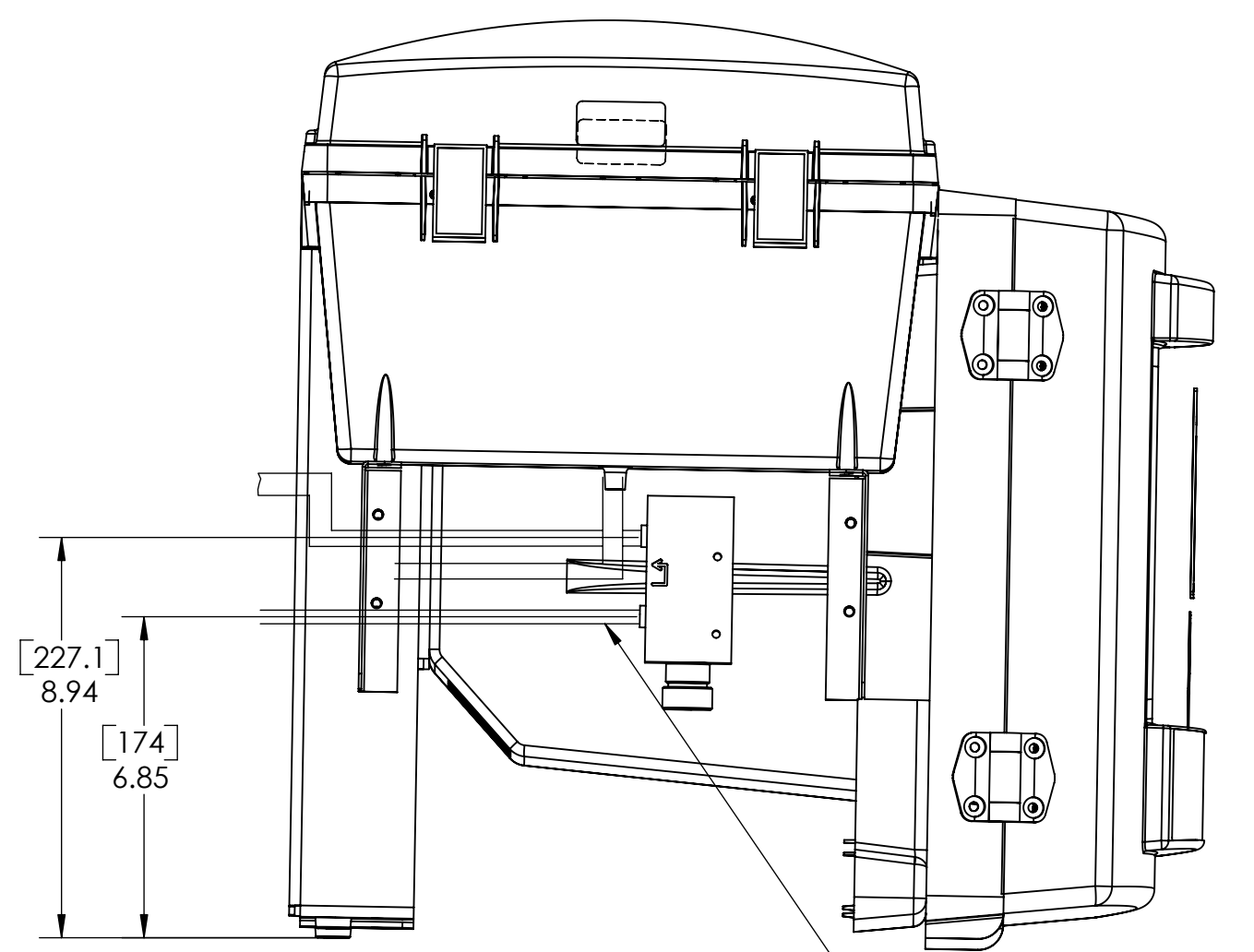
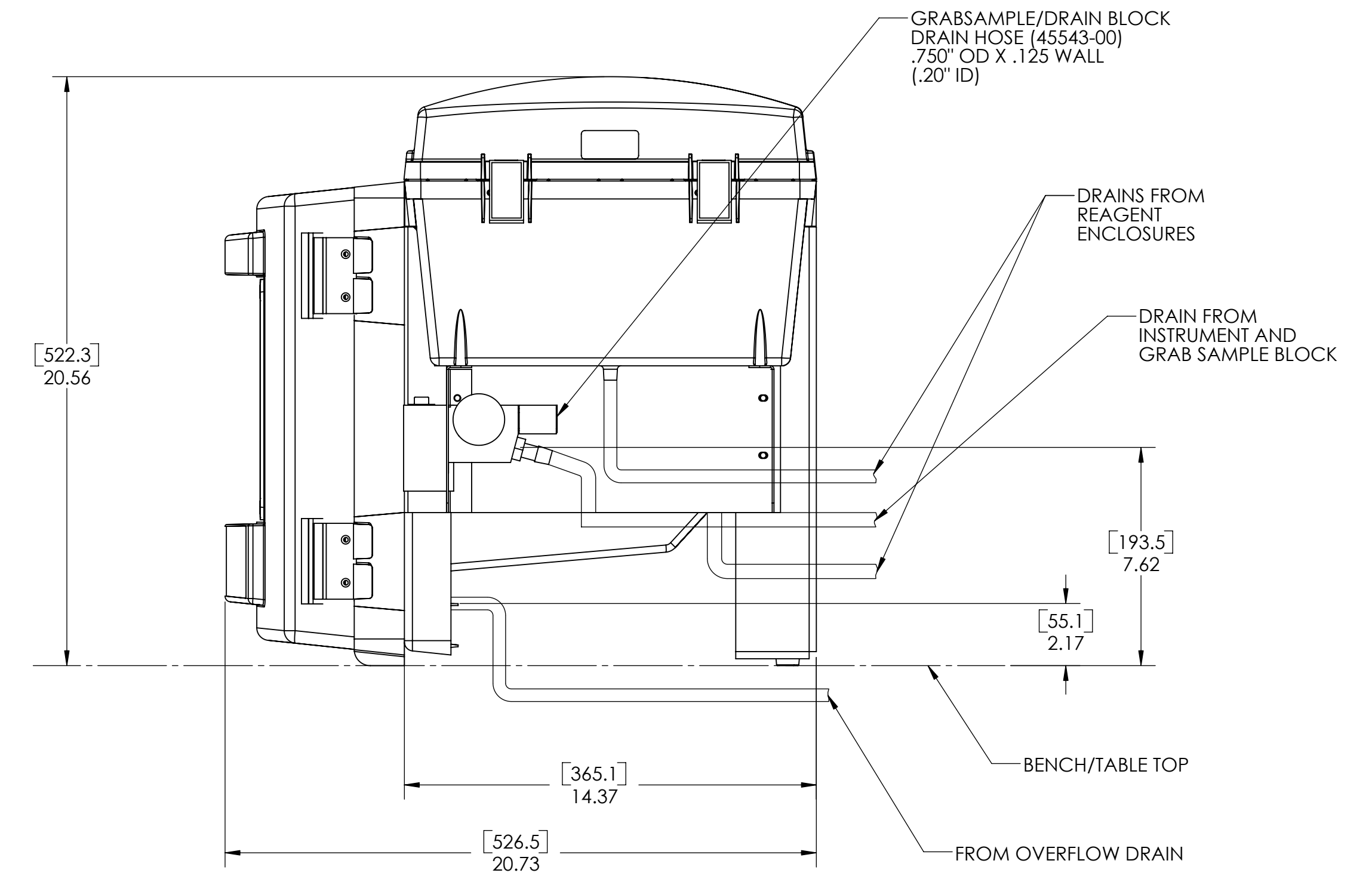
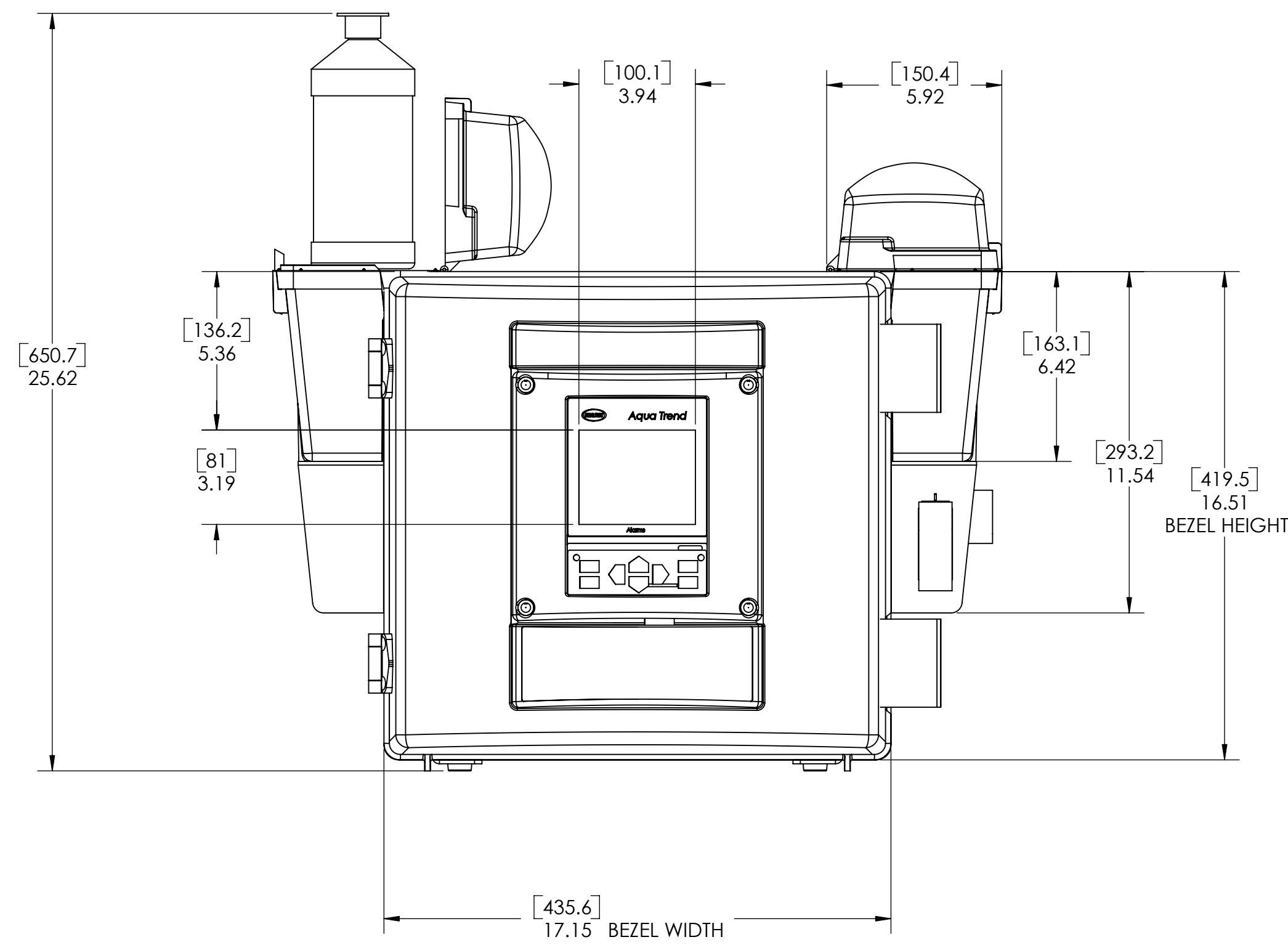
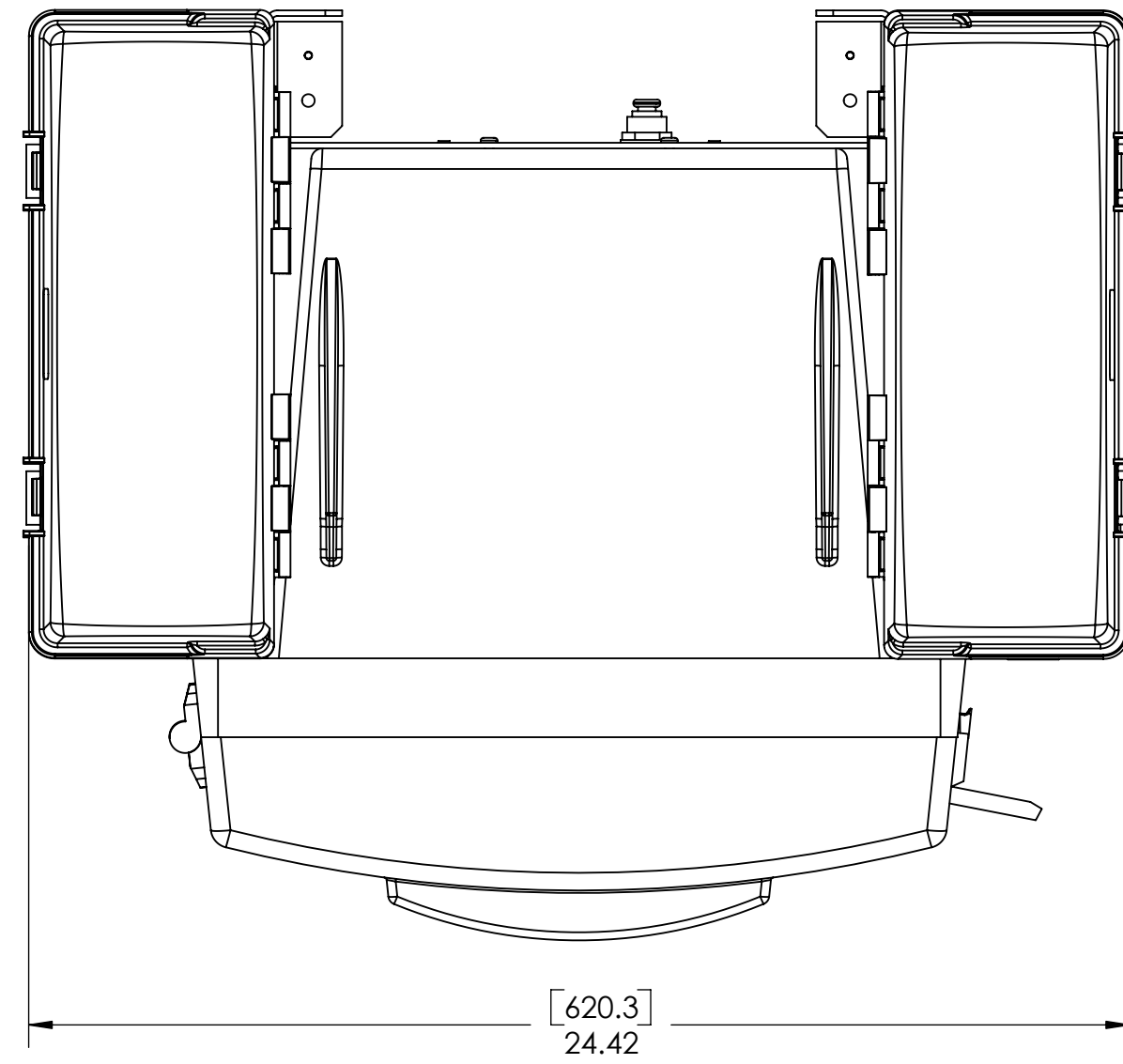


NOTES:  
1. ALL DIMENSIONS ARE IN INCHES [MILLIMETERS].

| REVISION |                       |               |
|----------|-----------------------|---------------|
| REV      | DESCRIPTION           | APPROVED      |
| B        | REVISED PER R-1040-99 | Venkate Raman |



SECTION A-A

SAMPLE INLET BLOCK  
TUBING(47438-00)  
.250" OD X .040"  
WALL POLYETHYLENE

GRABSAMPLE/DRAIN BLOCK  
DRAIN HOSE (45543-00)  
.750" OD X .125 WALL  
(.20" ID)

DRAINS FROM  
REAGENT  
ENCLOSURES

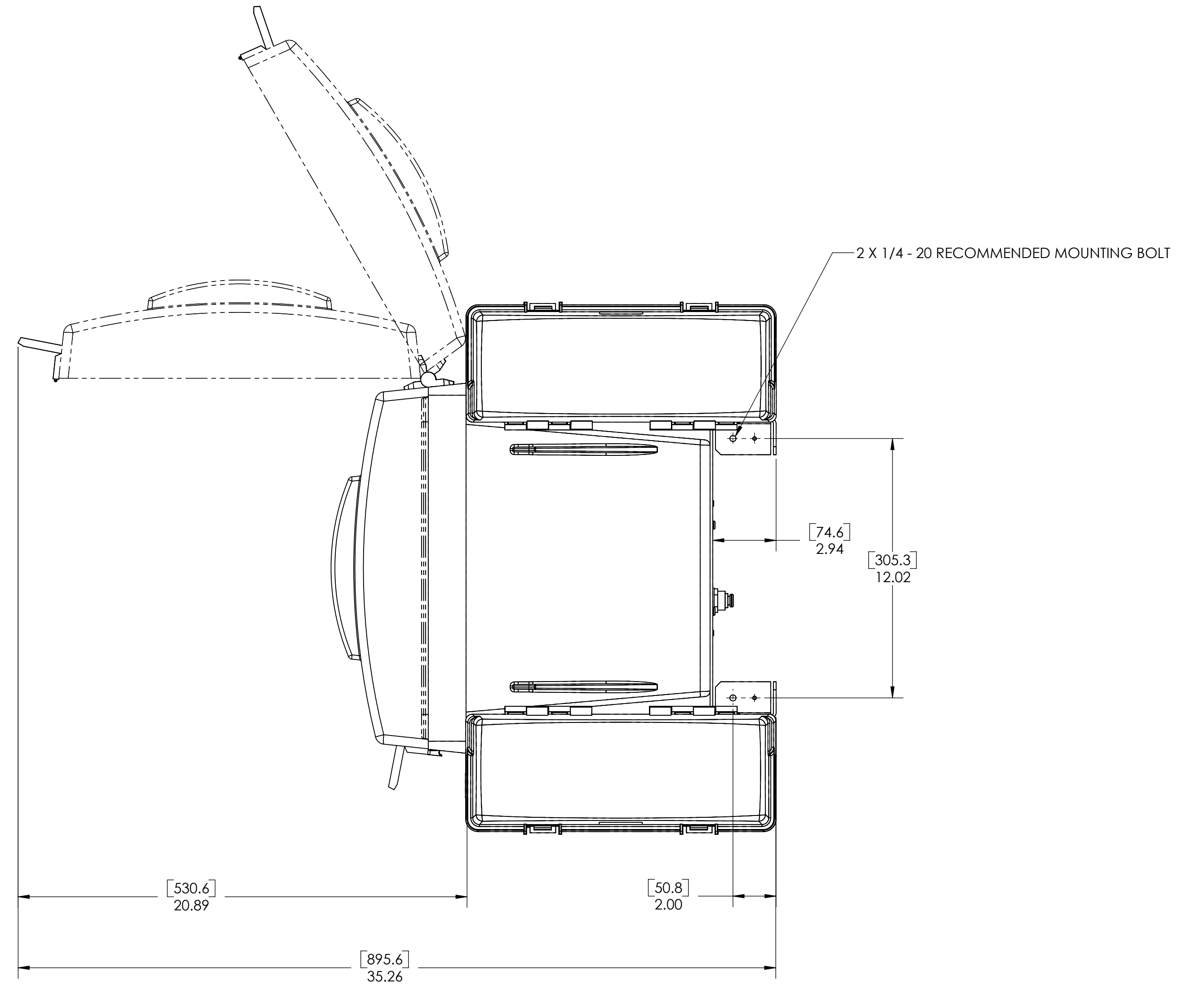
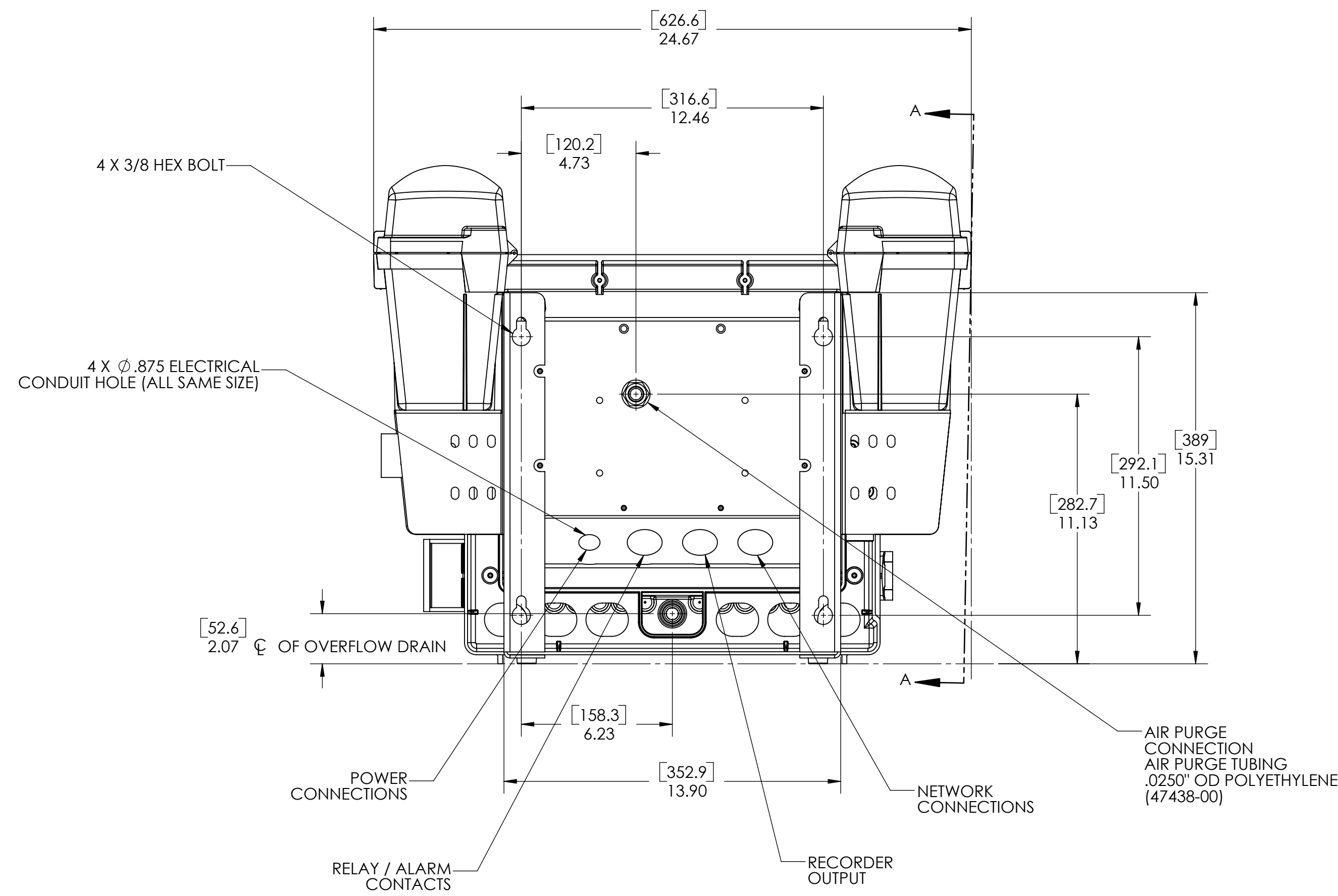
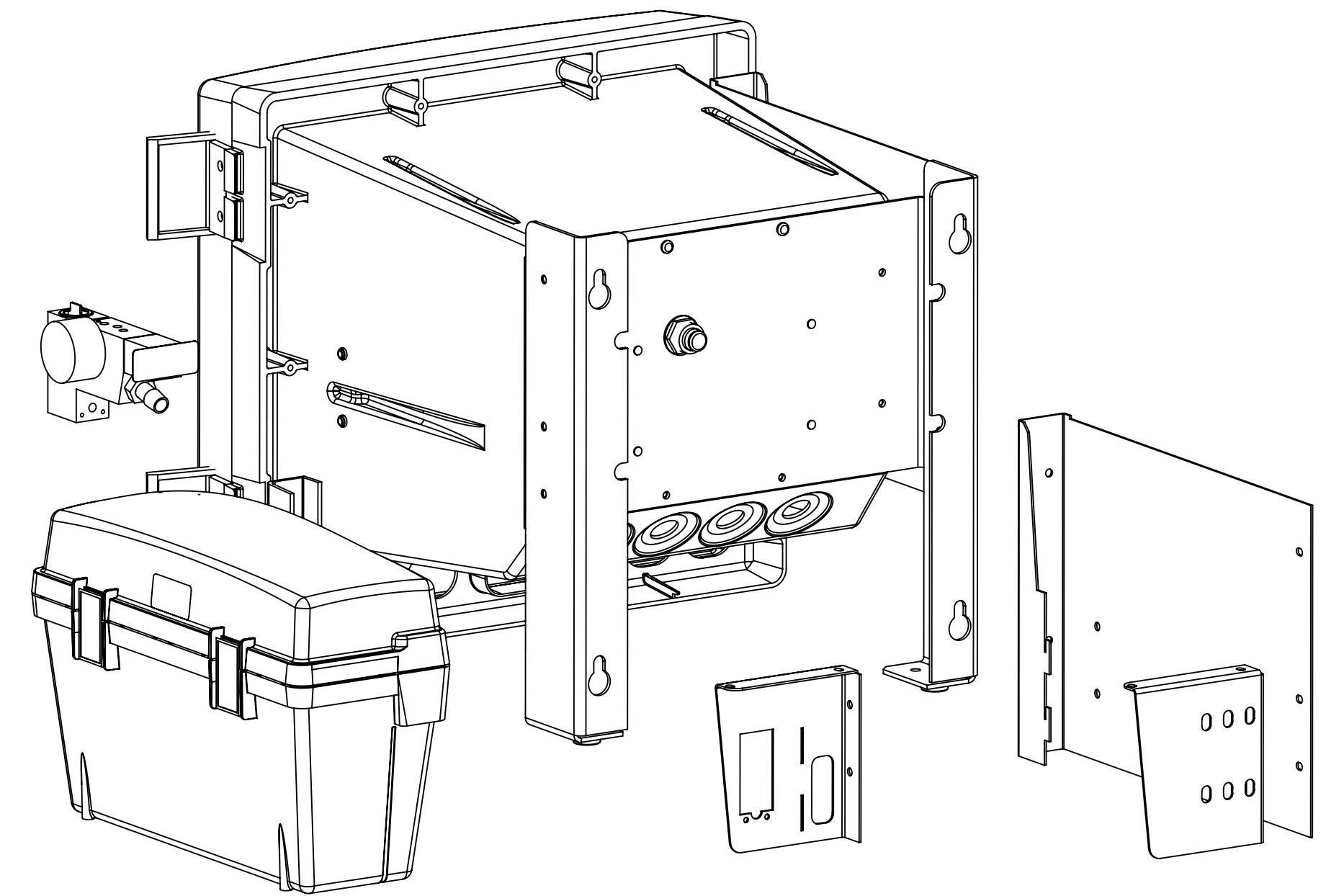
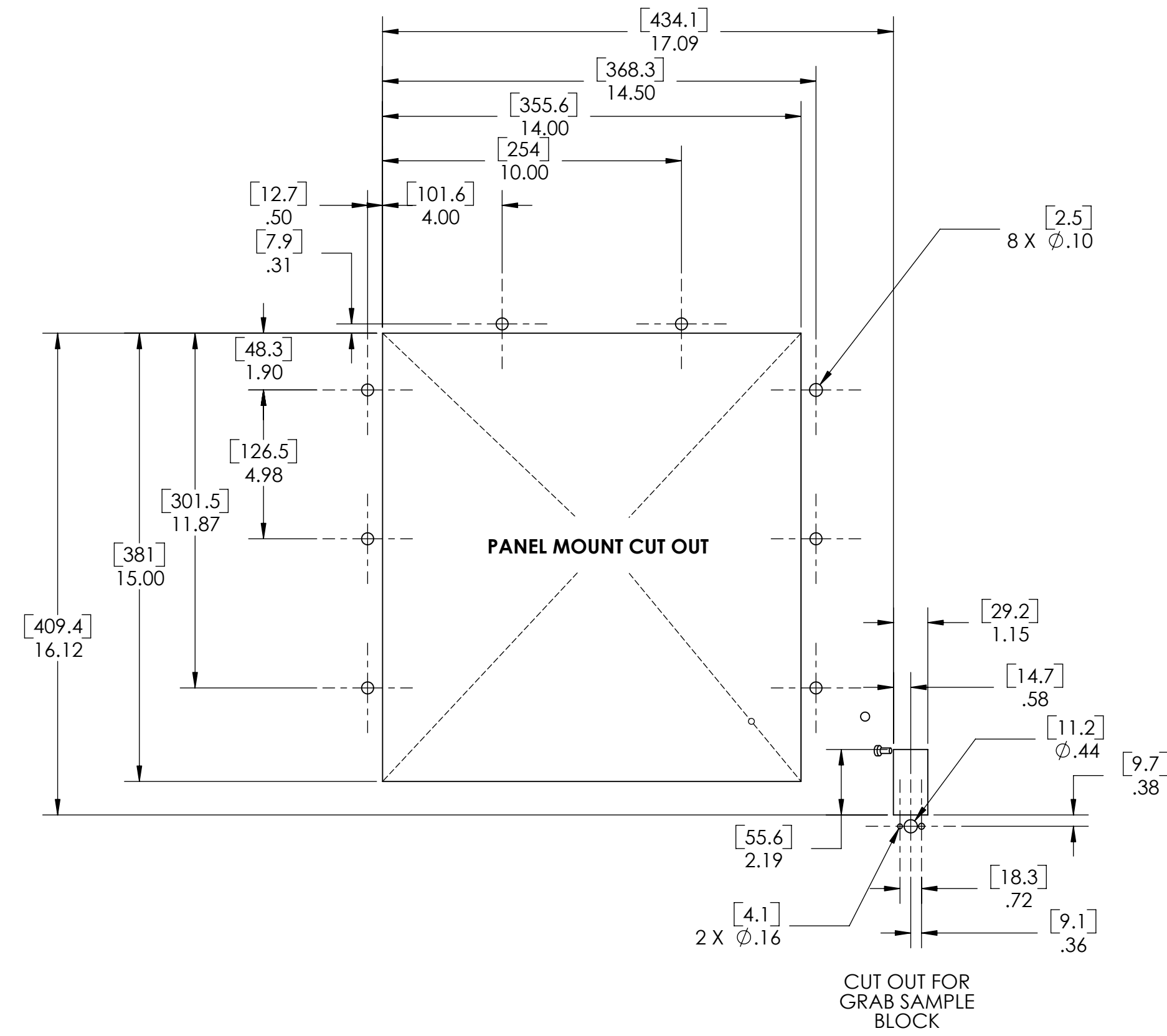
DRAIN FROM  
INSTRUMENT AND  
GRAB SAMPLE BLOCK

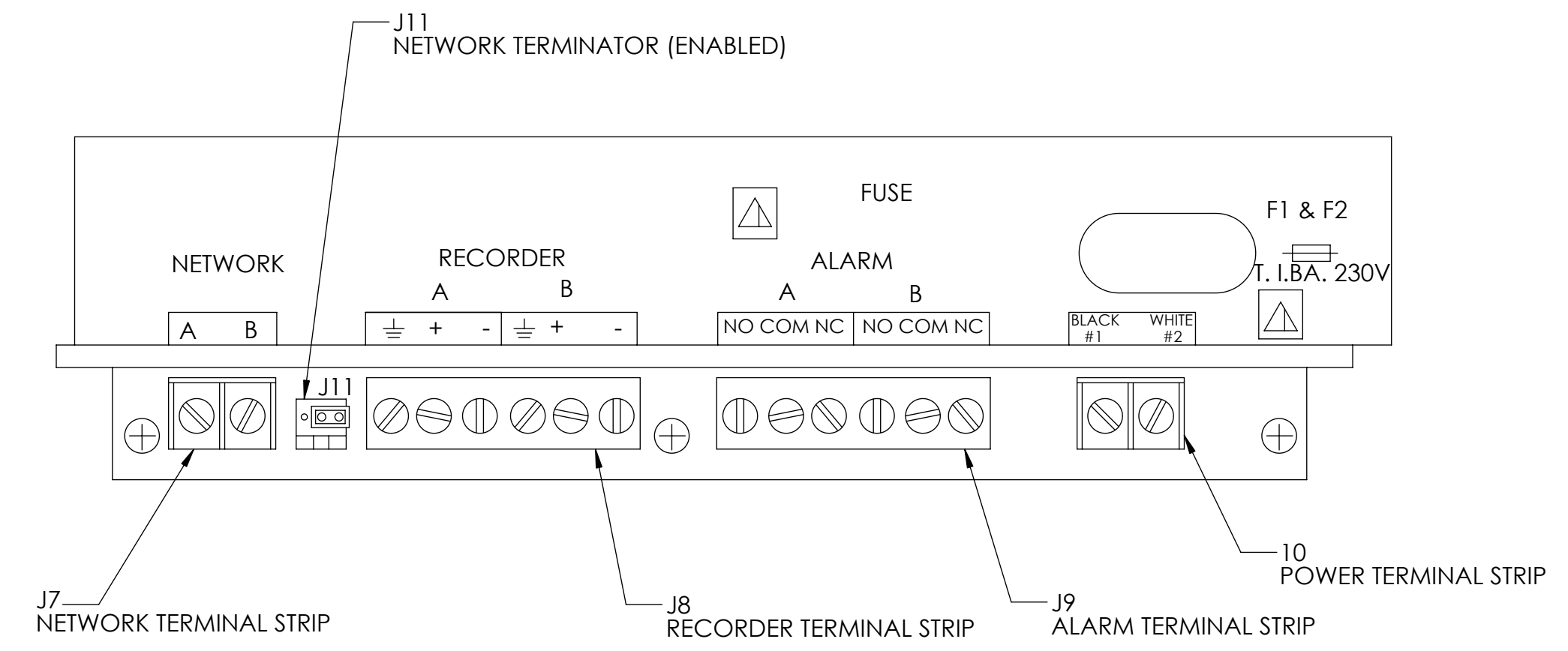
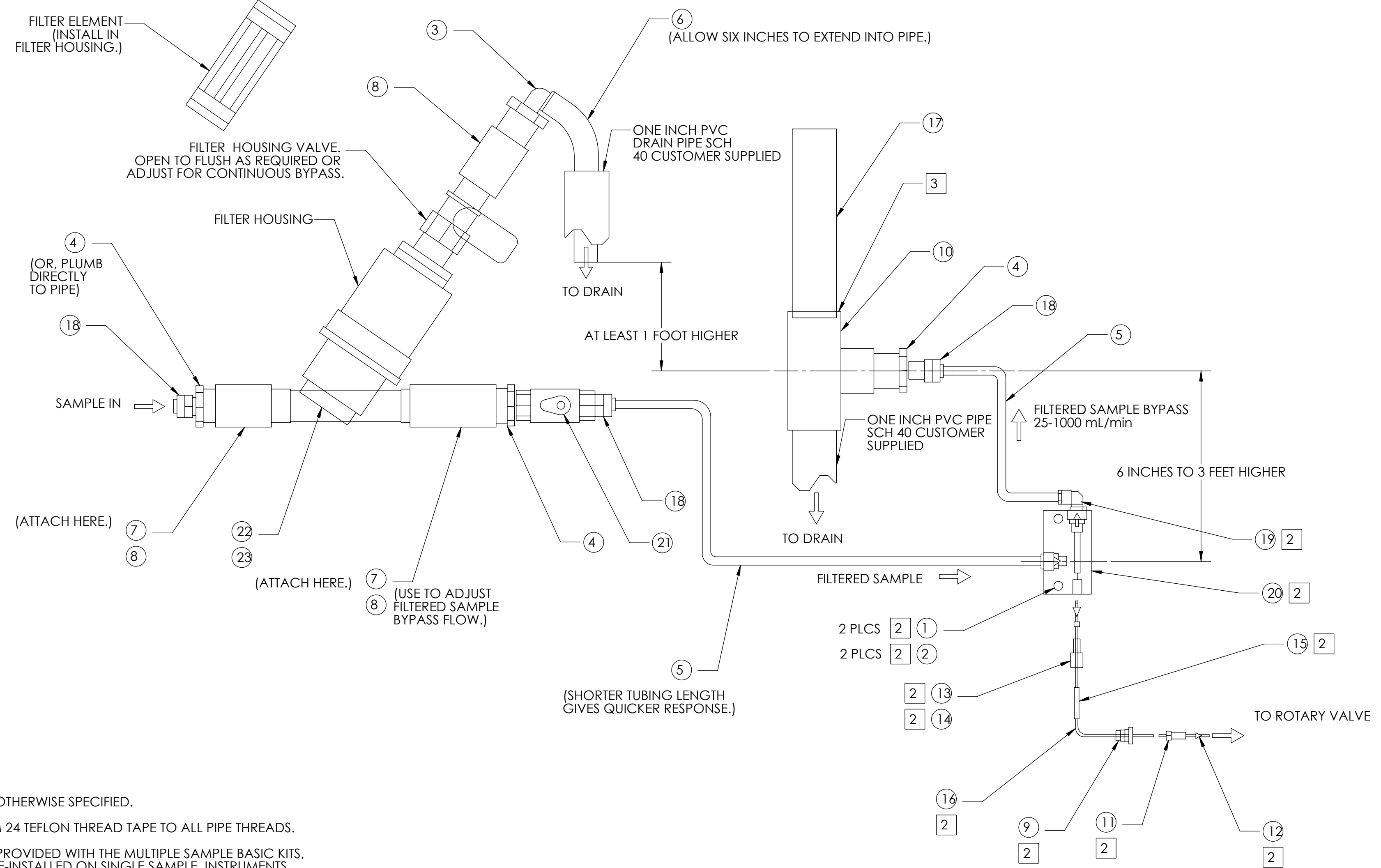
BENCH/TABLE TOP

FROM OVERFLOW DRAIN

NOTICE-HACH COMPANY CLAIMS PROPRIETARY RIGHTS IN THE INFORMATION DISCLOSED ON THIS DRAWING. IT IS ISSUED IN CONFIDENCE FOR ENGINEERING INFORMATION ONLY AND MAY NOT, IN WHOLE OR IN PART, BE USED TO MANUFACTURE ANYTHING, WHETHER OR NOT SHOWN HEREON, REPRODUCED OR DISCLOSED TO ANYONE WITHOUT DIRECT PERMISSION FROM HACH COMPANY.

|          |   |  |      |   |
|----------|---|--|------|---|
| MATERIAL | UNLESS OTHERWISE SPECIFIED:                           | NAME   | DATE | <br>HACH COMPANY<br>5600 LINDBERH DR<br>LOVELAND, CO. 80539 |
|          | DIMENSIONS ARE IN INCHES                              | DRAWN  | CPH  |   |
|          | TOLERANCES:   | ENGINEER                                       | JH   | 04/02/98  |
|          | X = ±   | THIRD ANGLE PROJECTION                         |      |   |
|          | XX = ±  |  |      |   |
|          | XXX = ±   | TITLE: TRANSMITTAL,<br>APA 6000                |      |   |
|          | ANGLES = ±  | SIZE DWG. NO. REV<br><b>D</b> 5101287 <b>B</b> |      |   |
|          | INTERPRET GEOMETRIC TOLERANCING PER: ANSI Y14.5M 1994 | SCALE: 1:4 WEIGHT: SHEET 1 OF 3                |      |   |
|          | DO NOT SCALE THIS SHEET                               |  |      |   |





NOTES: UNLESS OTHERWISE SPECIFIED.

- 1. APPLY ITEM 24 TEFLON THREAD TAPE TO ALL PIPE THREADS.
- 2. ITEMS ARE PROVIDED WITH THE MULTIPLE SAMPLE BASIC KITS, BUT ARE PRE-INSTALLED ON SINGLE SAMPLE INSTRUMENTS.
- 3. USE PVC PIPE CEMENT TO ASSEMBLE.

| ITEM | DESCRIPTION  | CATALOG NUMBER   |
|------|--|------------------|
| 1    | SCREW, 6-32X 1.5 PAN HEAD (2)                        | 5593-11          |
| 2    | SCREW, 6-32X 2.5 PAN HEAD (2)                        | 19495-00         |
| 3    | FITTING, ELBOW, 1/2-INCH ID TUBING X 3/4-IN. NPT (1) | 30618-00         |
| 4    | FITTING, REDUCER 3/4-INCH NPT X 1/4 IN. FNPT (3)     | 31560-00         |
| 5    | TEFLON TUBING, .170 ID X .250 OD (10 FEET)           | 45462-00         |
| 6    | TYGON TUBING, 3/4 INCH OD X 1/4 IN. WIDE (2 FEET)    | 45543-00         |
| 7    | CLAMP, CONDUIT HANGER, 1-IN. (2)                     | 47349-00         |
| 8    | COUPLING, 3/4-INCH NPT X 3/4-IN. NPT (3)             | 49620-00         |
| 9    | MANIFOLD, GROMMET (1)                                | 51036-00         |
| 10   | TEE FITTING, 1X1 SOC X 3/4 - IN. FNPT (1)            | 51080-00         |
| 11   | HEX NUT FITTING, FOR .062 OD TUBING (1)              | 51129-00         |
| 12   | FERRULE FITTING, FOR .062 OD TUBING (1)              | 51130-00         |
| 13   | FLANGELESS NUT FITTING, FOR .062 OD TUBING (1)       | 51131-00         |
| 14   | FERRULE FITTING, FOR .062 OD TUBING (1)              | 51132-00         |
| 15   | CLEAN WATER LABEL (AFFIX TO SAMPLE LINE) (1)         | PART OF 51139-00 |
| 16   | TEFZEL TUBING, .30 ID X .062 OD (3FEET)              | 51178-00         |
| 17   | PVC PIPE, 1-IN. (1)                                  | 51239-00         |
| 18   | MALE CONNECTOR FOR 1/4-IN. TUBING (3)                | 51246-00         |
| 19   | TUBE FITTING, 1/4-IN. TUBE X STEM ELBOW (1)          | 51362-00         |
| 20   | SAMPLE INLET BOLCK (1)                               | 51365-00         |
| 21   | BALL VALVE, 1/4-IN. NPT, PVC (1)                     | 51395-00         |
| 22   | STRAINER HOUSING, 3/4-IN WITHOUT FILTER (1)          | 51396-00         |
| 23   | FILTER ELEMENT, 450 MESH(1)                          | 51397-00         |
| 24   | TEFLON THREAD TAPE                                   | 70608-00         |