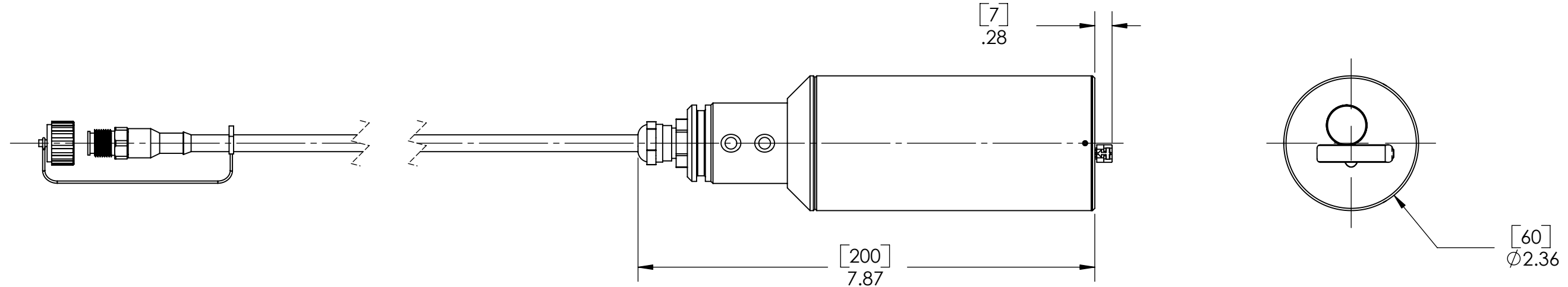
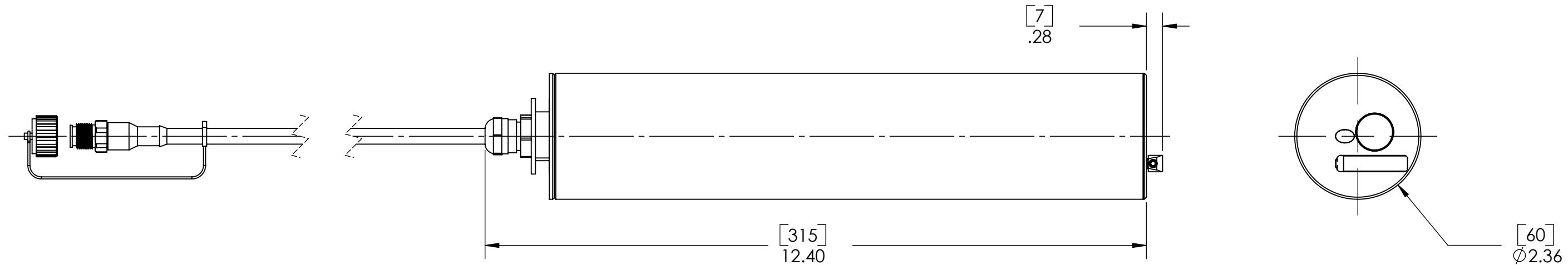


NOTES:  
1. ALL DIMENSIONS ARE IN INCHES [MILLIMETERS].

REVISION		
REV	DESCRIPTION	APPROVED
A	PRODUCTION RELEASE	



**SOLITAX sc MODELS T-LINE, TS-LINE, HS-LINE FOR IMMERSION IN OPEN TANKS**



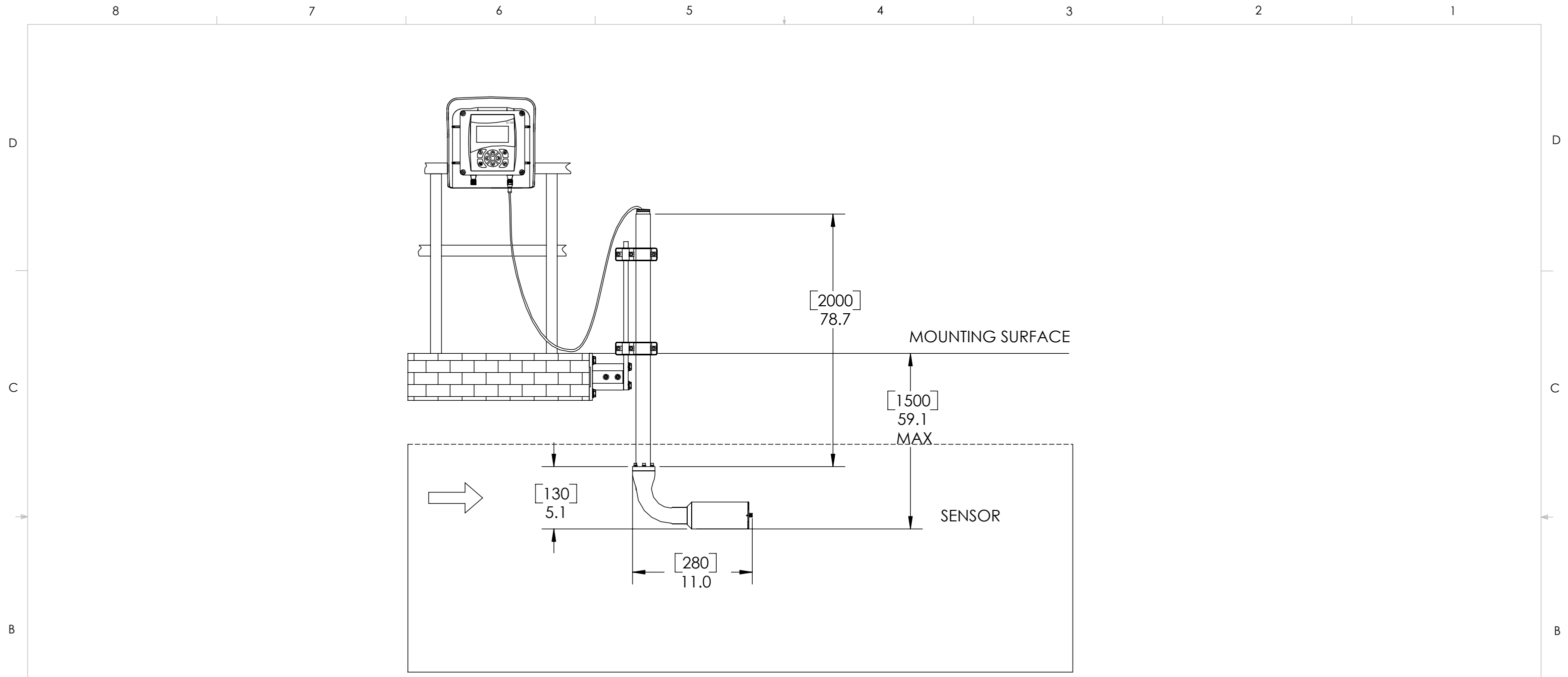
**SOLITAX sc MODELS INLINE AND HIGHLINE SENSORS FOR INSERTION IN PIPES**

**GENERAL INFORMATION:**

- MEASURING RANGE:  
T-LINE TURBIDITY: 0.000 - 4000 FNU/NTU  
TS-LINE, INLINE TURBIDITY: 0.001 - 4000 FNU/NTU; TSS CONTENT: 0.001-50 g/l  
HS-LINE, HIGHLINE TURBIDITY, 0.001-4000 FNU/NTU; TSS CONTENT: 0.001-150 g/l TSS
- CABLE LENGTH: 10 M (33 ft) STANDARD. OPTIONAL EXTN. CABLES AVL. IN 25, 50, 100 ft UPTO 100 m.
- AMBIENT TEMPERATURE: > 0 TO +40 °c.
- PRESSURE RANGE: ≤ 6 bar (87 psi).
- FLOW VELOCITY: MAX. 3 m/s (9.8 ft/s)
- WEIGHT: APPROX. 26 Kg (57.2 lb) INCLUDES DISPLAY UNIT, SENSOR, PIPE INSTALLATION FITTINGS.

NOTICE--HACH COMPANY CLAIMS PROPRIETARY RIGHTS IN THE INFORMATION DISCLOSED ON THIS DRAWING. IT IS ISSUED IN CONFIDENCE FOR ENGINEERING INFORMATION ONLY AND MAY NOT, IN WHOLE OR IN PART, BE USED TO MANUFACTURE ANYTHING, WHETHER OR NOT SHOWN HEREON, REPRODUCED OR DISCLOSED TO ANYONE WITHOUT DIRECT PERMISSION FROM HACH COMPANY.

MATERIAL	UNLESS OTHERWISE SPECIFIED:  DIMENSIONS ARE IN INCHES TOLERANCES: .X = ± .XX = ± .XXX = ± ANGLES = ±	NAME	DATE		HACH COMPANY 5600 LINDBERGH DR. LOVELAND, CO. 80539		
		DRAWN	TCS			11/16/06	
INTERPRET GEOMETRIC TOLERANCING PER: ANSI Y14.5M 1994	DO NOT SCALE DRAWING	ENGINEER	TCS	11/16/06	TITLE: TRANSMITTAL, SOLITAX sc SENSOR		
		THIRD ANGLE PROJECTION				SIZE	DWG. NO.
					<b>B</b>	<b>LXG42387</b>	<b>A</b>
			SCALE: 1:2	WEIGHT:	SHEET 1 OF 3		



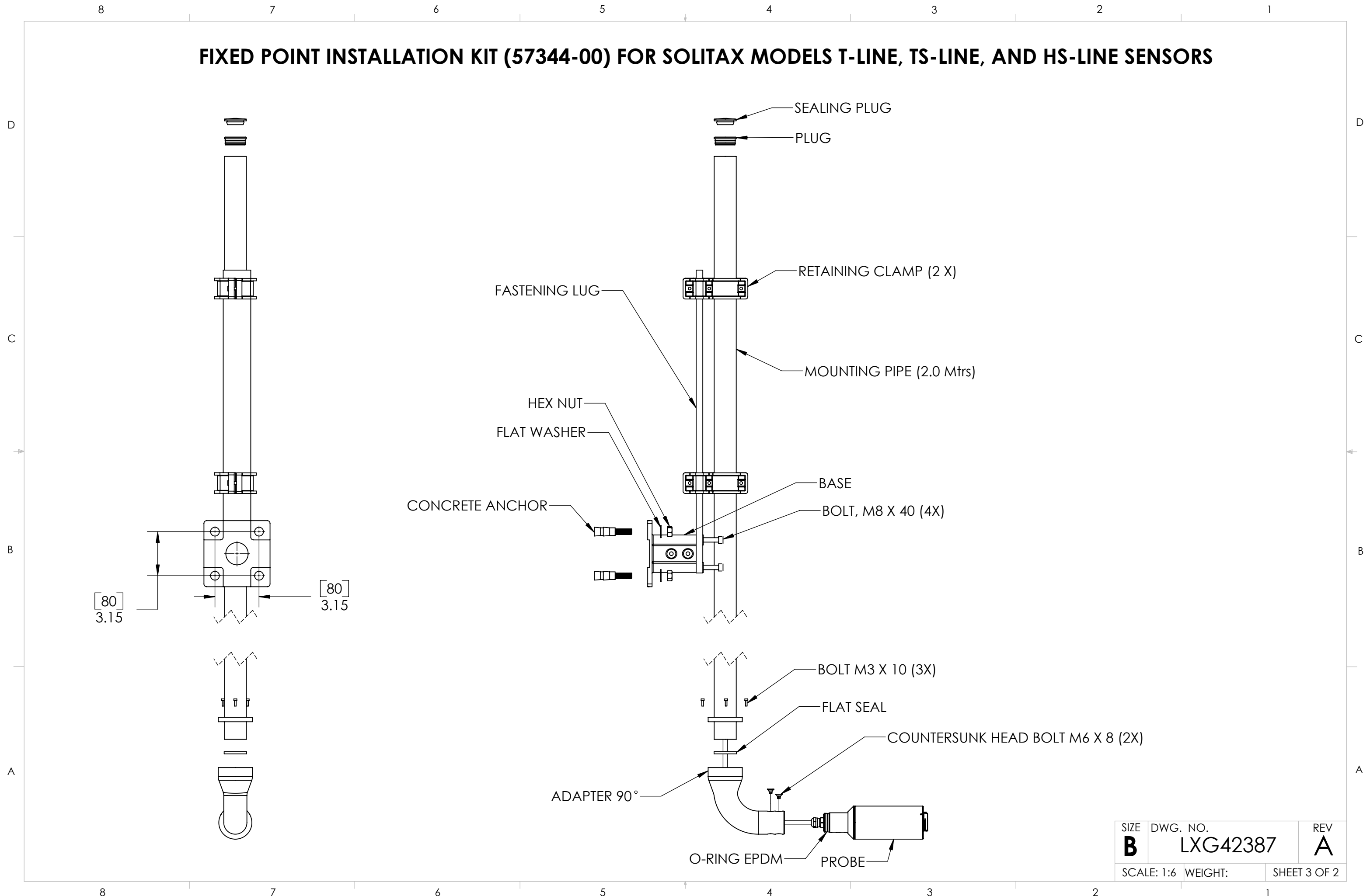
### INSTALLATION GUIDELINES

**NOTES:**

1. THE PROBE OPTICAL WINDOW MUST HAVE A GROUND CLEARANCE OF AT LEAST 30 cm (11.8 in.)
2. INSTALL THE PROBE WITH THE OPTICAL WINDOW FACING (DOWNSTREAM) IN THE DIRECTION OF THE FLOW TO MINIMIZE THE RISK OF FOULING.
3. AVOID INSTALLATION SITES WHERE AIR BUBBLES ARE INCONSISTENT. IF THIS NOT POSSIBLE, TRY MOVING THE PROBE SLIGHTLY OR ADJUSTING ITS ALIGNMENT TO MINIMIZE THE BUBBLE EFFECT.
4. PROTECT THE PROBE AGAINST THE ONCOMING FLOW OF LARGE OBJECTS, SUCH AS BRANCHES OR ICE AND AGAINST FLOW SURGES.
5. AVOID INSTALLING THE PROBE WITH THE OPTICAL WINDOW FACING INTO DIRECT LIGHT OR FACING A HIGHLY-REFLECTIVE SURFACE.

SIZE <b>B</b>	DWG. NO. <b>LXG42387</b>	REV <b>A</b>
SCALE: 1:2	WEIGHT:	SHEET 2 OF 2

# FIXED POINT INSTALLATION KIT (57344-00) FOR SOLITAX MODELS T-LINE, TS-LINE, AND HS-LINE SENSORS



SIZE <b>B</b>	DWG. NO. <b>LXG42387</b>	REV <b>A</b>
SCALE: 1:6	WEIGHT:	SHEET 3 OF 2