

POWER REQUIREMENTS:

- PROVIDED BY FIELD TRANSMITTER OR THRU GATEWAY

TEMPERATURE:

- OPERATING: 0 TO 40 °C (32 TO 104 °F)
- STORAGE: 0 TO 60 °C (32 TO 140 °F)

ENVIRONMENTAL RATING:

- ENCLOSURE: STAINLESS STEEL, IP68
- POLLUTION DEGREE: 2 (SENSOR), 4 (INSTALLATION ENVIRONMENT)
- PROTECTION CLASS: III

DEPTH:

- 10m (32.8 FT) MAXIMUM

MAX PRESSURE:

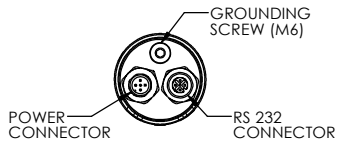
- 3 BARS

pH OF WATER:

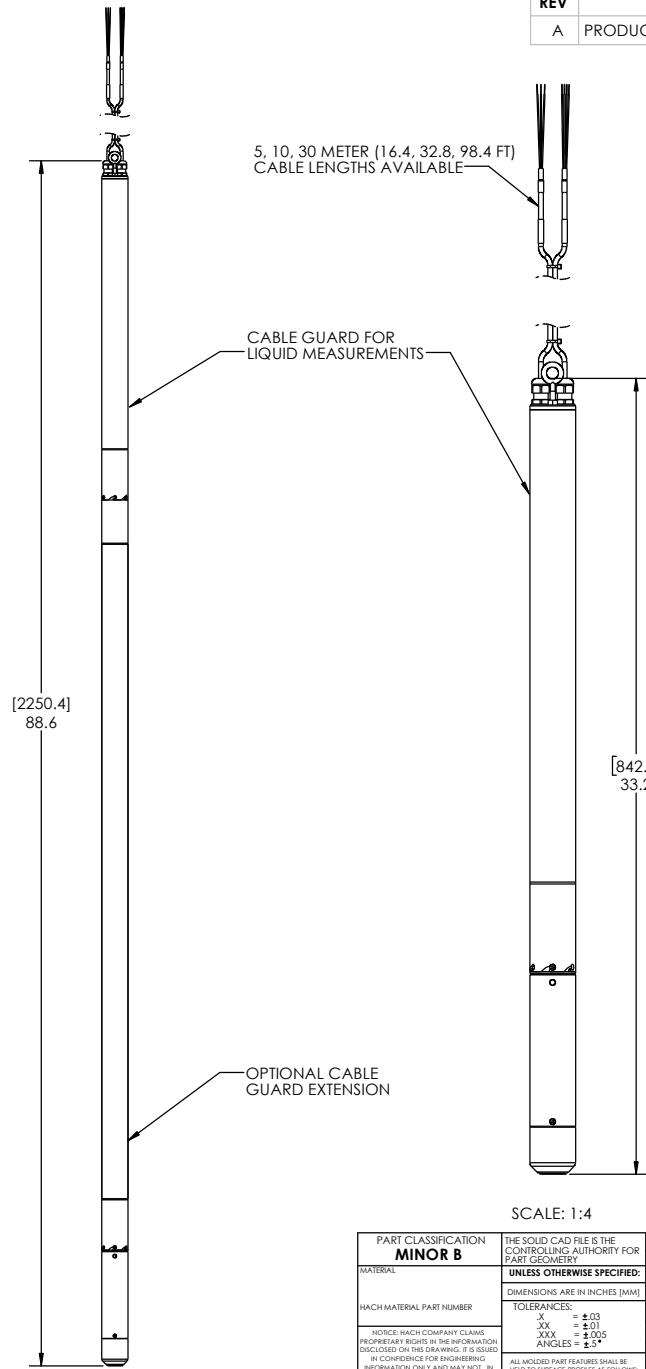
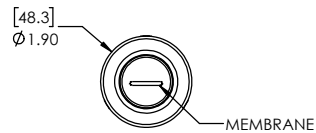
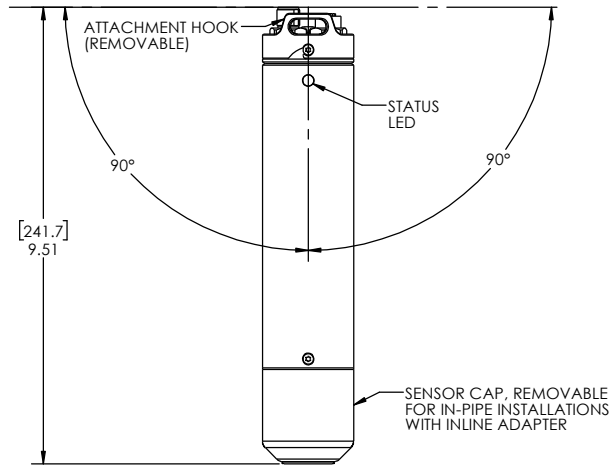
- pH 9 MAXIMUM

WEIGHT:

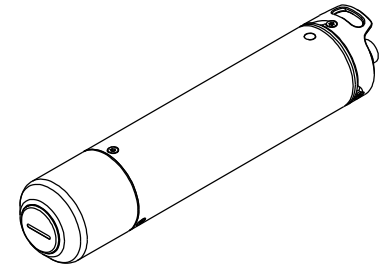
- 1.36 kg (3.0 lbs)



SENSOR STORAGE AND MOUNTING ORIENTATION



REVISION			
REV	DESCRIPTION	ECO #	DATE
A	PRODUCTION RELEASE		04/05/2023



SCALE: 1:4

SCALE: 1:7

PART CLASSIFICATION MINOR B	THE SOLID CAD FILE IS THE CONTROLLING AUTHORITY FOR PART GEOMETRY UNLESS OTHERWISE SPECIFIED:	ENGINEER E. KARLSEN 02/21/2023	NAME R. LUTHER 2/22/2023	DATE 4/5/2023	HACH COMPANY 5600 LINDBERGH DR. LOVELAND, CO. 80538
MATERIAL	DIMENSIONS ARE IN INCHES (MM)	DRAWN	CHECKED	PRODUCTION	
HACH MATERIAL PART NUMBER	TOLERANCES: X = ±.03 XX = ±.01 XXX = ±.005 ANGLES = ±5°	NOT CHECKED		Nicholas Collison	INTERPRET GEOMETRIC TOLERANCING PER: ANSI Y14.5M, 1994
NOTICE: HACH COMPANY CLAIMS PROPRIETARY RIGHTS IN THE INFORMATION DISCLOSED ON THIS DRAWING. IT IS ISSUED IN CONFIDENCE FOR ENGINEERING INFORMATION ONLY AND MAY NOT BE USED TO MANUFACTURE ANYTHING, WHETHER OR NOT SHOWN HEREON. REPRODUCED OR DISCLOSED TO ANYONE WITHOUT DIRECT PERMISSION FROM HACH COMPANY.	ALL MOLDED PART FEATURES SHALL BE FIED TO SURFACE PROFILES AS FOLLOWS: 2012 FOR FEATURES < 4.0" 2025 FOR FEATURES > 4.0" - 10.0" 2042 FOR FEATURES > 10.0"	THIRD ANGLE PROJECTION			SIZE: DWG. NO. C LXV449.99.87
DO NOT SCALE DRAWING				SCALE: 1:2	SHEET 1 OF 1