

PROGNOSYS FOR NITRATAX sc

Eliminate last-minute maintenance emergencies.

PROGNOSYS is a predictive diagnostic system that allows you to be proactive in your maintenance, by alerting you to upcoming instrument issues. Know with confidence whether changes in your measurements are due to changes in your instrument or your water.



Measurement Indicator

The measurement indicator monitors the instrument's components and uses that information to alert the user to upcoming instrument needs before measurements become questionable.



Service Indicator

The service indicator tracks the number of days until the instrument will require maintenance or service.



MAINTENANCE REQUIRED



Measurement Indicator

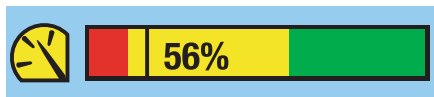
- Measurement and/or reference light beam readings are extremely low
- Light reading from the reference light beam is lower than measurement light beam (negative nitrate reading)
- Light beam readings indicate extremely high nitrate concentrations, high TSS
- An LED is not functioning
- Wiper blade is stuck or blocking window
- The flash lamp may need to be replaced
- Water in sensor
- Any instrument error



Service Indicator

1 day or less remaining until the next recommended maintenance task

MAINTENANCE PENDING



Measurement Indicator

- Measurement and/or reference light beam readings are approaching the lower limit
- Light reading from reference light beam is above expected values
- Light beam readings indicate potentially high nitrate concentrations, high TSS
- Wiper blade may need to be replaced
- Increased moisture detected in sensor
- Flash lamp is beginning to wear
- Any instrument warning



Service Indicator

2–14 days remaining until the next maintenance task (user adjustable)

MAINTENANCE PERFORMANCE



Measurement Indicator

- UV light and detection mechanism are in good condition; measurement and/or reference light beam readings are within an acceptable range
- Light beam readings are within the expected range
- Wiper motor in good condition
- Wiper blade in good condition
- No wiper blade errors
- No moisture detected in sensor
- Flash lamp is in good condition



Service Indicator

7–14 days remaining until the next maintenance task (user adjustable)

Many of the parameters and tasks considered for the maintenance indicator will also be displayed through the service indicator if the related instrument components require maintenance soon.