



DOC022.53.80073

# **MP-Dock and MP DataLink Computer Interface**

USER MANUAL

October 2009, Edition 1



# Table of Contents

---

Section 1 General information .....	5
1.1 Safety information .....	5
1.1.1 Precautionary labels .....	5
1.2 Specifications .....	5
1.3 Overview .....	5
1.4 System requirements .....	6
Section 2 MP DataLink installation .....	7
2.1 Uninstall previous versions .....	7
2.1.1 Windows users .....	7
2.1.2 Mac OS X users .....	7
2.2 Windows installation .....	7
2.2.1 Install the executable and support files .....	7
2.2.2 USB serial converter installation .....	10
2.2.3 USB port driver installation .....	14
2.2.4 Installation without an internet connection .....	15
2.3 Mac OS X installation .....	15
2.3.1 Install executable and support files .....	16
2.3.2 Install the MP-Dock device driver .....	19
Section 3 Enable data transfer .....	25
3.1 Launch MP DataLink software .....	25
3.1.1 Windows launch .....	25
3.1.2 Mac OS X launch .....	26
3.2 Select port preference .....	26
3.3 Enable MP series meter communication .....	27
3.4 Access to MP DataLink commands .....	28
Section 4 MP DataLink menus .....	29
4.1 File menu .....	29
4.1.1 Load (Ctrl/Command Key + L) .....	29
4.1.1.1 Current data .....	30
4.1.2 Clear Data (Ctrl/Command Key + D) .....	31
4.1.3 Save (Ctrl/Command Key + S) .....	31
4.1.4 Save As .....	32
4.1.4.1 CSV data format for spreadsheet applications .....	32
4.1.5 Print (Ctrl/Command Key + P) .....	33
4.1.6 Quit (Ctrl/Command Key + Q) .....	34
4.2 Edit menu .....	34
4.2.1 Preferences .....	35
4.2.1.1 Preferences buttons .....	36
4.2.2 Reference Information .....	36
4.3 MP Commands menu .....	36
4.3.1 Download Data .....	37
4.3.2 Set Date and Time .....	39
4.3.3 Erase Memory .....	39
4.3.4 Disconnect .....	40

## Table of Contents

---

4.4 Help menu .....	40
Section 5 Troubleshooting .....	41
Section 6 Contact Information .....	43
Section 7 Limited Warranty .....	45

# Section 1 General information


In no event will the manufacturer be liable for direct, indirect, special, incidental or consequential damages resulting from any defect or omission in this manual. The manufacturer reserves the right to make changes in this manual and the products it describes at any time, without notice or obligation. Revised editions are found on the manufacturer's website.

## 1.1 Safety information

Please read this entire manual before unpacking, setting up or operating this equipment.

Make sure that the protection provided by this equipment is not impaired, do not use or install this equipment in any manner other than that specified in this manual.

### 1.1.1 Precautionary labels

	<p>Electrical equipment marked with this symbol may not be disposed of in European public disposal systems after 12 August of 2005. In conformity with European local and national regulations (EU Directive 2002/96/EC), European electrical equipment users must now return old or end-of life equipment to the Producer for disposal at no charge to the user.</p> <p><b>Note:</b> For return for recycling, please contact the equipment producer or supplier for instructions on how to return end-of-life equipment, producer-supplied electrical accessories, and all auxiliary items for proper disposal.</p>
---	---

## 1.2 Specifications

Specifications are subject to change without notice.

MP-Dock specifications	Details
Dimensions	207.01 x 76.20 x 39.37 mm (8.15 x 3.0 x 1.55 in.)
Length of attached USB cable	787.4 mm (31 in.)
Weight	285.76 g (10.08 oz.)
Warranty	Two years from date of shipment (see <a href="#">Section 7 on page 45</a> )

## 1.3 Overview

The MP-Dock allows the user to transfer data (stored in the MP series meter) to the MP DataLink application. The MP series meter sits on top of the MP-Dock ([Figure 1](#)). Data is transferred through an infra red (IR) port on the bottom of the MP series meter (refer to document DOC022.XX.80072). The data moves through the MP-Dock to the computer USB port.

**Note:** Install the MP DataLink software before the MP-Dock is connected to the computer.



Figure 1 MP series meter and MP-Dock configuration

### Features of the MP-Dock:

- Uses an infra red (IR) port to transfer data in a simple and reliable way.
- Uses the software application that is available from a CD or from [www.hach.com](http://www.hach.com).
- Operates the MP DataLink application on the following systems: Windows XP, Windows Vista and Macintosh (Mac) OS X 10.0–10.4.11.
- Organizes data by record number, parameter, value, measurement unit, temperature and date/time stamp.
- Exports to Microsoft® Office software through universal formatting (.csv) files.
- Allows the user to set the MP meter time and date through the MP DataLink software.
- Clears meter memory through the MP DataLink software.
- Receives power through a USB port (no batteries are needed).

## 1.4 System requirements

Requirements are subject to change without notice.

System requirements	
Computer operating system	Microsoft Windows® XP™, Windows Vista™ or Mac OS X 10.0–10.4.11 <b>Note:</b> Windows Vista does not save the user settings.

# Section 2 MP DataLink installation

---

Perform the following steps to install the MP DataLink computer interface.

## 2.1 Uninstall previous versions

If applicable, uninstall previous versions of the software before this version is installed.

**Note:** Save all work and exit all applications prior to the installation of this software.

### 2.1.1 Windows users

1. Click **Start**.
2. Select **Control Panel**.
3. Select **Add or Remove Programs**.
4. Scroll to the MP-Dock application.
5. Click **Remove**. There is no need to restart the computer.

### 2.1.2 Mac OS X users

1. Select **Go** in the Finder menu bar.
2. Select **Applications**.
3. Scroll to the MP DataLink folder.
4. Drag the folder to the trash.

## 2.2 Windows installation

**Note:** Install the MP DataLink software before the MP-Dock is connected to the computer.

Make sure to uninstall any previous versions of the software before the installation is performed (see [section 2.1](#)).

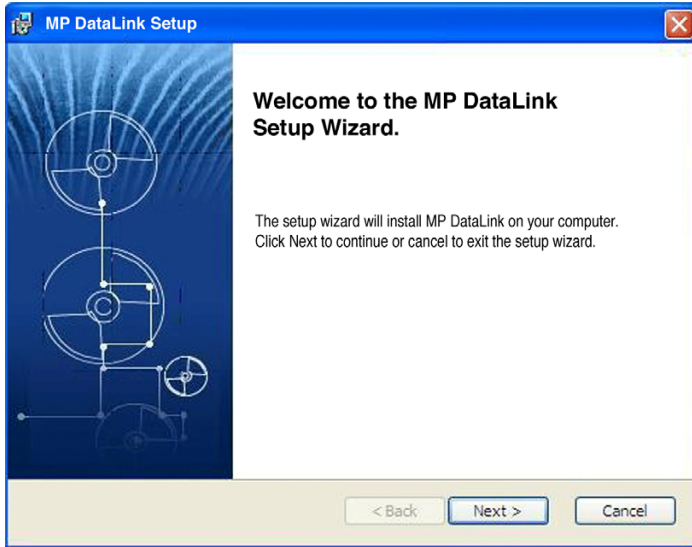
**Note:** Installation and use of MP DataLink requires user acceptance of the End User License Agreement (EULA).

### 2.2.1 Install the executable and support files

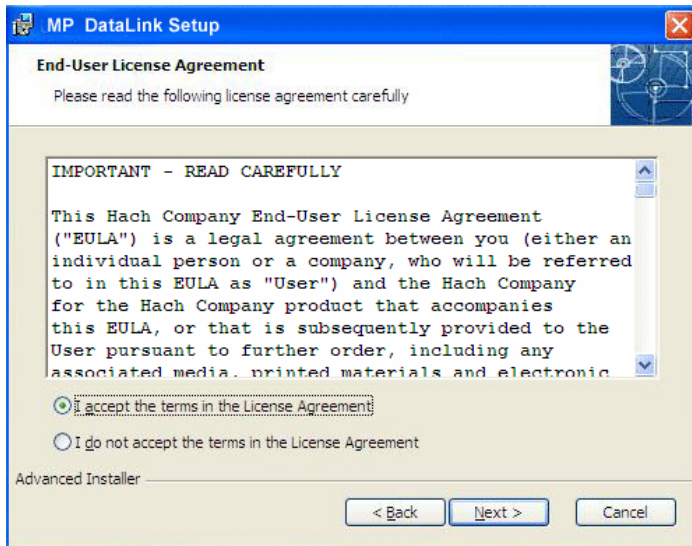
1. Place the MP DataLink software CD into the CD drive or download the MP DataLink application from [www.hach.com](http://www.hach.com).
2. If Auto install does not start, go to **Start, My Computer, MP DataLink**.
3. Double-click the **MP DataLink** icon under Devices with Removable Storage.

## MP DataLink installation

- Click **NEXT** in the MP DataLink Setup Wizard Welcome window to begin the software installation.



- Read the End User License Agreement (EULA). If the terms are acceptable, check the "I accept the terms in the License Agreement" box and click **NEXT**.

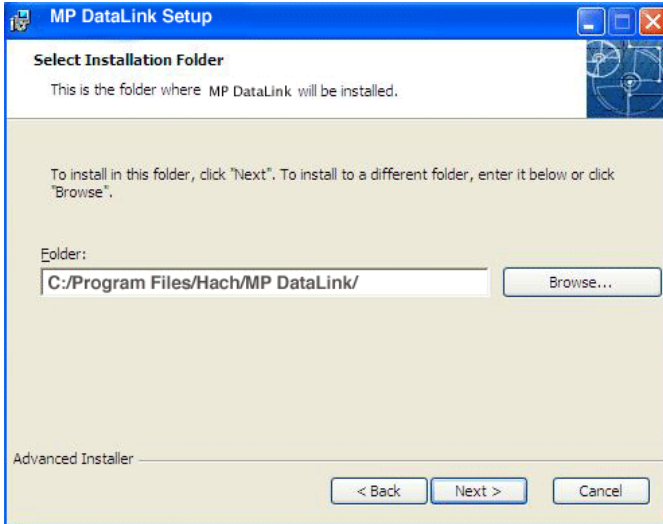




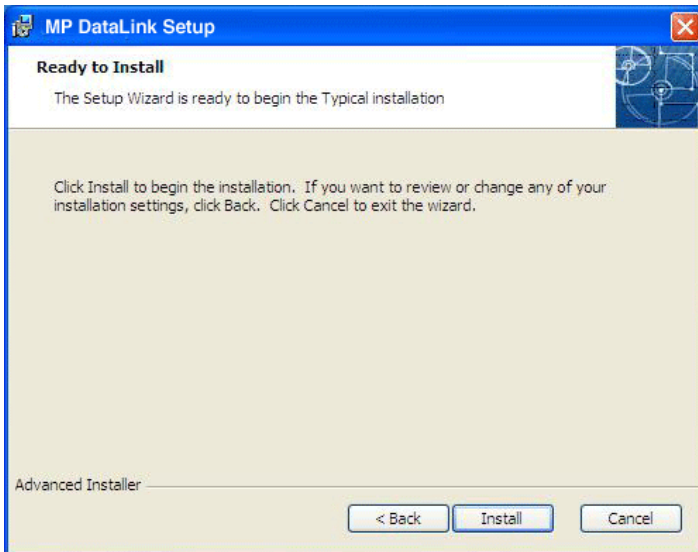
## MP DataLink installation

---

- Click **NEXT** to accept the file location for the install. (Browse to choose an alternative location.)



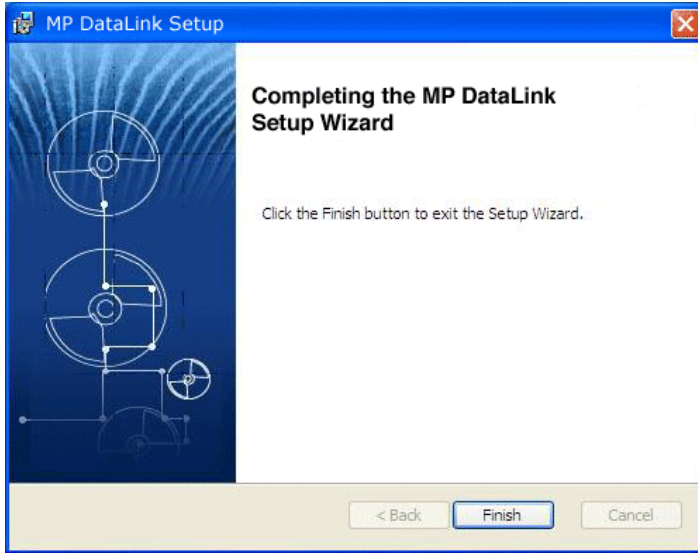
- Click **INSTALL** in the Ready to Install window. A Status bar indicates the installation progress.



## MP DataLink installation

---

8. Click **FINISH** in the Completing Setup Wizard window.



### 2.2.2 USB serial converter installation

**Note:** If the Found New Hardware Wizard does not appear, omit this section and go to [Section 3 Enable data transfer on page 25](#).

1. Insert the USB connection cable into any USB port on the computer.
2. The Found New Hardware Wizard prompts the user to search for drivers. Check the box to search for drivers.

## MP DataLink installation

---

### 3. Click NEXT.

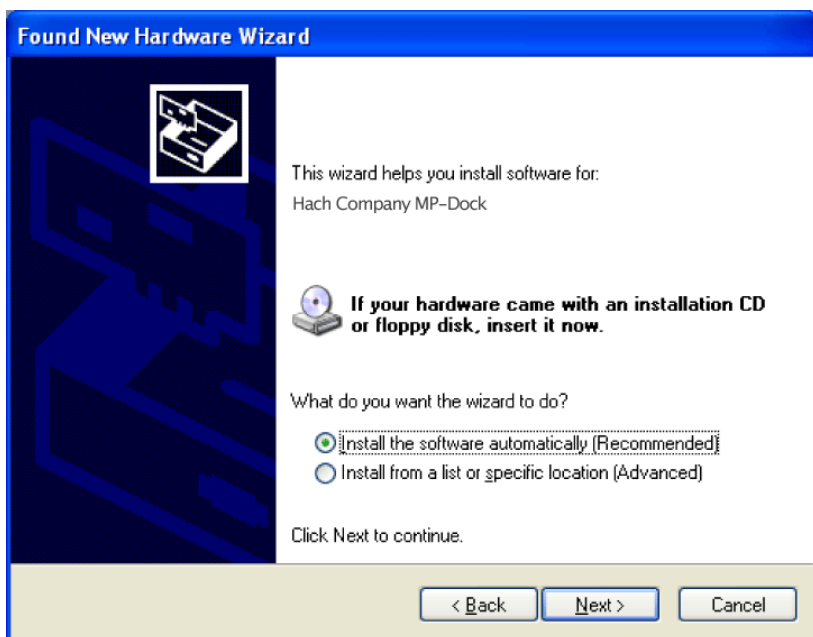
**Note:** If a version of this software was previously installed, the drivers might not need to be installed.



## MP DataLink installation

---

4. In the Found New Hardware Wizard, select **Install the software automatically**. The wizard searches for the proper driver and finds the USB Serial Converter.

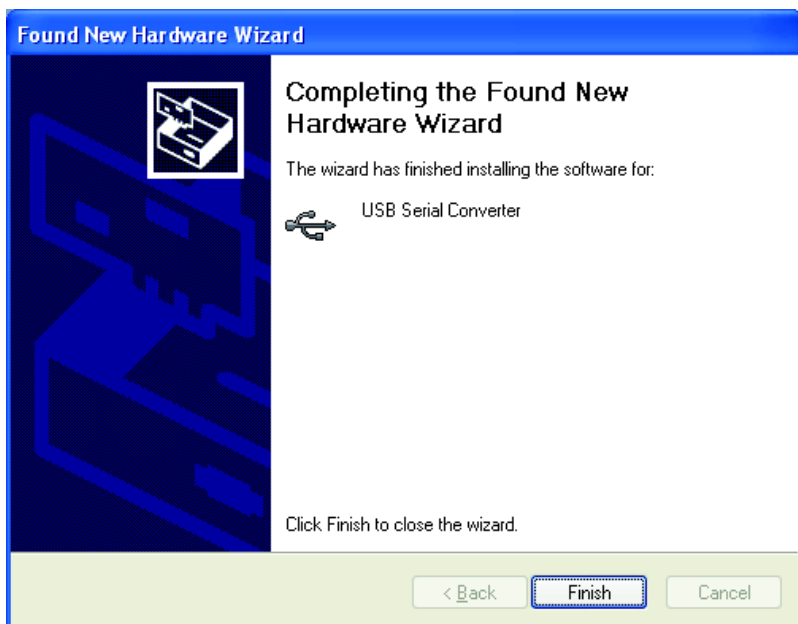


5. Click **NEXT**.

## MP DataLink installation

---

6. Click **FINISH** to complete the installation for the USB serial converter.



### 2.2.3 USB port driver installation

The Found New Hardware Wizard prompts a search for the USB serial port driver.

1. Select **Install the software automatically**. The wizard searches for the proper driver\* and finds the USB Port Converter.



2. Click **NEXT**.

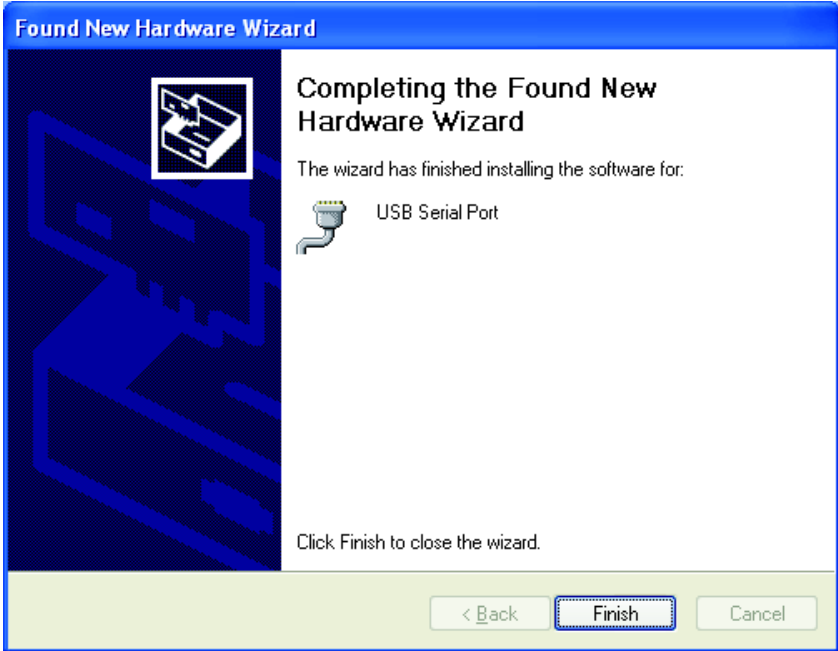
---

\* Administrator rights may be required to install the drivers.

## MP DataLink installation

---

3. Click **FINISH** to complete the installation for the USB port converter. (The operating system may request a restart.) The new hardware is ready to use.



### 2.2.4 Installation without an internet connection

If no internet connection is available, install the driver from the MP DataLink CD.

1. Place the MP DataLink software CD into the CD drive.
2. Select **Install from a list or specific location**.
3. Click **NEXT**.
4. Select **Search for the best driver in these locations**.
5. Check the **Search removable media box**.
6. Click **NEXT**.

### 2.3 Mac OS X installation

**Note:** *Stuffit expander may be required. Download it from this site:  
<http://my.smithmicro.com/mac/stuffit/expander.html>.*

**Note:** *Install the software before the MP-Dock is connected to the Mac computer.*

Perform the following steps to install the MP DataLink computer interface on a Mac computer.

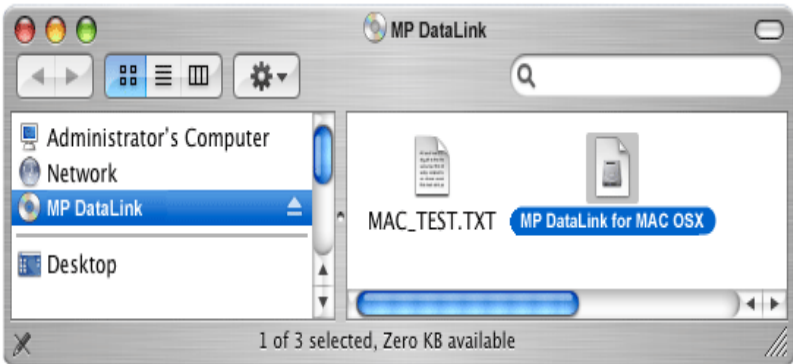
## MP DataLink installation

### 2.3.1 Install executable and support files

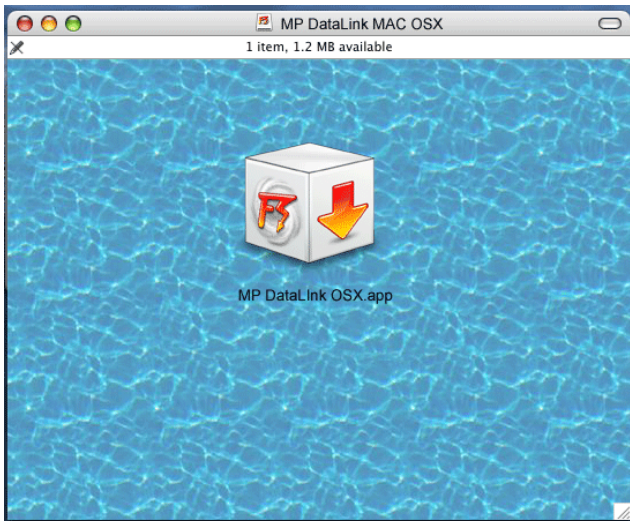
1. Place the MP DataLink software CD into the CD drive or download the MP DataLink application from [www.hach.com](http://www.hach.com).
2. Double-click the **MP DATALINK CD** icon.



3. Double-click the **MP DATALINK FOR MAC OS X** executable icon on the MP DataLink CD. Click **AGREE** in the EULA window.



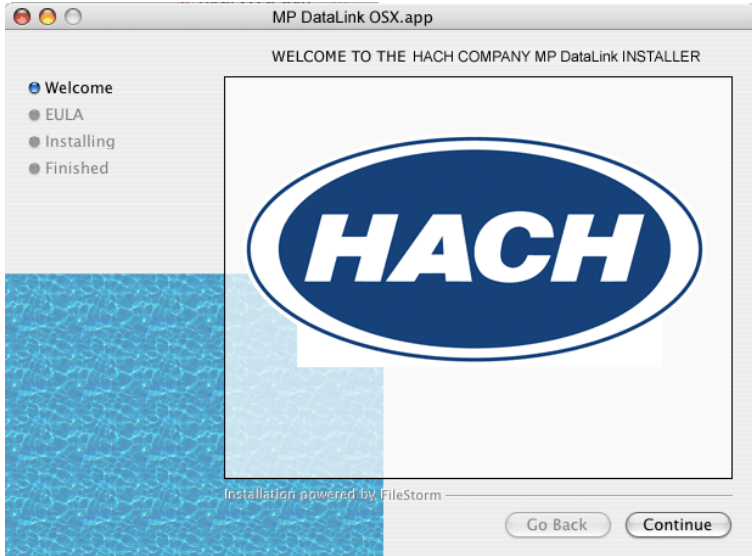
4. Double-click the **MP DATALINK OSX.APP** icon.



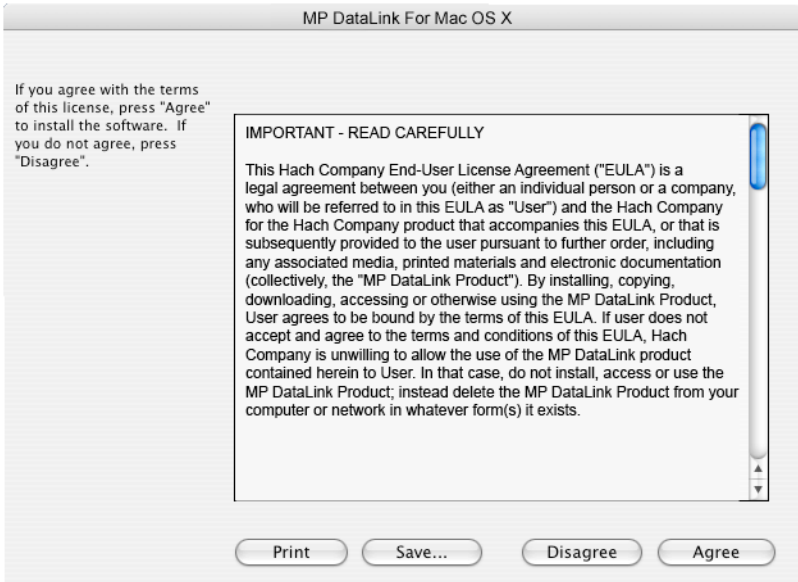


## MP DataLink installation

- Click **CONTINUE** on the Welcome to the Mac Installer window.

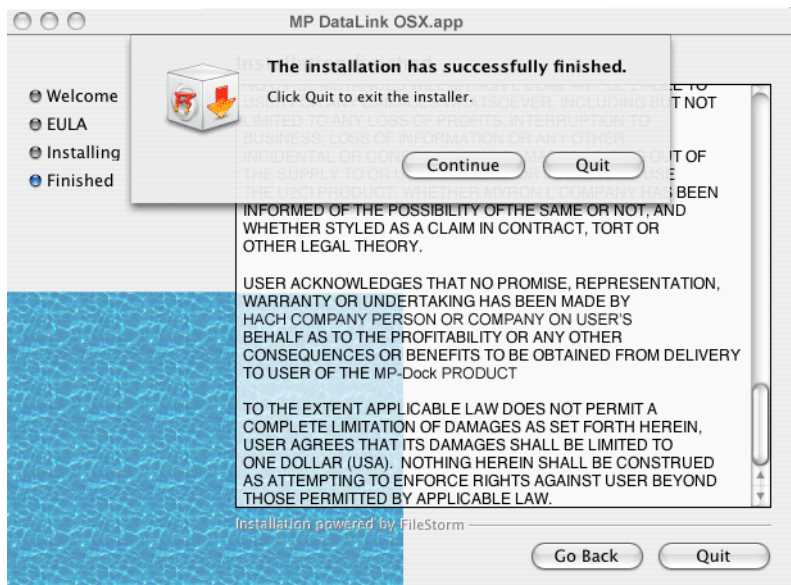


- Read the EULA. If the user does not agree to the EULA, the software cannot be installed.
- Click **PRINT** or **SAVE** to print or save a copy of the EULA for record keeping.
- Click **INSTALL** and then click **AGREE** in the License Agreement dialog box.

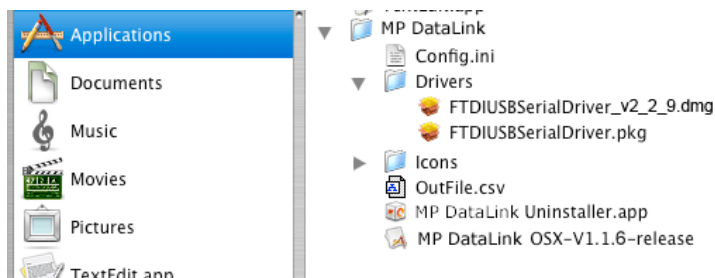


## MP DataLink installation

- Click **QUIT** to complete the software installation process.
- Close the MP DataLink Mac OS X window.



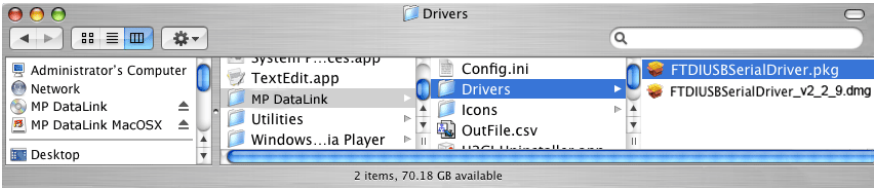
The software and drivers are now copied to a MP DataLink folder under Applications.



## MP DataLink installation

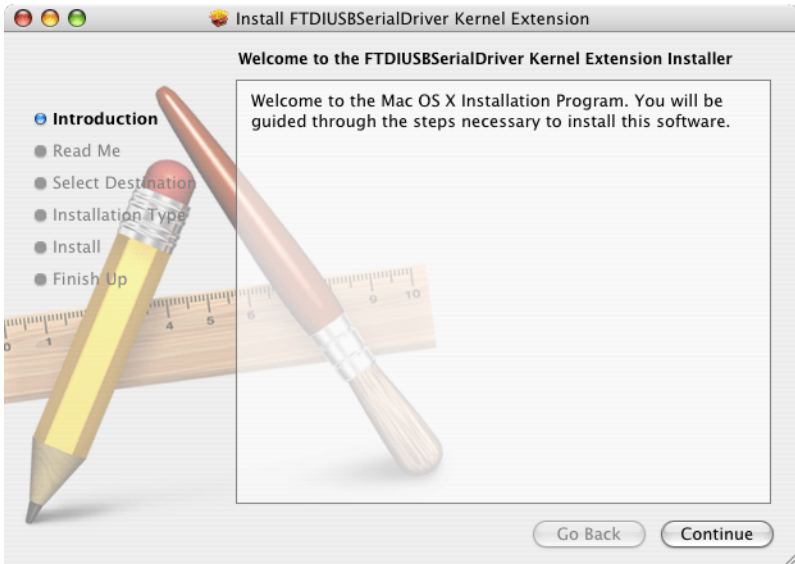
### 2.3.2 Install the MP-Dock device driver

1. Click the **APPLE** icon in the far left of the Finder menu bar.
2. Select **About This Mac** and check if the Mac has a G-series or an Intel processor.
3. Click **Go** in the Finder menu bar and then **Applications**.
4. Scroll down to the MP DataLink folder and open it.
5. Select and open the Drivers folder.



6. Select a processor:
  - If the computer runs on an Intel processor, double-click the **FTDIUSBSerialDriver\_v2\_2\_9.dmg** file.
  - If your computer runs on a G-series processor, double-click the **FTDIUSBSerialDriver.pkg** file.

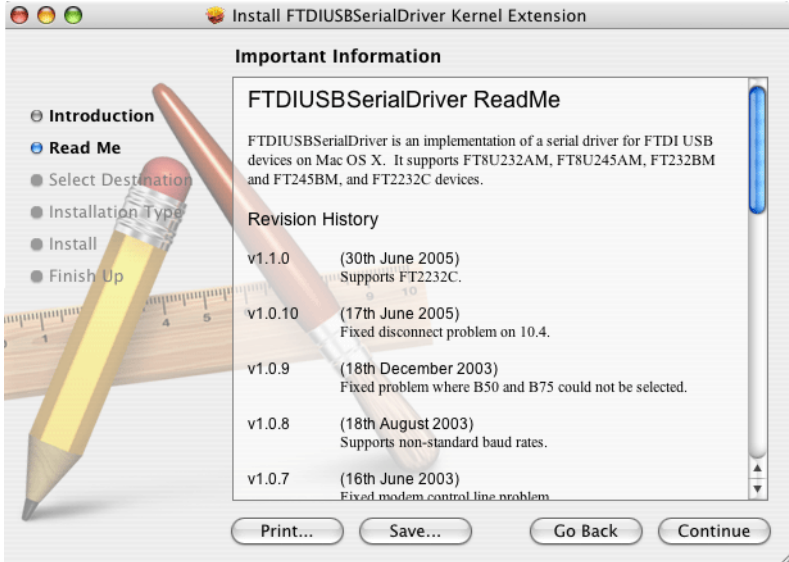
The driver installation software launches, and the Install FTDIUSBSerialDriver Kernel Extension window opens.



7. Click **CONTINUE** on the introduction window to install the FTDIUSB Serial Driver Kernel Extension.

## MP DataLink installation

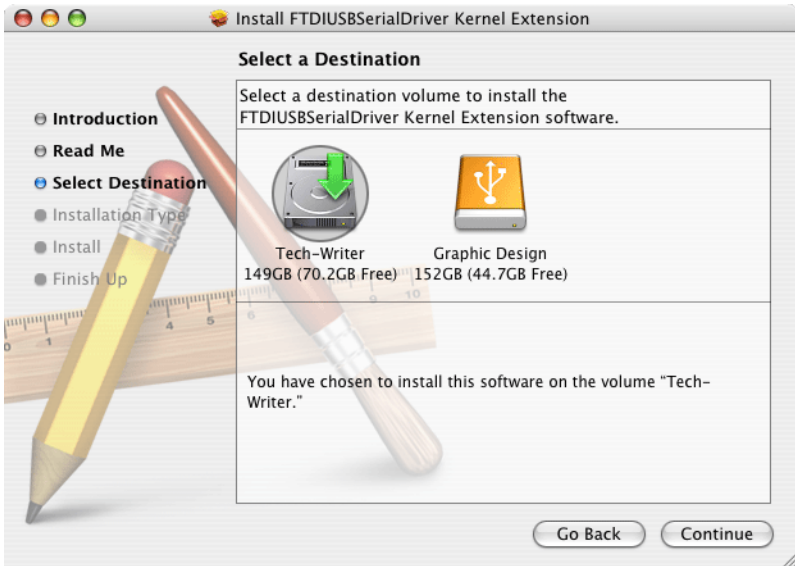
- Click **PRINT** or **SAVE** on the Readme window to keep important information about the serial number if desired.



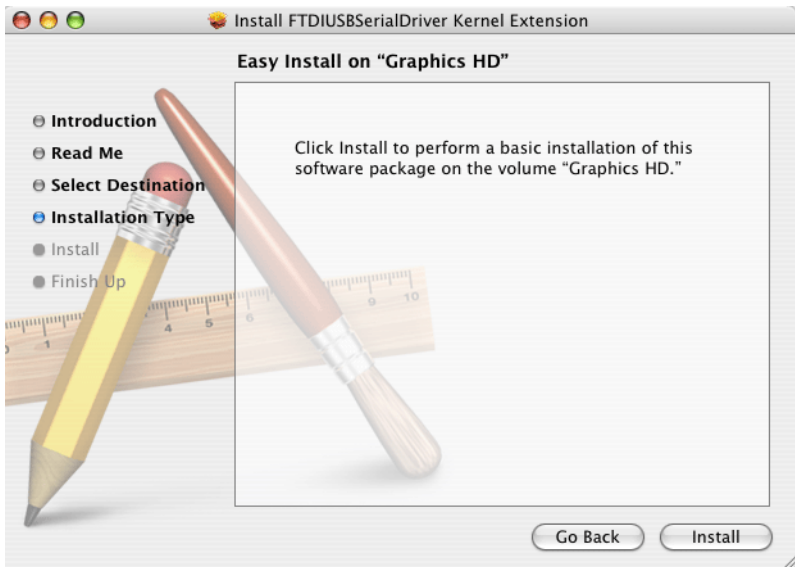
- Click **CONTINUE** to proceed with the driver installation.

## MP DataLink installation

10. On the Select a Destination window, select the hard drive as the destination.



11. Click **CONTINUE**.



## MP DataLink installation

---

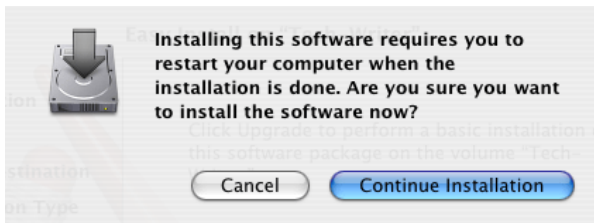
12. Click **INSTALL**. A prompt appears for a system password.



13. Enter the password and click **OK** to proceed with the USB driver installation on the hard drive.

*Note: Administrative rights are required to install the drivers on the computer.*

14. Click **CONTINUE INSTALLATION**.



## MP DataLink installation

15. Click **RESTART** to finish the USB driver installation on the hard drive. The operating system reboots and any unsaved work in other applications is lost.

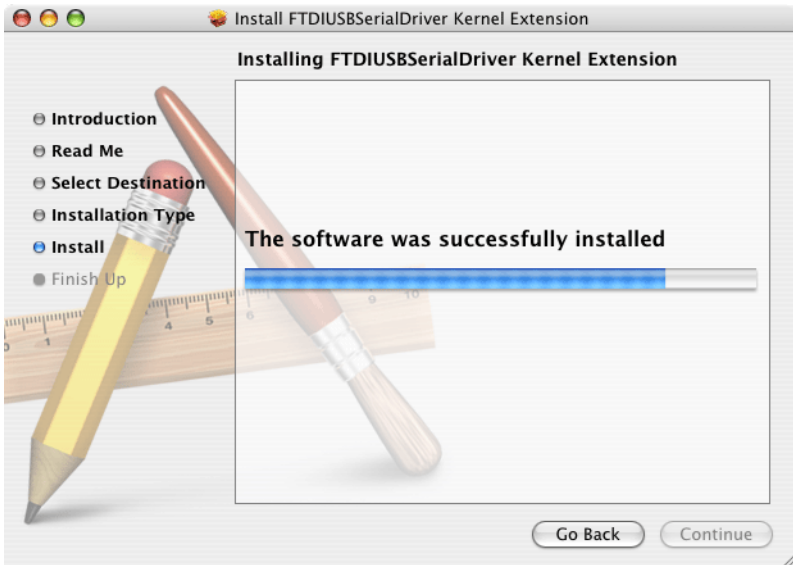
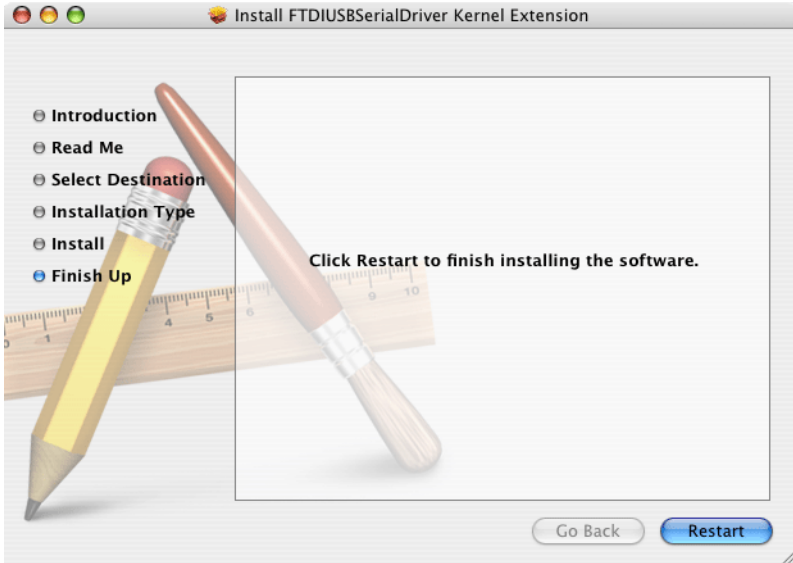


Figure 2 Install driver - successfully installed





# Section 3 Enable data transfer

**Important Note:** First connect the MP-Dock to any USB port on the computer so that the software recognizes the communication port.

Perform the following steps to enable data transfer between the MP meter, the MP-Dock and the MP DataLink application.

## 3.1 Launch MP DataLink software

To launch the software, choose the appropriate operating system section below.

### 3.1.1 Windows launch

To launch Windows, go to **Start, All Programs, MP DataLink**.

The desktop icon can also be used, if applicable.

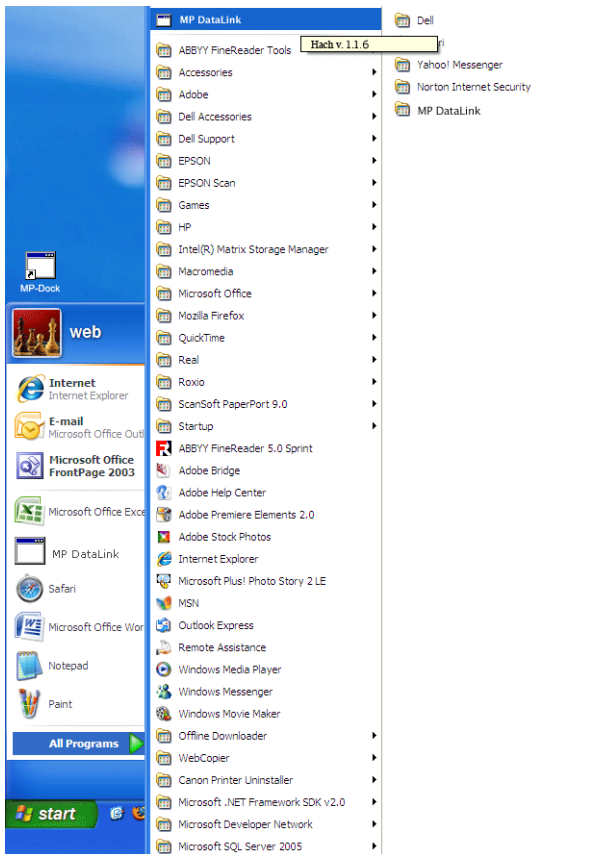


Figure 3 Launch Windows software

## Enable data transfer

---

### 3.1.2 Mac OS X launch

Follow the steps below to find the application:

1. Select **Go** from the Finder menu bar.
2. Click on **Applications**.

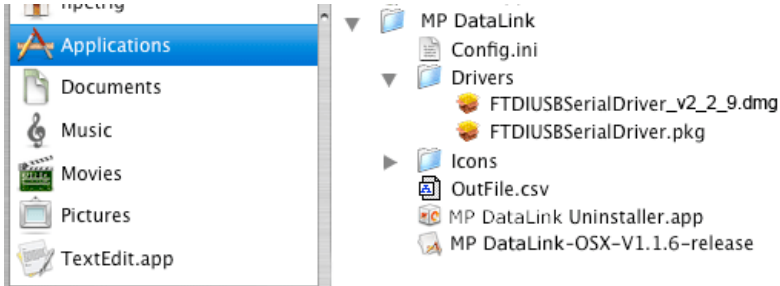


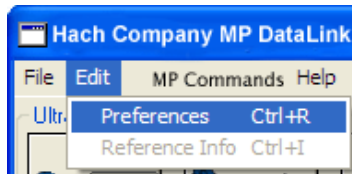
Figure 4 Launch Mac OS X software

3. Scroll down to the MP DataLink folder.
4. Open the folder and double-click **MP DataLink v.1.# release**.
5. Drag the MP DataLink v.1.# release icon to the system dock to create a shortcut on the system dock.
6. Right-click on the file and select **Make an Alias** to create a shortcut on the desktop.

### 3.2 Select port preference

To select a port:

1. From the MP DataLink application, open the Edit drop-down menu and select **Preferences**.

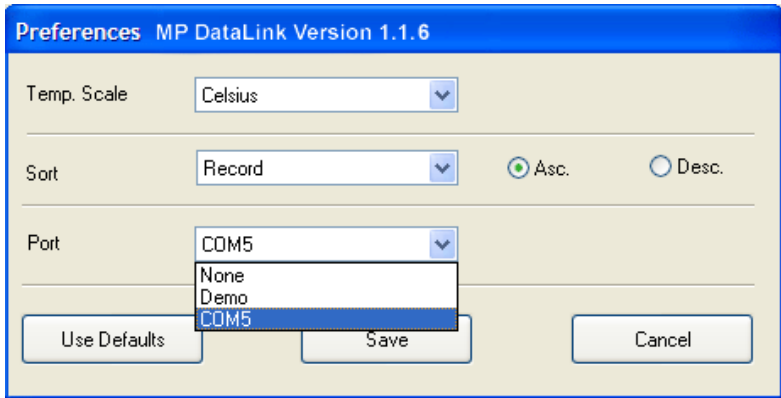


## Enable data transfer

---

2. Select an available port with the highest number in the Port drop-down menu.

**Note:** If only None and Demo appear, close the application, and re-open it. Go to Edit. Select **Preferences** and select the highest available port.



3. Click **SAVE**.

**Note:** Vista users must edit Port Preferences every time MP DataLink is launched.


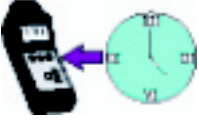


### 3.3 Enable MP series meter communication

To enable communication between the MP series meter, the MP-Dock and the MP DataLink application:

1. Set the MP series meter on the MP-Dock.
2. Press any measurement key to power up the meter.
3. Enable the PC On mode.
  - a. Press the **MR/DOWN** key and hold until PC OFF displays.
  - b. Press **CAL/MCLR**. The display may briefly indicate PC Ini and then PC On displays.


### 3.4 Access to MP DataLink commands

The user can use MP DataLink to send commands to the MP series meter. Use the command icons or the items located in the MP Commands drop-down menu to send the commands (see [section 4.3 on page 36](#)).

Icons	Command
	Download Data
	Set Date and Time
	Erase Memory
	Disconnect

# Section 4 MP DataLink menus

This section shows the MP DataLink menus and their functions.

**Note:** Functionality is the same for Windows and Mac operating systems. Screenshots show the Windows version. The parentheses next to a command show the keyboard shortcuts for Windows (Ctrl key plus a specific key) and Mac (Command key  plus a specific key).

The MP DataLink main window includes these menus: File, Edit, MP Commands and Help.

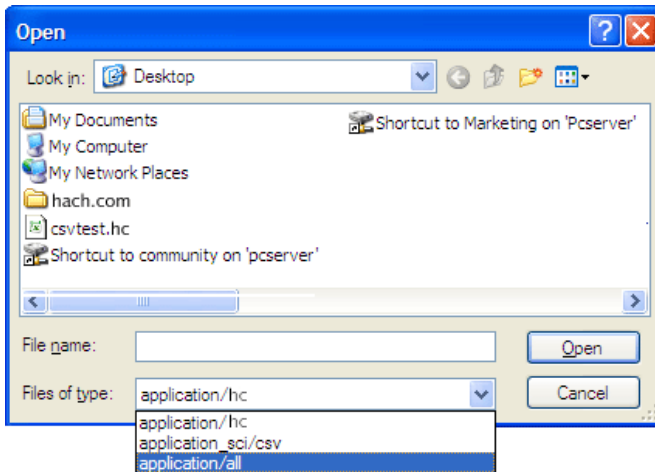
## 4.1 File menu

The File menu includes these commands: Load, Clear Data, Save, Save As, Print and Quit.

### 4.1.1 Load (Ctrl/Command Key + L)

This command allows the user to load a data file in the main window screen.

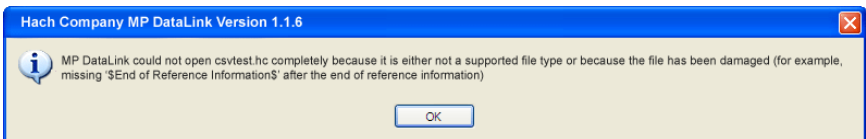
1. Go to the File menu and select **Load**. The standard Open dialog box appears.



2. Select a test file and click **OPEN** to load the file into the MP DataLink main menu.

**Note:** MP DataLink supports the .hc file format and the .csv file format.

**Note:** If a loading error occurs (e.g., wrong data file type), MP DataLink displays the following warning message:



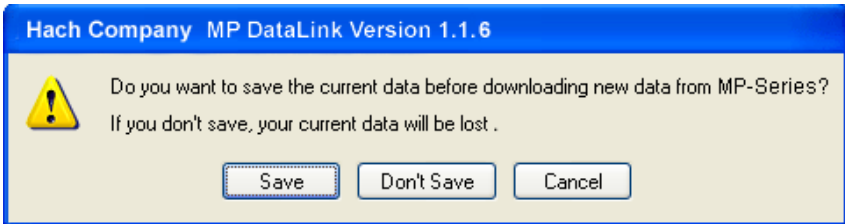
## MP DataLink menus

---

After the file loads, the filename displays in the top right corner of the MP DataLink window. Any reference information displays in the reference information field.

### 4.1.1.1 Current data

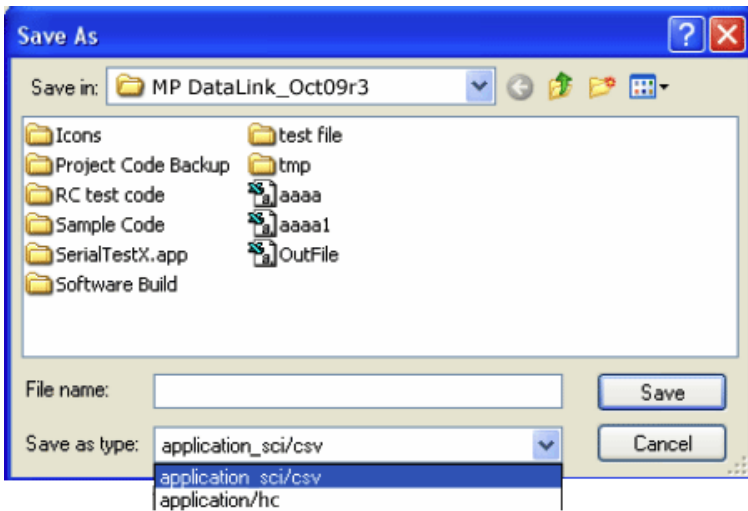
If a user chooses to load a data file and the current data is not saved, MP DataLink displays a warning message:



1. Select **SAVE**, **DON'T SAVE** or **CANCEL**.

*Note: Save As is the same as the Save window in Mac OS X.*

2. To save the file:
  - a. Select **SAVE**. The standard Save As pop up window opens.



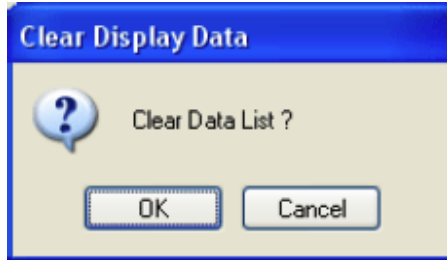
- b. Enter the file name, and click **SAVE**.
3. Click **DON'T SAVE** to discard the current data and load the selected data file.
  4. Click **CANCEL** to cancel the load operation. Current data does not change.

### 4.1.2 Clear Data (Ctrl/Command Key + D)

1. Go to the File menu and select **Clear Data** to clear current data from the MP DataLink main window. The file name and any reference information is also cleared.

*Note: When there is no data in the main window, Clear data is grayed out.*

A confirmation window opens.



2. Click **OK** to confirm. If data is not saved, MP DataLink prompts the user to save the data before it is cleared.

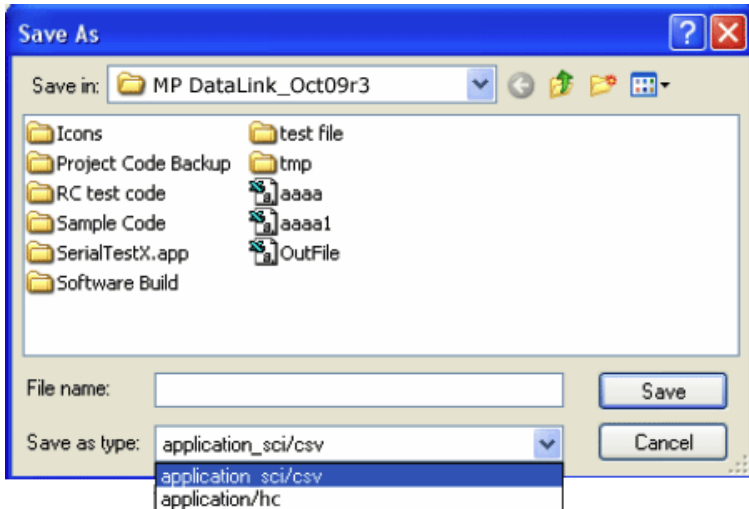
### 4.1.3 Save (Ctrl/Command Key + S)

Go to the File menu and select **Save**. This command saves the data in the .hc format, which is the shortened format that displays in the MP DataLink window and on the MP series meter display. This format allows the user to load the data back into the MP DataLink application at a later time.

### 4.1.4 Save As

*Note: In Mac OS X, this function is the same as the Save function.*

1. Go to the File menu and select **Save As**. The Save As window opens.



2. Save the data in either the .hc file format or the .csv file format.

#### 4.1.4.1 CSV data format for spreadsheet applications

Data saved in the CSV (comma separated values) format is saved in scientific notation. Perform the following steps to change these values to number format in Microsoft Excel®:

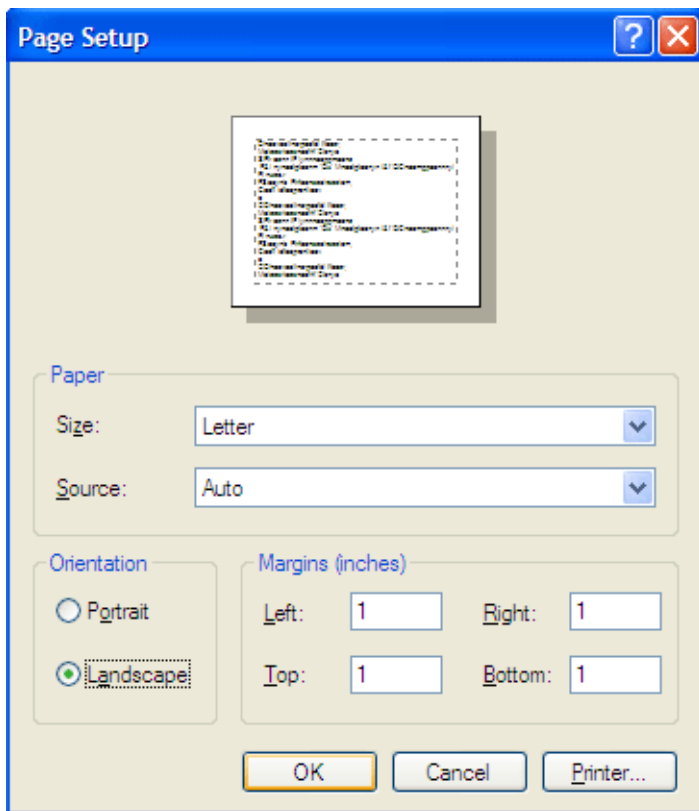
1. Select the cells that contain the reading values.
2. Click the **FORMAT** pull-down menu.
3. Select **CELLS**.
4. Select **NUMBER** from the Number tab.
5. Click **OK**.



### 4.1.5 Print (Ctrl/Command Key + P)

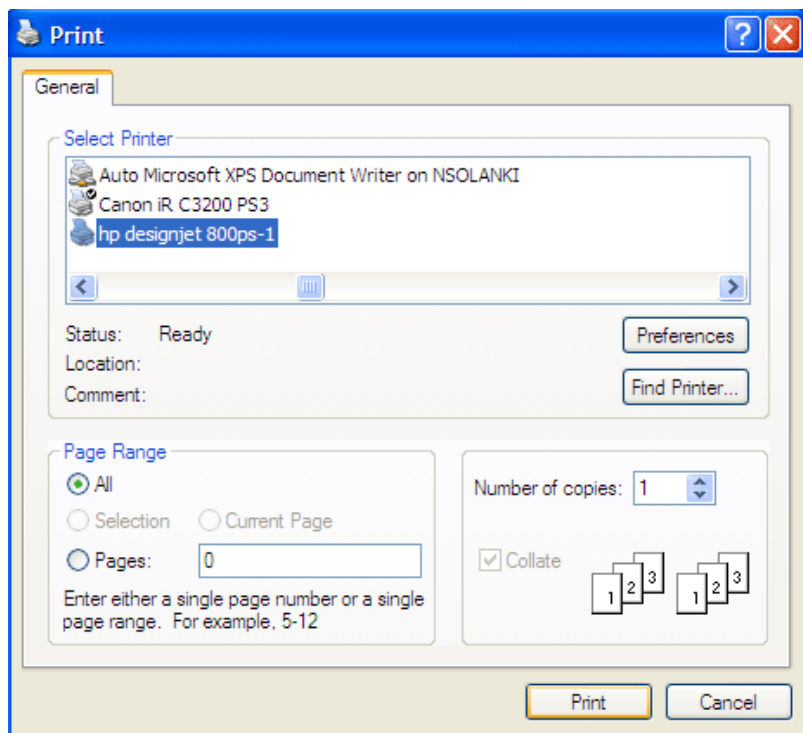
*Note: This menu item is grayed out when there is no data in the main window.*

1. Go to the File menu and select **Print**. The Page Setup window opens.



## MP DataLink menus

2. Select any printing preferences and click **OK**. The Print window opens.



3. Click **PRINT** to print the selected data list with its reference information and file name.

### 4.1.6 Quit (Ctrl/Command Key + Q)

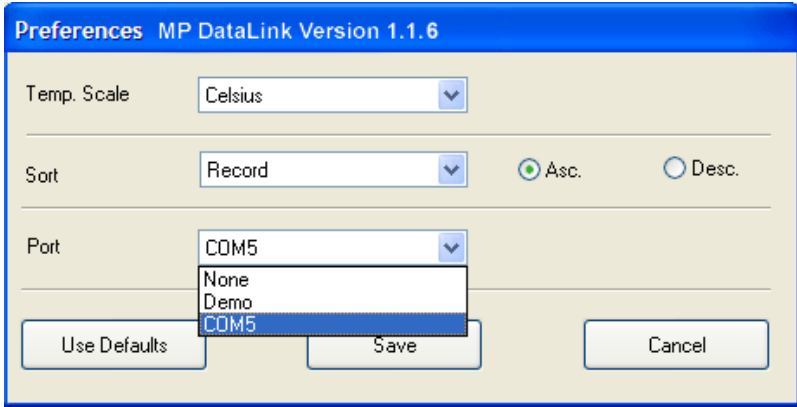
Go to the File menu and select **Quit** to close the MP DataLink application. If there is unsaved data in the main window, the user is prompted to save the data. This task can also be done if the user closes the main window of the MP DataLink application.

## 4.2 Edit menu

The Edit menu contains the Preferences and Reference Information items.

## 4.2.1 Preferences

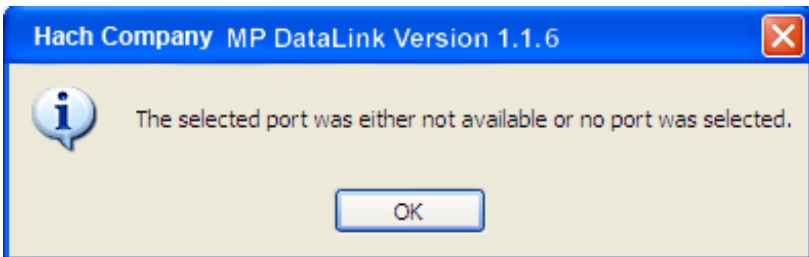
1. Go to the Edit menu and click **Preferences** to select the MP DataLink preferences. The Preferences window opens.



2. Click the **Temp. Scale** drop-down menu to select whether the temperature is displayed in Celsius or Fahrenheit.
3. Click the **Sort** drop-down menu to select how to arrange and display data. Select to sort data by one of these parameters: Record, Date, Time, Measurement, Solution, Temperature, Value or Unit.  
*Note: Select either **Asc.** or **Desc.** to arrange data in either ascending or descending order.*
4. Click the **Port** drop-down menu to indicate the serial port that will communicate with the MP Dock. It is recommended that the user select the highest port available.

*Note: MP DataLink provides a Demo mode to show how MP DataLink works when a meter is not connected to the MP-Dock.*

If **None** is selected, the following message box appears:



## MP DataLink menus

---

### 4.2.1.1 Preferences buttons

The Preferences window has three buttons:

- Click **USE DEFAULTS** to reset preferences to the original values.
- Click **SAVE** to save the current preferences and apply these to the screen.
- Click **CANCEL** to cancel the operation.

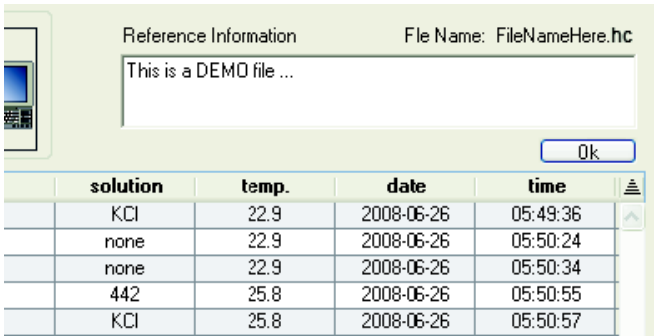
**Note:** *MP DataLink does not save user preferences in Windows Vista.*

### 4.2.2 Reference Information

When there is no data displayed in the main window, the Reference Information field and the Reference Information submenu are grayed out. To edit this field when there is data in the window, perform the steps below:

1. Go to the Edit menu and select **Reference Information**. The **OK** button becomes visible below the **Reference Information** field.
2. Edit the **Reference Information** field and click **OK**.

**Note:** *The maximum number of characters allowed in the **Reference Information** field is 100.*



## 4.3 MP Commands menu

Use the command icons (Figure 5) or the items located in the MP Commands drop-down menu to send commands to the MP series meter. MP Commands include the following:

- Download Data
- Set Date and Time
- Erase Memory
- Disconnect

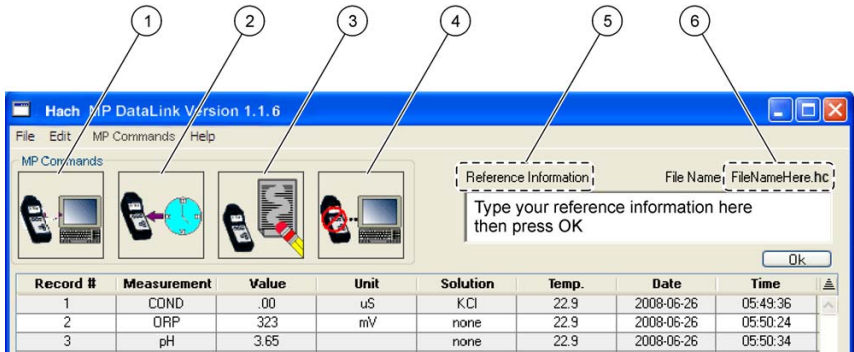


Figure 5 MP DataLink command icons and reference information

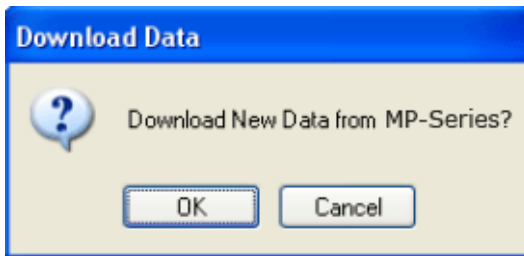
1	Download Data icon	4	Disconnect icon
2	Set Date and Time icon	5	Reference Information field
3	Erase Memory icon	6	File Name

## 4.3.1 Download Data

Use this command to download data to the MP DataLink application.

**Note:** PC On must be enabled from the MP meter to download data to the MP DataLink application (see [section 3.3 on page 27](#)).

1. Click the **DOWNLOAD DATA** icon or select **Download Data** from the MP Commands drop-down menu to download data from the MP series meter to the computer.
2. MP DataLink displays a confirmation box.



3. Click **OK**.

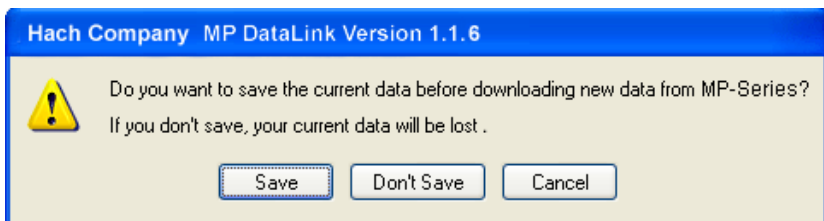
**Note:** The MP series meter shuts down automatically after 60 seconds.

If the meter shuts off before a new data download, a prompt appears and tells the user to check the MP-Dock connection and make sure that the MP series meter is in the PC On mode (see [section 3.3 on page 27](#)).

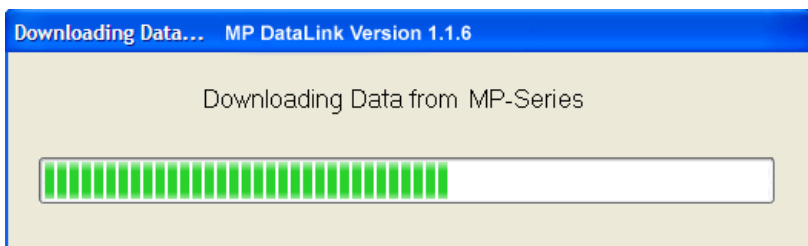
## MP DataLink menus

---

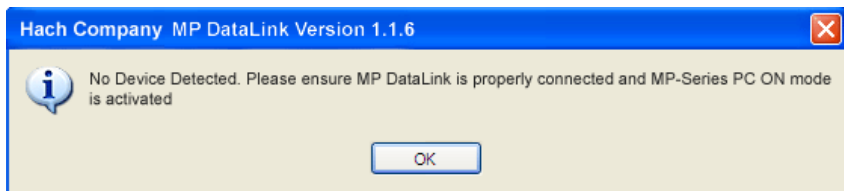
If data was downloaded earlier in the same session, and the user tries to download new data, a prompt appears and asks if the user wants to save the current data before downloading the new data. If the current data is needed, click **SAVE**.



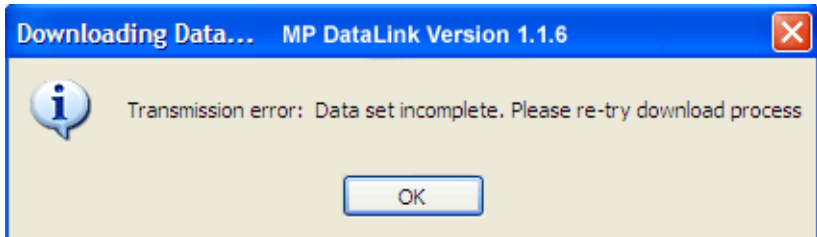
If the MP-Dock is connected and the meter is in the PC On mode, MP DataLink begins to download data from the meter. The download progress bar appears during the download.



If the MP-Dock is not connected or if the meter is not in the PC On mode, MP DataLink displays a warning message.



If the transmission is interrupted or the data is not completed within the timeout period, then MP DataLink displays a transmission error and the user should try again. When this happens, put the meter back in the PC On mode and try again.



## MP DataLink menus

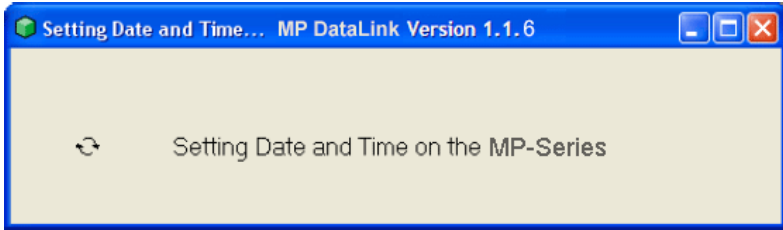
---

If there is a problem and the download process cannot begin during the timeout period, MP DataLink displays a timeout error. If this happens, put the meter back in the PC On mode and try again.

### 4.3.2 Set Date and Time

Use this command to set the date and time on the meter.

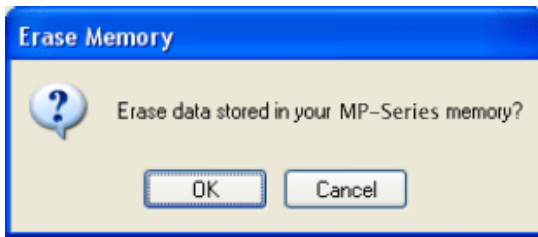
1. Verify that the computer date and time are correct to make sure the setting is accurate.
2. Click the **SET DATE AND TIME** icon (or select this task from the MP Commands menu) when the MP-Dock is connected and the meter is in the PC On mode. The date and time status bar displays. MP DataLink takes the date and time from the user's computer.



### 4.3.3 Erase Memory

Use this command to erase the data stored in the meter memory.

1. Click the **ERASE MEMORY** icon (or select this option from the MP Commands menu). When the MP-Dock is connected and the meter is in the PC On mode, a prompt asks the user to confirm the decision to erase data from the meter memory.
2. Click **OK** to confirm.



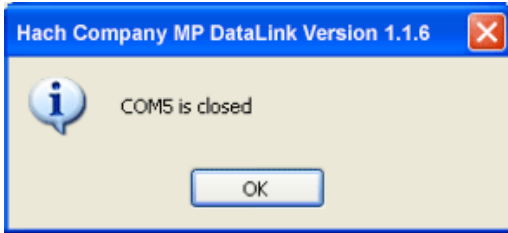
## MP DataLink menus

---

### 4.3.4 Disconnect

Use this command to close the communication port between MP DataLink and the meter.

1. Disconnect after each session to make sure that the communication port is closed.
2. Click the **DISCONNECT** icon (or select this option in the Commands menu). A message displays and indicates the number of the communication port that is closed.
3. Click **OK**.



### 4.4 Help menu

Open the MP DataLink window to provide information on version number, build date and application purpose. To go to the Hach Company web site, click on the Hach Company option.



## Section 5 Troubleshooting

---

<b>Symptom</b>	<b>Solution</b>
No device detected	Verify that the preference is set to the correct communication port.
	Verify that the meter is in the PC On mode.
Transmission error—The transmission was interrupted or the data was not downloaded within the timeout period.	Verify that the meter is in the PC On mode and download again.
Serial communications has timed out—The MP-Dock had a problem and the download process did not start within the timeout period.	Verify that the meter is in the PC On mode and download again.
Demo and None are the only communication port options in the Port Preferences drop-down list.	Make sure that the MP-Dock is securely plugged into a USB port.
	Close the MP DataLink application and re-open it.
	If there is still no communication port option, contact the IT department or System Administrator to make sure that there is a port available for use.



# Section 6 Contact Information

---

## **HACH Company World Headquarters**

P.O. Box 389  
Loveland, Colorado  
80539-0389 U.S.A.  
Tel (800) 227-HACH  
(800) 227-4224  
(U.S.A. only)  
Fax (970) 669-2932  
orders@hach.com  
www.hach.com

## **Repair Service in Latin America, the Caribbean, the Far East, Indian Subcontinent, Africa, Europe, or the Middle East:**

Hach Company World Headquarters,  
P.O. Box 389  
Loveland, Colorado,  
80539-0389 U.S.A.  
Tel +001 (970) 669-3050  
Fax +001 (970) 669-2932  
intl@hach.com

## **HACH LANGE LTD**

Unit 1, Chestnut Road  
Western Industrial Estate  
IRL-Dublin 12  
Tel. +353(0)1 46 02 5 22  
Fax +353(0)1 4 50 93 37  
info@hach-lange.ie  
www.hach-lange.ie

## **HACH LANGE FRANCE S.A.S.**

33, Rue du Ballon  
F-93165 Noisy Le Grand  
Tél. +33 (0)1 48 15 68 70  
Fax +33 (0)1 48 15 80 00  
info@hach-lange.fr  
www.hach-lange.fr

## **HACH LANGE APS**

Åkandevej 21  
DK-2700 Brønshøj  
Tel. +45 36 77 29 11  
Fax +45 36 77 49 11  
info@hach-lange.dk  
www.hach-lange.dk

## **Repair Service in the United States:**

HACH Company  
Ames Service  
100 Dayton Avenue  
Ames, Iowa 50010  
Tel (800) 227-4224  
(U.S.A. only)  
Fax (515) 232-3835

## **HACH LANGE GMBH**

Willstätterstraße 11  
D-40549 Düsseldorf  
Tel. +49 (0)2 11 52 88-320  
Fax +49 (0)2 11 52 88-210  
info@hach-lange.de  
www.hach-lange.de

## **HACH LANGE GMBH**

Hütteldorferstr. 299/Top 6  
A-1140 Wien  
Tel. +43 (0)1 9 12 16 92  
Fax +43 (0)1 9 12 16 92-99  
info@hach-lange.at  
www.hach-lange.at

## **HACH LANGE SA**

Motstraat 54  
B-2800 Mechelen  
Tél. +32 (0)15 42 35 00  
Fax +32 (0)15 41 61 20  
info@hach-lange.be  
www.hach-lange.be

## **HACH LANGE AB**

Vinthundsvägen 159A  
SE-128 62 Sköndal  
Tel. +46 (0)8 7 98 05 00  
Fax +46 (0)8 7 98 05 30  
info@hach-lange.se  
www.hach-lange.se

## **Repair Service in Canada:**

Hach Sales & Service  
Canada Ltd.  
1313 Border Street, Unit 34  
Winnipeg, Manitoba  
R3H 0X4  
Tel (800) 665-7635  
(Canada only)  
Tel (204) 632-5598  
Fax (204) 694-5134  
canada@hach.com

## **HACH LANGE LTD**

Pacific Way  
Salford  
GB-Manchester, M50 1DL  
Tel. +44 (0)161 872 14 87  
Fax +44 (0)161 848 73 24  
info@hach-lange.co.uk  
www.hach-lange.co.uk

## **DR. BRUNO LANGE AG**

Juchstrasse 1  
CH-8604 Hegnau  
Tel. +41(0)44 9 45 66 10  
Fax +41(0)44 9 45 66 76  
info@hach-lange.ch  
www.hach-lange.ch

## **DR. LANGE NEDERLAND B.V.**

Laan van Westroijen 2a  
NL-4003 AZ Tiel  
Tel. +31(0)344 63 11 30  
Fax +31(0)344 63 11 50  
info@hach-lange.nl  
www.hach-lange.nl

## **HACH LANGE S.R.L.**

Via Riccione, 14  
I-20156 Milano  
Tel. +39 02 39 23 14-1  
Fax +39 02 39 23 14-39  
info@hach-lange.it  
www.hach-lange.it

# Contact Information

---

## **HACH LANGE S.L.U.**

Edif. Arteaga Centrum  
C/Larrauri, 1C- 2ª Pl.  
E-48160 Derio/Vizcaya  
Tel. +34 94 657 33 88  
Fax +34 94 657 33 97  
info@hach-lange.es  
www.hach-lange.es

## **HACH LANGE S.R.O.**

Lešanská 2a/1176  
CZ-141 00 Praha 4  
Tel. +420 272 12 45 45  
Fax +420 272 12 45 46  
info@hach-lange.cz  
www.hach-lange.cz

## **HACH LANGE**

8, Kr. Sarafov str.  
BG-1164 Sofia  
Tel. +359 (0)2 963 44 54  
Fax +359 (0)2 866 04 47  
info@hach-lange.bg  
www.hach-lange.bg

## **ÇÁCH LANGE E.Đ.Ă.**

ĂđěŘăřđ 27  
GR-115 27 ĂđěŘă  
Őçě. +30 210 7777038  
Fax +30 210 7777976  
info@hach-lange.gr  
www.hach-lange.gr

## **HACH LANGE LDA**

Av. do Forte nº8  
Fracção M  
P-2790-072 Carnaxide  
Tel. +351 214 253 420  
Fax +351 214 253 429  
info@hach-lange.pt  
www.hach-lange.pt

## **HACH LANGE KFT.**

Hegyjalja út 7-13.  
H-1016 Budapest  
Tel. +36 (06)1 225 7783  
Fax +36 (06)1 225 7784  
info@hach-lange.hu  
www.hach-lange.hu

## **HACH LANGE SU ANALÝZ SYSTEMLERÝ LTD.ĐTÝ.**

Hilal Mah. 75. Sokak  
Arman Plaza No: 9/A  
TR-06550 Çankaya/ANKARA  
Tel. +90 (0)312 440 98 98  
Fax +90 (0)312 442 11 01  
bilgi@hach-lange.com.tr  
www.hach-lange.com.tr

## **HACH LANGE E.P.E.**

27, Avlidos str  
GR-115 27 Athens  
Tel. +30 210 7777038  
Fax +30 210 7777976  
info@hach-lange.gr  
www.hach-lange.gr

## **HACH LANGE SP.ZO.O.**

ul. Opolska 143 a  
PL-52-013 Wroc³aw  
Tel. +48 (0)71 342 10-83  
Fax +48 (0)71 342 10-79  
info@hach-lange.pl  
www.hach-lange.pl

## **HACH LANGE S.R.L.**

Str. Leonida, nr. 13  
Sector 2  
RO-020555 Bucuresti  
Tel. +40 (0) 21 201 92 43  
Fax +40 (0) 21 201 92 43  
info@hach-lange.ro  
www.hach-lange.ro

## **HACH LANGE D.O.O.**

Fajfarjeva 15  
SI-1230 Domžale  
Tel. +386 (0)59 051 000  
Fax +386 (0)59 051 010  
info@hach-lange.si  
www.hach-lange.si

## Section 7 Limited Warranty

---

Hach Company warrants its products to the original purchaser against any defects that are due to faulty material or workmanship for a period of two years from date of shipment unless otherwise noted in the product manual.

In the event that a defect is discovered during the warranty period, Hach Company agrees that, at its option, it will repair or replace the defective product or refund the purchase price excluding original shipping and handling charges. Any product repaired or replaced under this warranty will be warranted only for the remainder of the original product warranty period.

This warranty does not apply to consumable products such as chemical reagents; or consumable components of a product, such as, but not limited to, lamps and tubing.

Contact Hach Company or your distributor to initiate warranty support. Products may not be returned without authorization from Hach Company.

### Limitations

This warranty does not cover:

- Damage caused by acts of God, natural disaster, labor unrest, acts of war (declared or undeclared), terrorism, civil strife or acts of any governmental jurisdiction
- Damage caused by misuse, neglect, accident or improper application or installation
- Damage caused by any repair or attempted repair not authorized by Hach Company
- Any product not used in accordance with the instructions furnished by Hach Company
- Freight charges to return merchandise to Hach Company
- Freight charges on expedited or express shipment of warranted parts or product
- Travel fees associated with on-site warranty repair

This warranty contains the sole express warranty made by Hach Company in connection with its products. All implied warranties, including without limitation, the warranties of merchantability and fitness for a particular purpose, are expressly disclaimed.

Some states within the United States do not allow the disclaimer of implied warranties and if this is true in your state the above limitation may not apply to you. This warranty gives you specific rights, and you may also have other rights that vary from state to state.

This warranty constitutes the final, complete, and exclusive statement of warranty terms and no person is authorized to make any other warranties or representations on behalf of Hach Company.

### Limitation of Remedies

The remedies of repair, replacement or refund of purchase price as stated above are the exclusive remedies for the breach of this warranty. On the basis of strict liability or under any other legal theory, in no event shall Hach Company be liable for any incidental or consequential damages of any kind for breach of warranty or negligence.



## C

commands	
Clear Data .....	31
Load .....	29
Print .....	33
Quit .....	34
Save .....	31
Save As .....	32
commands sent to meter .....	28
communication between	
components .....	27
connect MP-Dock to USB port .....	25
connections between MP	
meter and MP-Dock .....	6
contact information .....	43
CSV data format for spreadsheet	
applications .....	32

## D

display data preference .....	35
download data .....	37

## E

enable communication .....	27
enable data transfer .....	25
erase memory .....	39

## F

features .....	6
----------------	---

## G

general information .....	5
---------------------------	---

## H

Help menu .....	40
how data is transferred .....	5

## I

install MP DataLink .....	7
---------------------------	---

## L

launch MP DataLink software .....	25
-----------------------------------	----

## M

Mac OS X install MP-Dock	
device driver .....	19
Mac OS X installation .....	15

install executable	
and support files .....	16
menus .....	29
Edit .....	34
File .....	29
Help .....	40
MP Commands .....	36
MP commands .....	36
Disconnect .....	40
Download Data .....	37
Erase Memory .....	39
Set Date and Time .....	39
MP DataLink commands .....	28
MP DataLink installation .....	7
Mac OS X installation .....	15
Windows installation .....	7
MP DataLink menus .....	29
MP meter and MP-Dock	
configuration .....	6
MP meter communication .....	27
MP-Dock features .....	6

## P

port preference .....	26
power on the meter .....	27
preference for display data .....	35

## R

reference information .....	36
-----------------------------	----

## S

safety information .....	5
send commands to meter .....	28
send commands to MP meter .....	36
set date and time .....	39
software	
installation .....	7
launch .....	25
specifications .....	5
spreadsheet applications .....	32
system requirements .....	6

## T

troubleshooting .....	41
-----------------------	----

## Index

---

turn on the meter ..... 27

### U

uninstall previous versions ..... 7

use of hazard information ..... 5

### W

warranty ..... 45

Windows installation .....7

install executable

and support files ..... 7

install USB port driver ..... 14

install USB serial converter ..... 10

without internet connection ..... 15