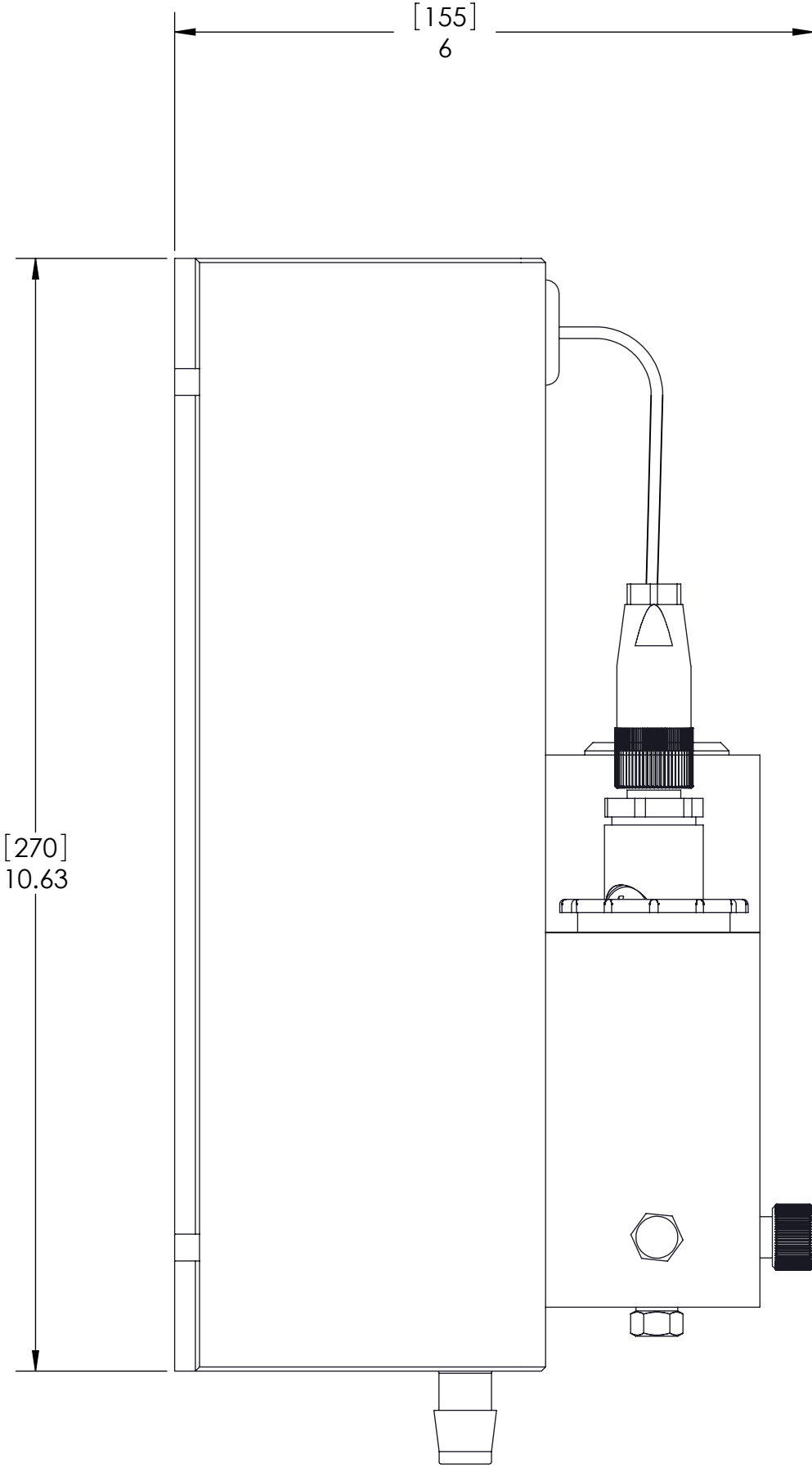
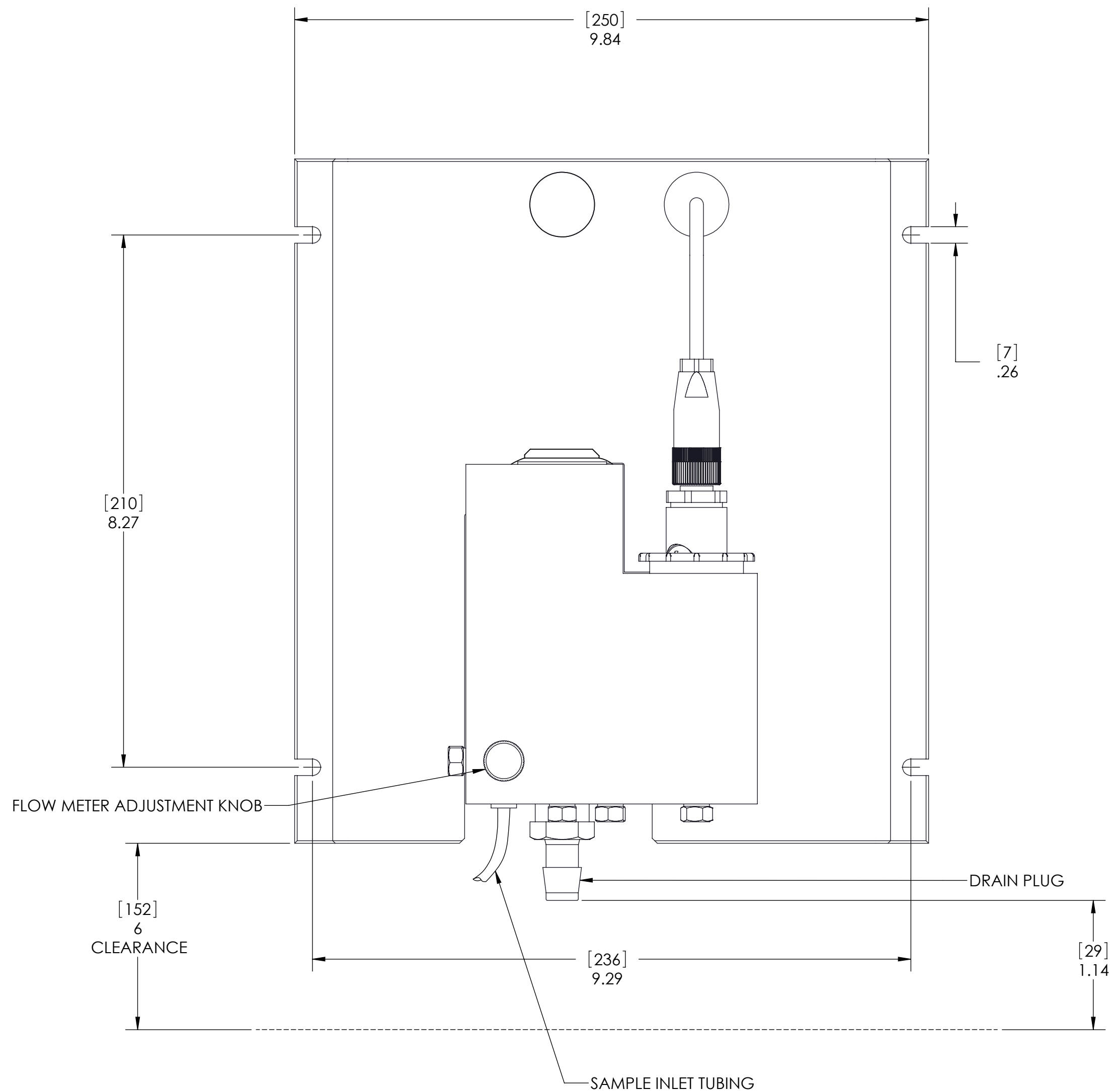


REVISION		
REV	DESCRIPTION	APPROVED
A	Production Release	Venkate Raman

NOTES:
1. ALL DIMENSIONS ARE IN INCHES [MILLIMETERS].

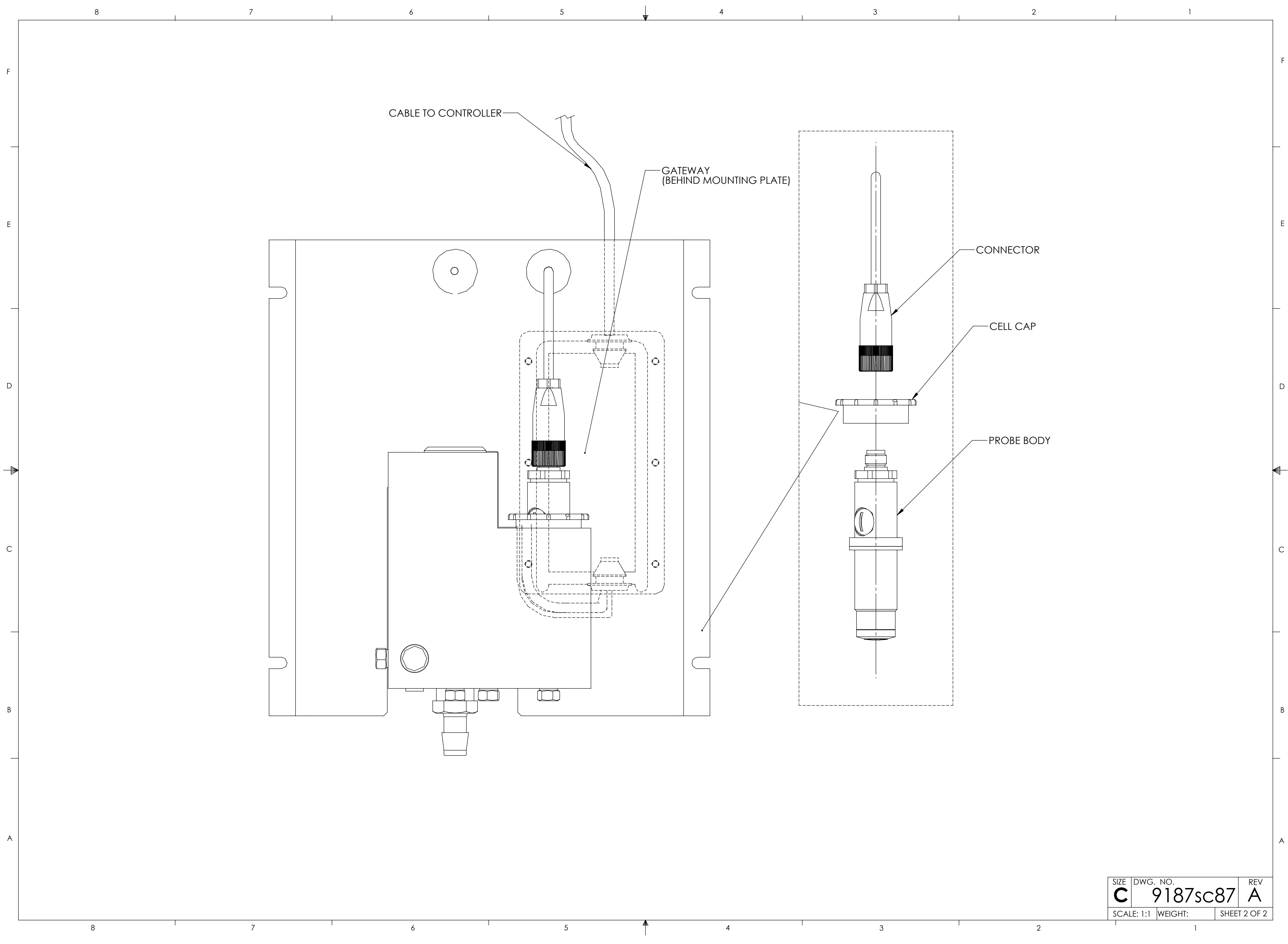


GENERAL INFORMATION:

- 9187sc ANALYZER IS DESIGNED FOR WALL MOUNTING, PANEL OR STAND.
- MEASUREMENT RANGE IS 0-2 PPM [0-2 mg/L] CHLORINE DIOXIDE
- DETECTION LIMIT IS 10 PPB (0.01 mg/L)
- MINIMUM INLET PRESSURE TO INSTRUMENT TO BE 0.1 - 2 bar (1.4 - 28 psi)
- MINIMUM FLOW RATE TO BE 14 L/hr
- POWER CONSUMPTION IS 12V, 1.5 WATTS.
- WEIGHT OF ANALYZER IS 6.5 Kg (14.3 lb).

NOTICE-HACH COMPANY CLAIMS PROPRIETARY RIGHTS IN THE INFORMATION DISCLOSED ON THIS DRAWING. IT IS ISSUED IN CONFIDENCE FOR ENGINEERING INFORMATION ONLY AND MAY NOT, IN WHOLE OR IN PART, BE USED TO MANUFACTURE ANYTHING, WHETHER OR NOT SHOWN HEREON, REPRODUCED OR DISCLOSED TO ANYONE WITHOUT DIRECT PERMISSION FROM HACH COMPANY.

MATERIAL	UNLESS OTHERWISE SPECIFIED: DIMENSIONS ARE IN INCHES TOLERANCES: .X = ± .XX = ± .XXX = ± ANGLES = ±	NAME	DATE		HACH COMPANY 5600 LINDBERGH DR. LOVELAND, CO. 80539
	INTERPRET GEOMETRIC TOLERANCING PER: ANSI Y14.5M 1994	DRAWN	TCS		
	DO NOT SCALE DRAWING	ENGINEER	TCS	11/09/06	
THIRD ANGLE PROJECTION				TITLE: TRANSMITTAL, 9187sc CHLORINE DIOXIDE ANALYZER	
		SIZE DWG. NO.		REV	
		C 9187sc87		A	
		SCALE: 1:1		WEIGHT: SHEET 1 OF 2	



SIZE	DWG. NO.	REV
C	9187sc87	A
SCALE: 1:1	WEIGHT:	SHEET 2 OF 2